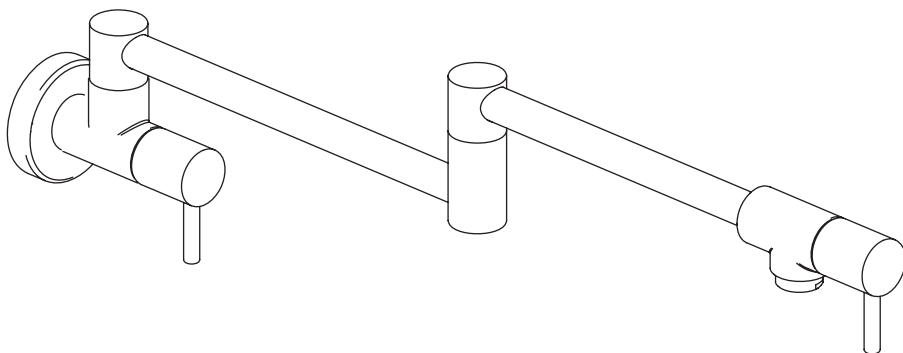


INSTALLATION INSTRUCTIONS

BUDDY WALL MOUNT POT FILLER | CB054

progetto
DESIGN COLLECTION



IMPORTANT!

Please read these instructions **prior** to installation

Distributed by:

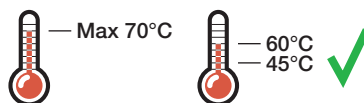
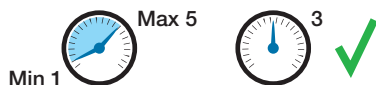
Plumbline

T 04 568 9898 E sales@plumblin.co.nz
www.plumblin.co.nz

RECOMMENDATIONS FOR INSTALLATION



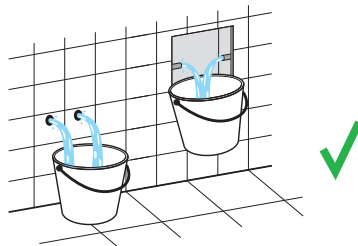
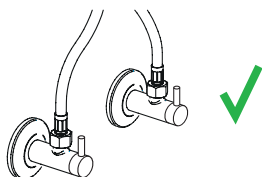
ATTENTION: Failure to follow these recommendations may void the warranty. It is recommended that a qualified, licensed tradesperson install this product.



Water Pressure: 3 bar

Product performance cannot be guaranteed if pressure is less than 1 bar. Above 5 bar a pressure regulator must be installed. Failure to do so voids the product warranty.

Water Temperature: 45°-65°C



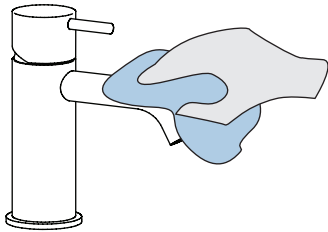
Stop Taps/Filters

Angle valves and/or filters are recommended to prevent impurities and debris entering the mixer.

Pre-Flush

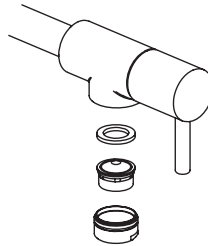
Always flush out the pipework before connecting any tapware. Failure to do so voids the product warranty.

CLEANING & MAINTENANCE



Cleaning

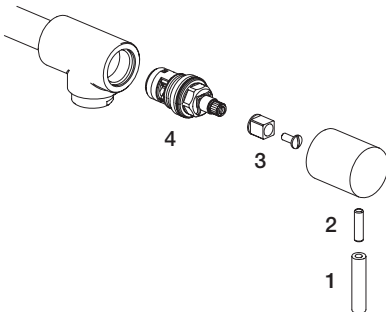
Clean with warm soapy water and a smooth cloth. Avoid abrasive sponges or detergents as these will damage the finish.



Aerator Maintenance

Remove the aerator carefully with a spanner. Immerse for half a day in water-vinegar solution (80-20%).

Wash, then reassemble.



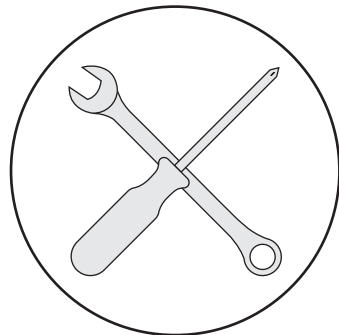
Cartridge Replacement

Before you start, turn off the water supply to the mixer.

1. Unscrew the lever part of the handle
2. Unscrew the grub screw
3. Remove the screw and insert
4. Remove the cartridge

Re-assemble in reverse order

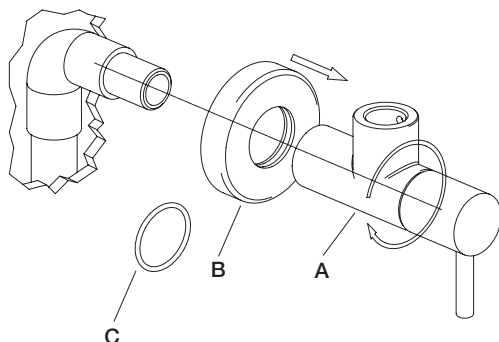
⚠ Max tightening torque on locking nut: 10-12 Nm



Warranty Information

For full details about our warranty visit plumbline.co.nz/warranty-information

- 1 Slide on the flange (B) and the o-ring (C) on the faucet body (A); screw the faucet body (A) onto the wall mounted water outlet; if necessary add some Teflon tape to ensure proper sealing.



- 2 Install the articulated arm (D) on the faucet body (A) making sure to not damage the sealing o-rings (E). Before installing the rear locking screw (F) to fasten the assembly, make sure the guide ring (G) is correctly fitted on the joint so that the screw is properly inserted in the opening.

