

INSTALLATION INSTRUCTIONS

BATH RIM SHOWER SOCKET WITH DRAINING SYSTEM | PD467

SILFRA

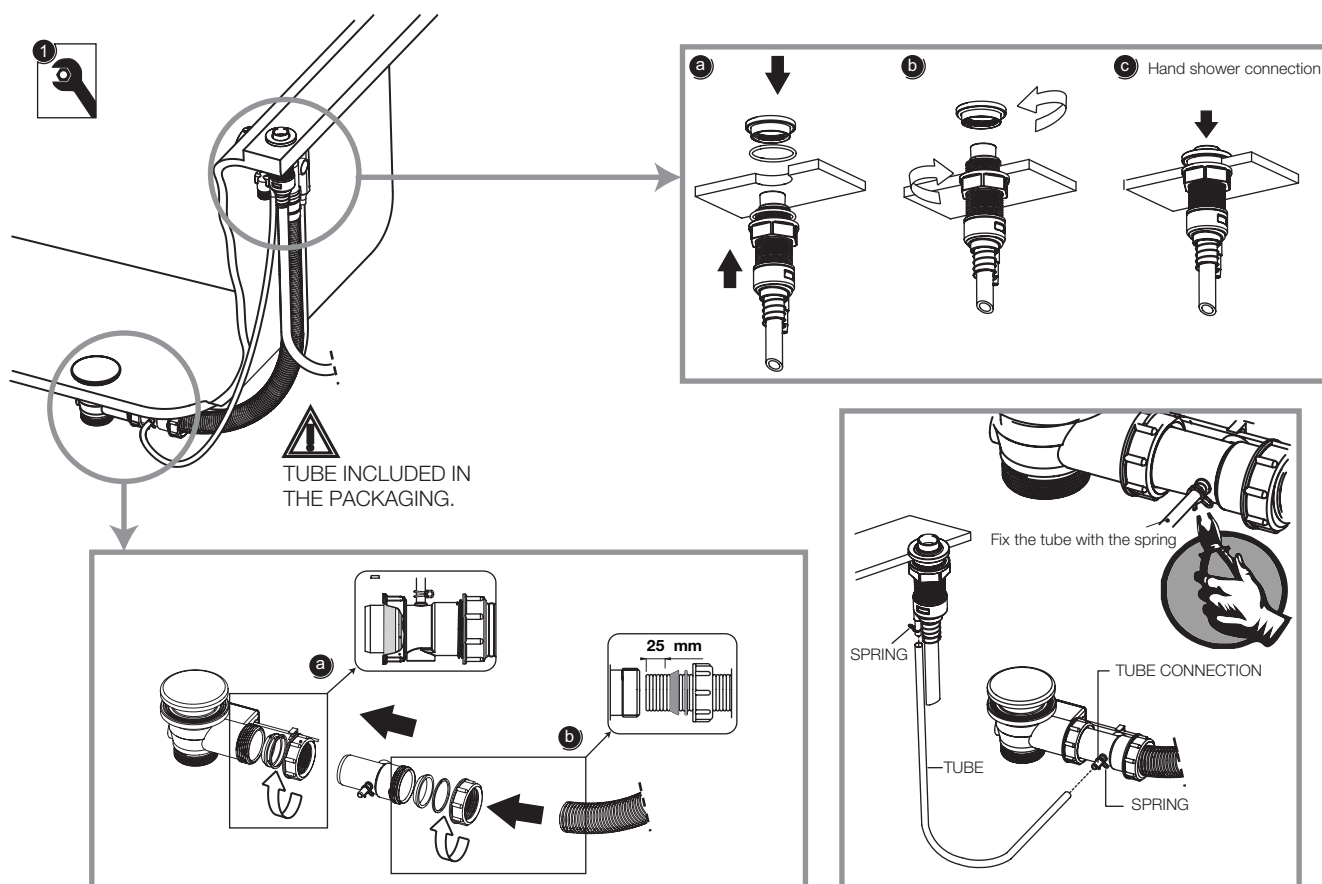
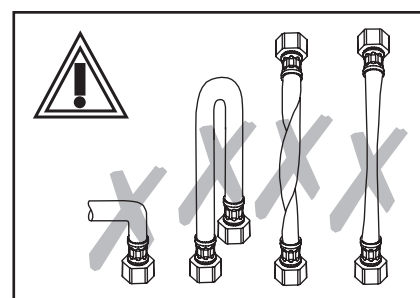
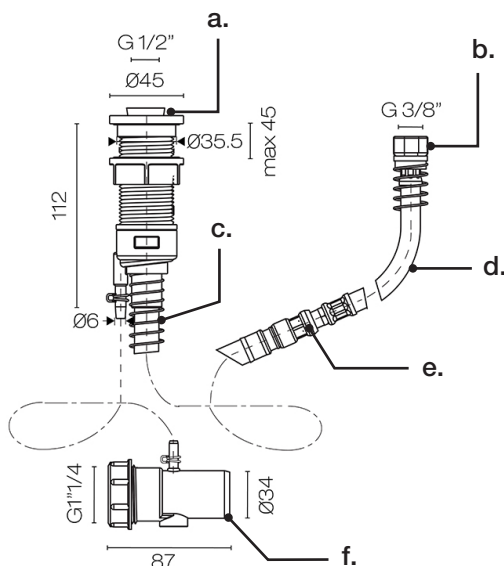


IMPORTANT!

Please read these instructions **prior** to installation

Parts

- a. Hand shower connection
- b. Feeding connection
- c. Flexible hose B - 150cm
- d. Flexible hose A - 100cm
- e. Connection flexible hoses A and B
- f. Kit Tub Holder



Distributed by:

Plumblin

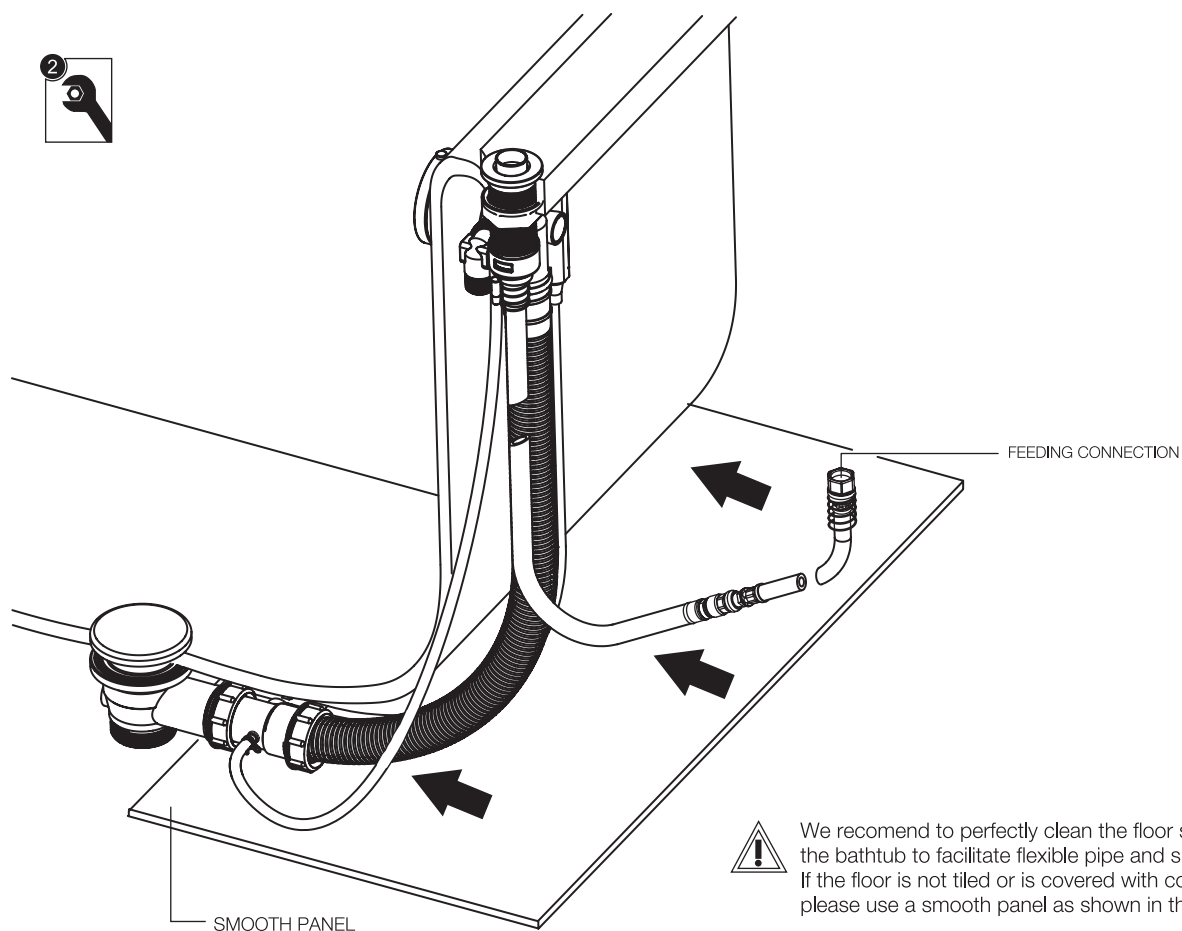
T 04 568 9898 E sales@plumblin.co.nz www.plumblin.co.nz

AT9518A00 - VERS. 4 - 10 / 2012

INSTALLATION INSTRUCTIONS

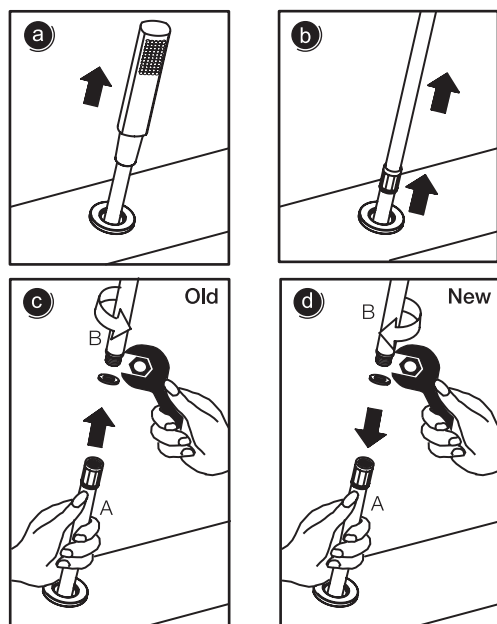
BATH RIM SHOWER SOCKET WITH DRAINING SYSTEM | PD467

SILFRA

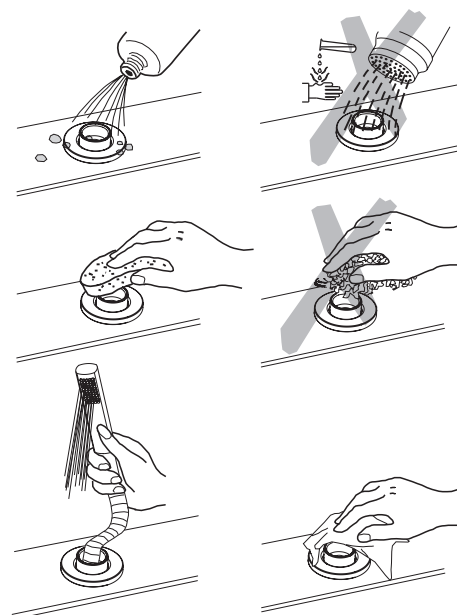


Maintenance

FLEXIBLE REPLACEMENT



Cleaning



Distributed by:

Plumblin

T 04 568 9898 E sales@plumblin.co.nz www.plumblin.co.nz

AT9518A00 - VERS. 4 - 10 / 2012