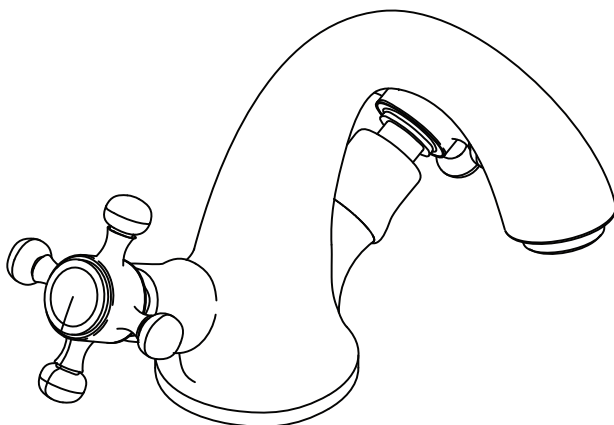


INSTALLATION INSTRUCTIONS

CONSORT
EMPIRE



IMPORTANT!

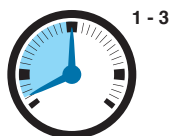
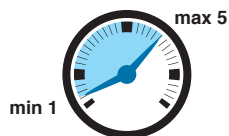
Please read these instructions **prior** to installation

Distributed by:

Plumbline

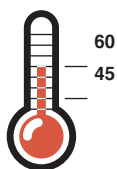
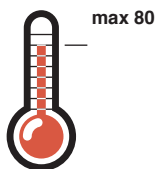
T 04 568 9898 E sales@plumblin.co.nz
www.plumblin.co.nz

RECOMMENDATIONS FOR INSTALLATION



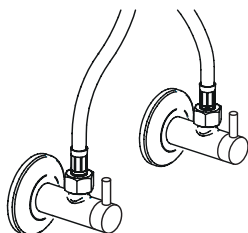
Water Pressure

1 - 3 bar



Water Temperature

45° - 65°C



Stop Taps

Angle valves are recommended



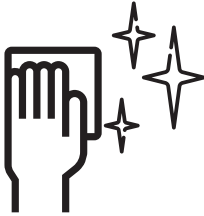
Pre-Flush

Always flush out the pipework before connecting any tapware.



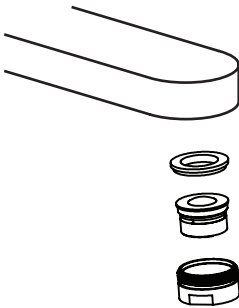
ATTENTION

Failure to do so will void the warranty.



Cleaning

Clean with warm soapy water and a smooth cloth. Avoid abrasive sponges or detergents as these will damage the finish.



Aerator Maintenance

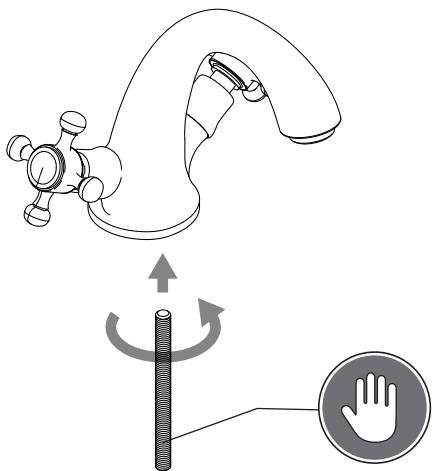
Unscrew the aerator with 22mm spanner

immerse for half a day in water-vinegar solution (80-20%)

Wash, then reassemble

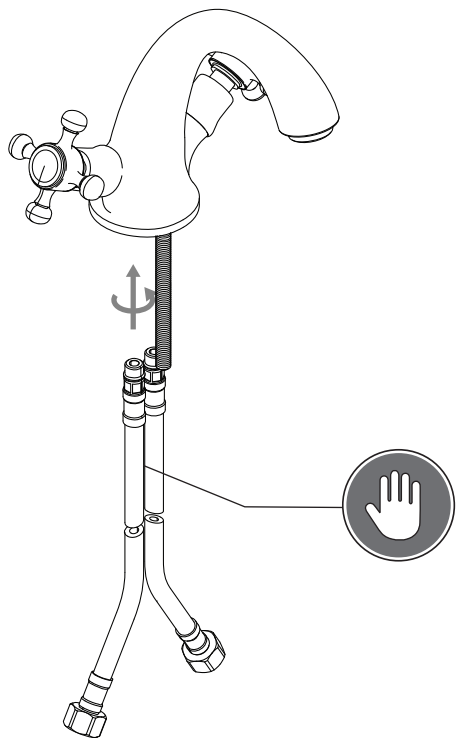
INSTALLATION INSTRUCTIONS

BASIN MIXER | CON08 - EMP08



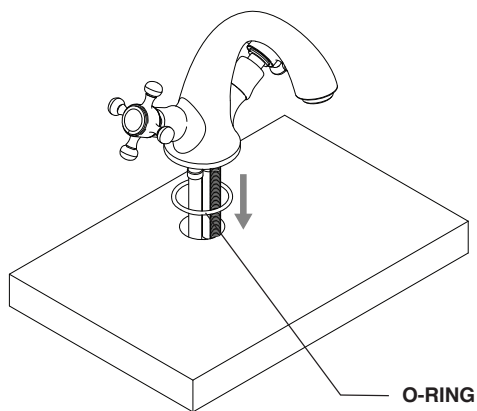
1

Screw the threaded rod into the holes at the bottom of the mixer body.



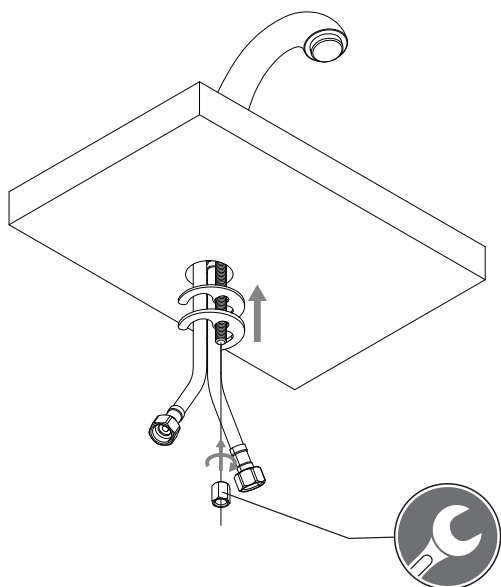
2

Screw the flexible hoses into the water inlet at the bottom of the mixer body



3

Slide the o-ring over the mixer assembly then insert the whole block into the basin hole.



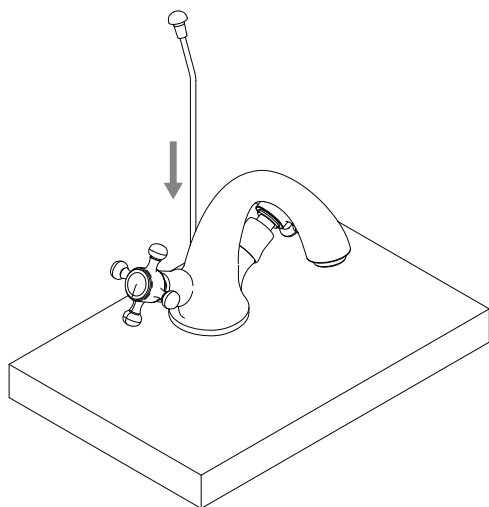
4

While holding the mixer in place, slide in the rubber gasket and the metal washer of the fixing kit. Secondly screw the nut on the threaded rod and fix them using a wrench.



ATTENTION

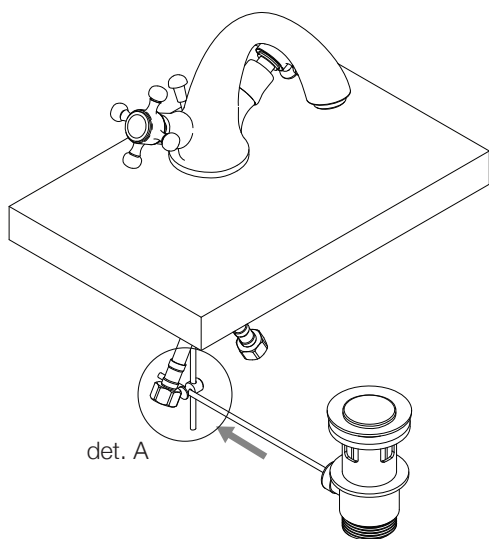
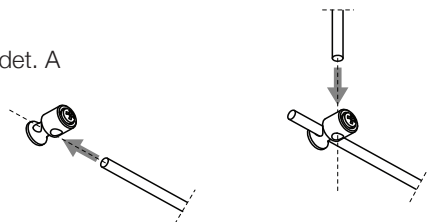
Two operators are required to avoid damages.



5

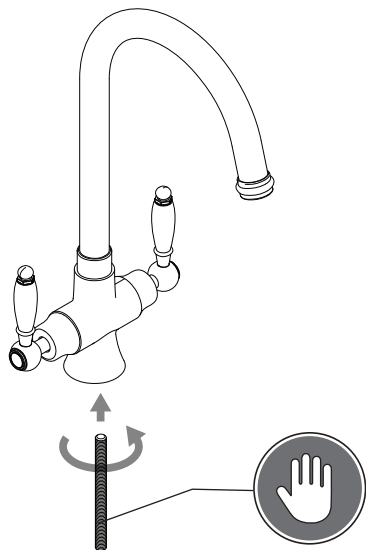
Insert the rod into the tap body and then connect it to the pop-waste connection.

det. A



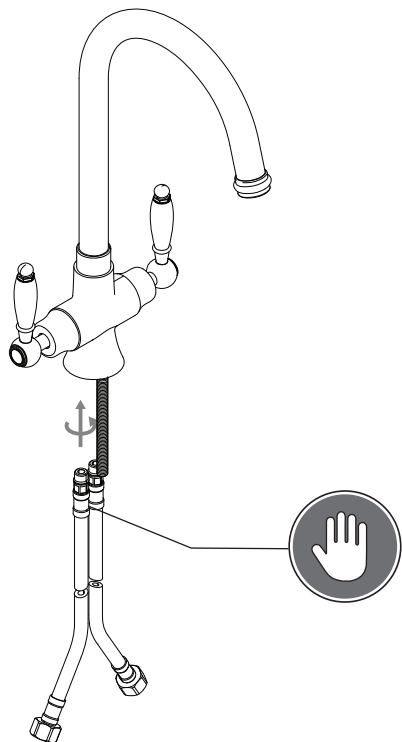
INSTALLATION INSTRUCTIONS

KITCHEN MIXER | COL13LTS



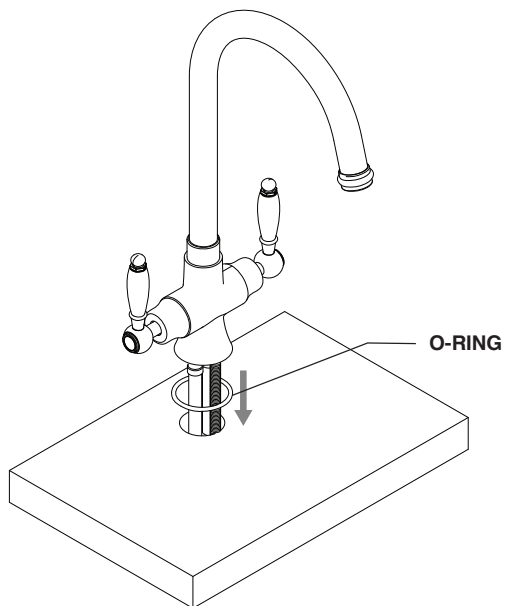
1

Screw the threaded rod into the holes at the bottom of the mixer body.



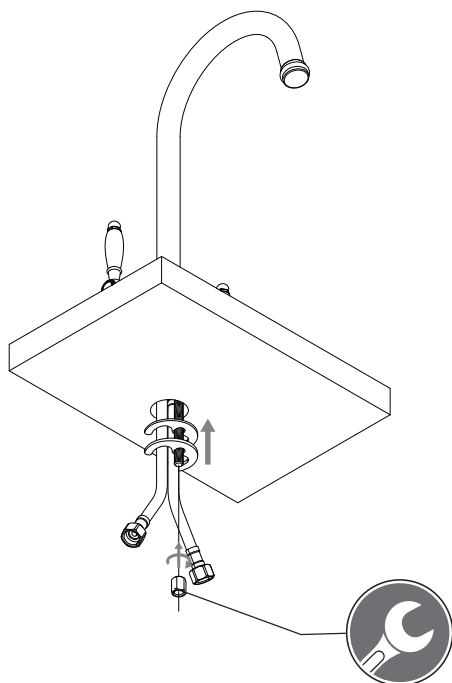
2

Screw the flexible hoses into the water inlet at the bottom of the mixer body



3

Slide the o-ring over the mixer assembly then insert the whole block into the basin hole.



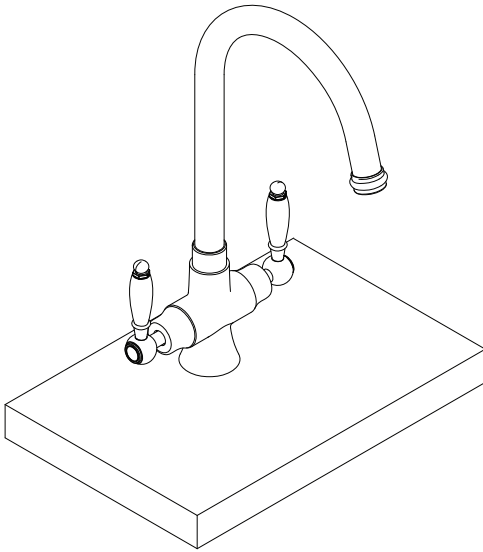
4

While holding the mixer in place, slide in the rubber gasket and the metal washer of the fixing kit. Secondly screw the nut on the threaded rod and fix them using a wrench.



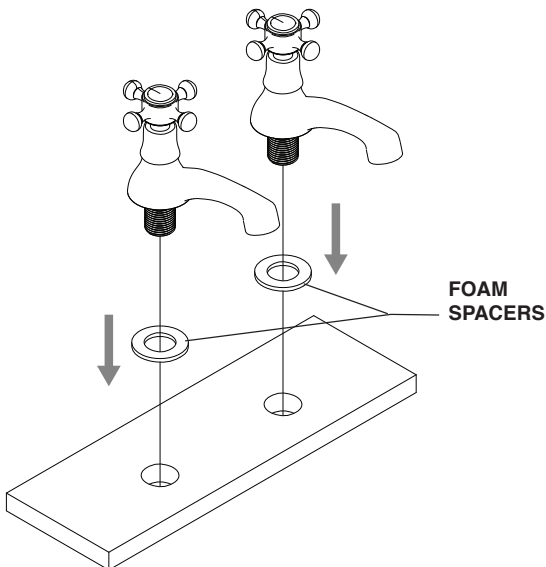
ATTENTION

Two operators are required to avoid damages.



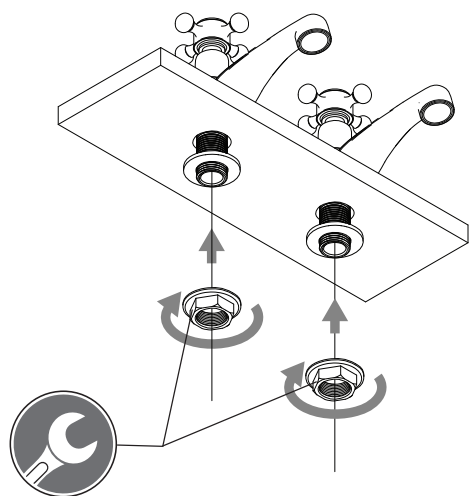
INSTALLATION INSTRUCTIONS

BASIN MIXER | EMP01



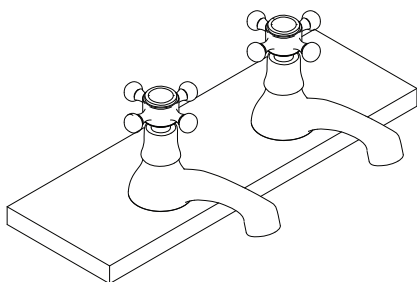
1

Insert the tap bodies into the basin holes with the provided foam spacers.



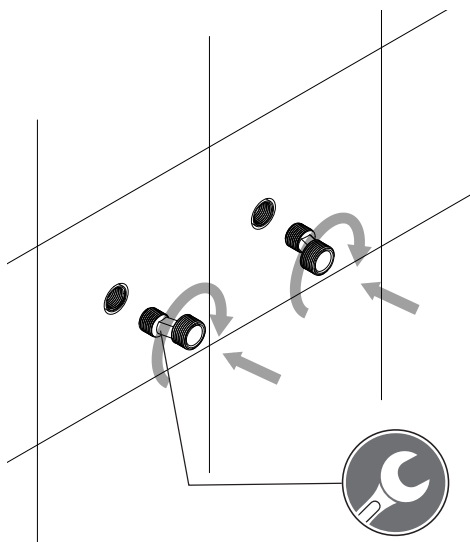
2

Insert the two lower foam spacers, then fix the taps using the two plastic nuts and tight them with a wrench.



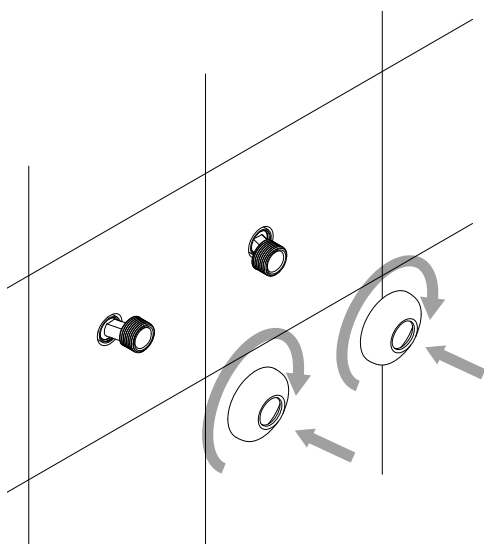
INSTALLATION INSTRUCTIONS

BATHTUB MIXER WITH SHOWER | CON05WM - EMP05WM



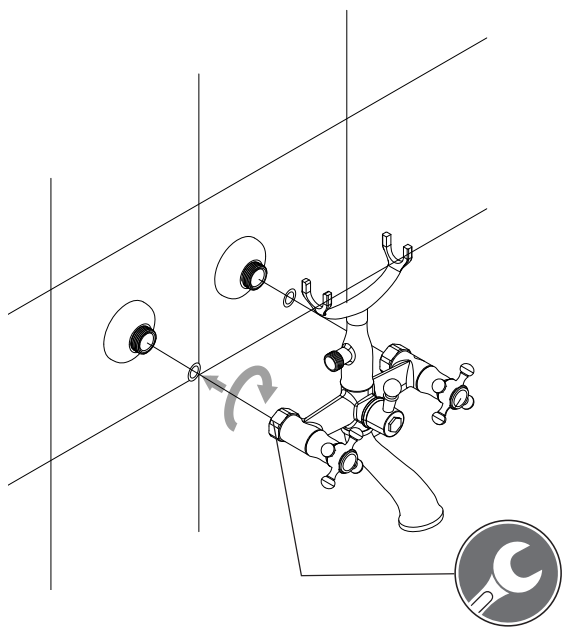
1

Screw the eccentric connections to the wall pipes (1/2" thread) and lock them using a wrench.



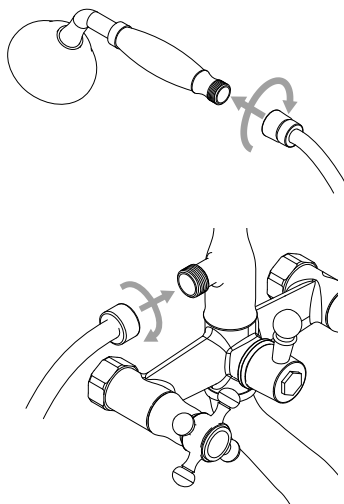
2

Screw the rosaces to the eccentric connections.



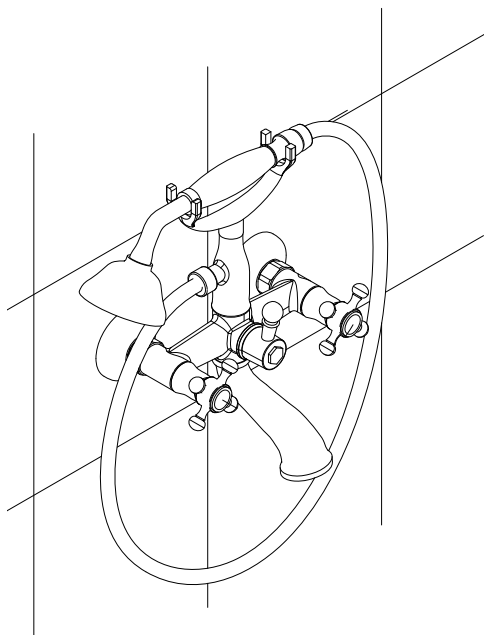
3

Fix the tap to the connections screwing the nuts to the side with 3/4" thread inserting the washer, lock the nuts using a wrench.



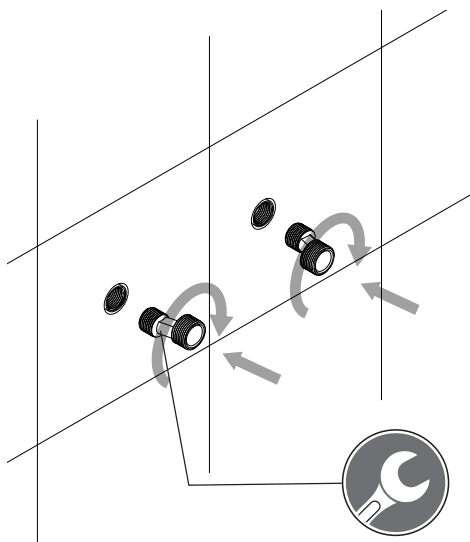
4

Connect the flexible hose to the hand shower and to the diverter outlet on the upper rest.



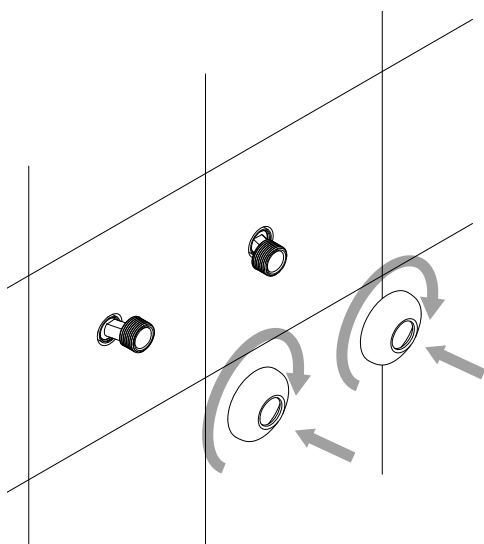
INSTALLATION INSTRUCTIONS

BATHTUB MIXER WITH SHOWER | CON06WM - EMP06WM



1

Screw the eccentric connections to the wall pipes (1/2" thread) and lock them using a wrench.

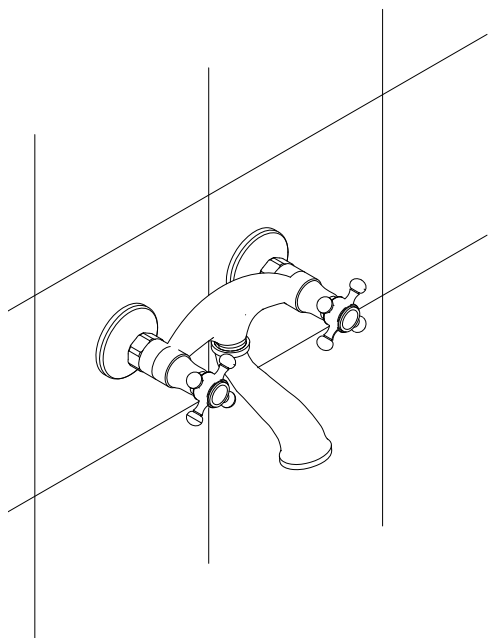
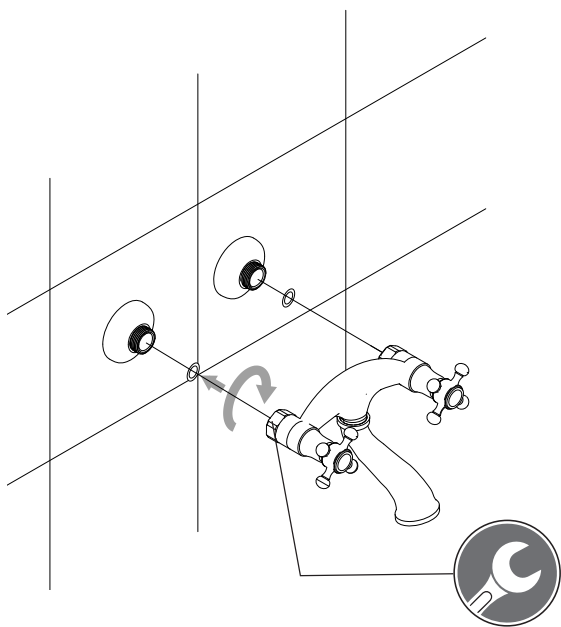


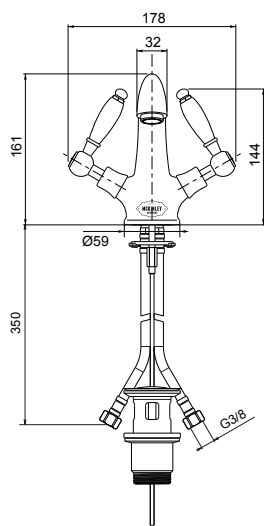
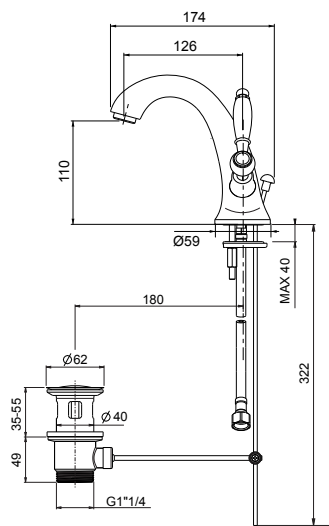
2

Screw the rosaces to the eccentric connections.

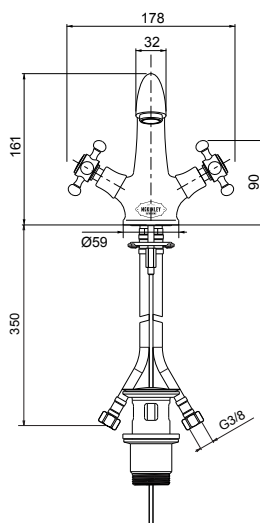
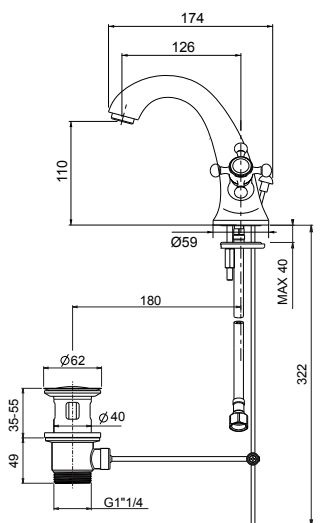
3

Fix the tap to the connections screwing the nuts to the side with 3/4" thread inserting the washer, lock the nuts using a wrench.

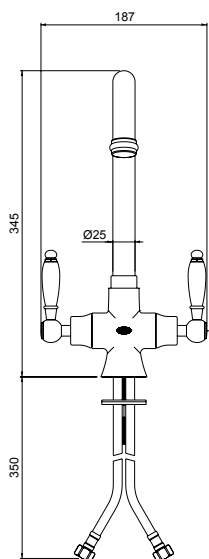
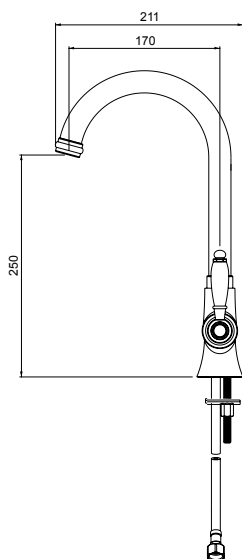




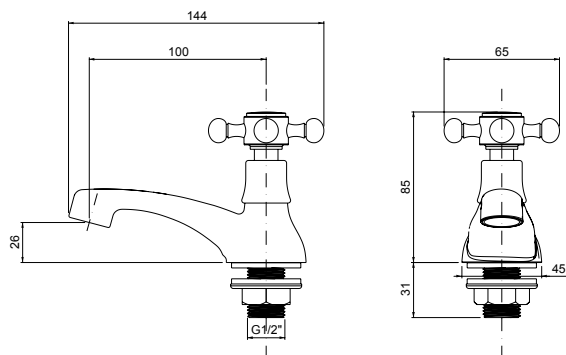
CON08



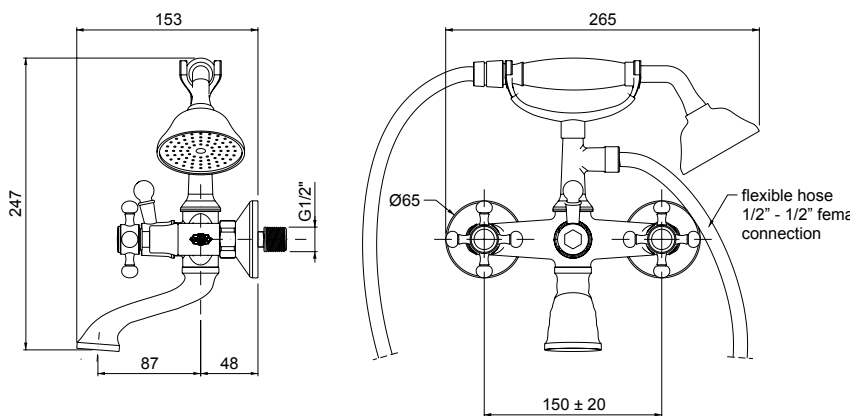
EMP08



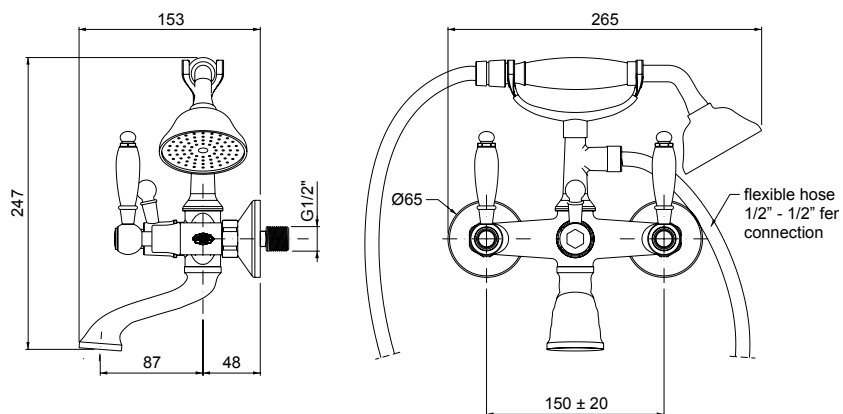
COL13LTS



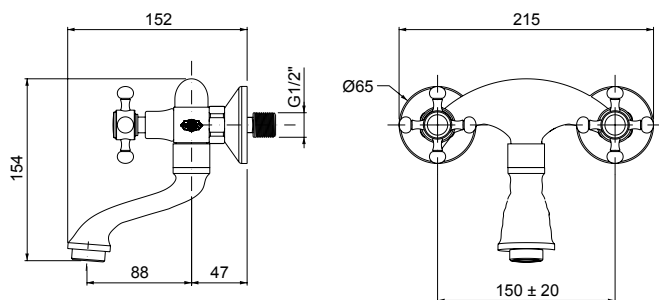
EMP01



EMP05WM



CON05WM



EMP06WM