

INSTALLATION INSTRUCTIONS

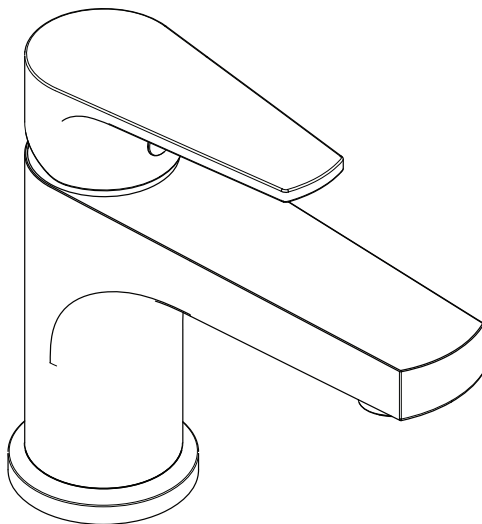
progetto

ECO STYLE BASIN MIXER | ES1560N

ECO STYLE SHOWER MIXER | ES2083N

ECO STYLE DIVERTER MIXER | ES2266N

ECO STYLE KITCHEN MIXER | ES3010N



IMPORTANT!

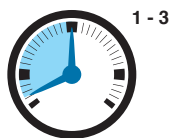
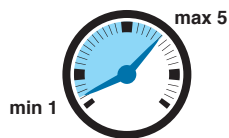
Please read these instructions **prior** to installation

Distributed by:

Plumbline

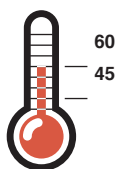
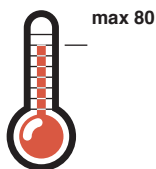
T 04 568 9898 E sales@plumblin.co.nz
www.plumblin.co.nz

RECOMMENDATIONS FOR INSTALLATION



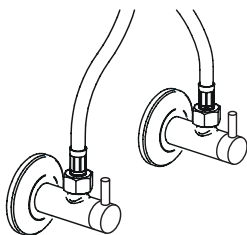
Water Pressure

1 - 3 bar



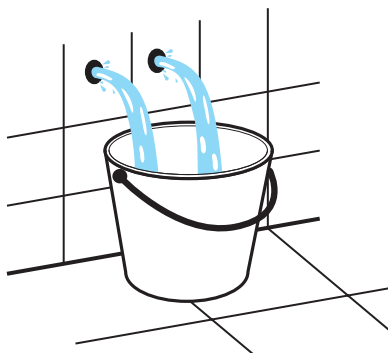
Water Temperature

45° - 65°C



Stop Taps

Angle valves are recommended



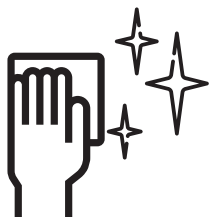
Pre-Flush

Always flush out the pipework before connecting any tapware.



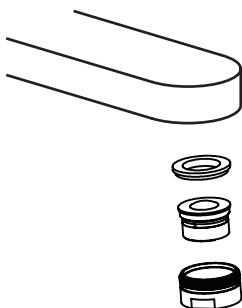
ATTENTION

Failure to do so will void the warranty.



Cleaning

Clean with warm soapy water and a smooth cloth. Avoid abrasive sponges or detergents as these will damage the finish.



Aerator Maintenance

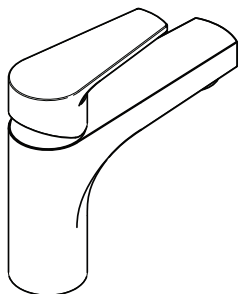
Unscrew the aerator with 22mm spanner

Immerse for half a day in water-vinegar solution (80-20%)

Wash, then reassemble

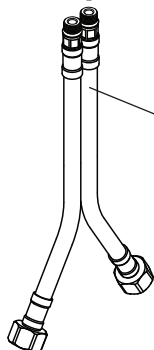
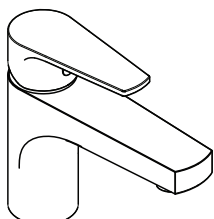
INSTALLATION INSTRUCTIONS

ECO STYLE BASIN MIXER | ES1560N



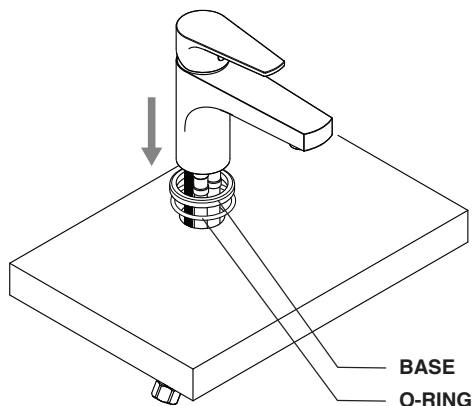
1

Screw the threaded rods into the holes at the bottom of the mixer body.



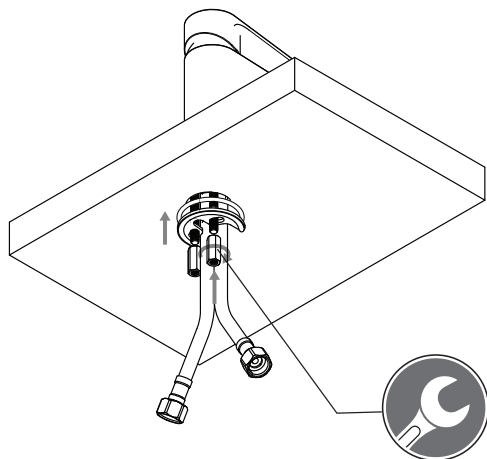
2

Screw the flexible hoses into the water inlet at the bottom of the mixer body



3

Slide the base and the o-ring over the mixer assembly then insert the whole block into the basin hole.



4

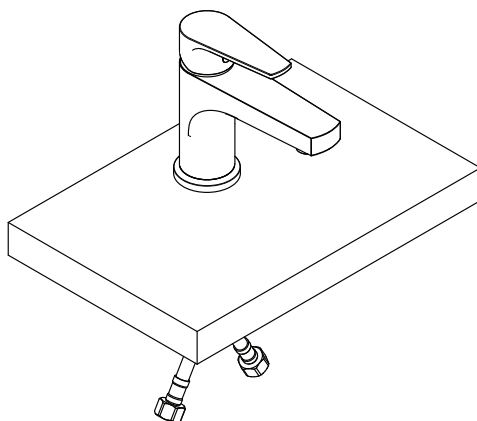
While holding the mixer in place, slide in the rubber gasket and the metal washer of the fixing kit.

Secondly screw the two nuts on the threaded rods and fix them using a wrench.



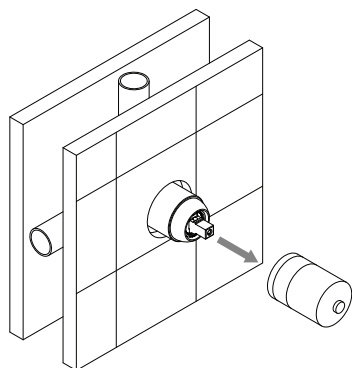
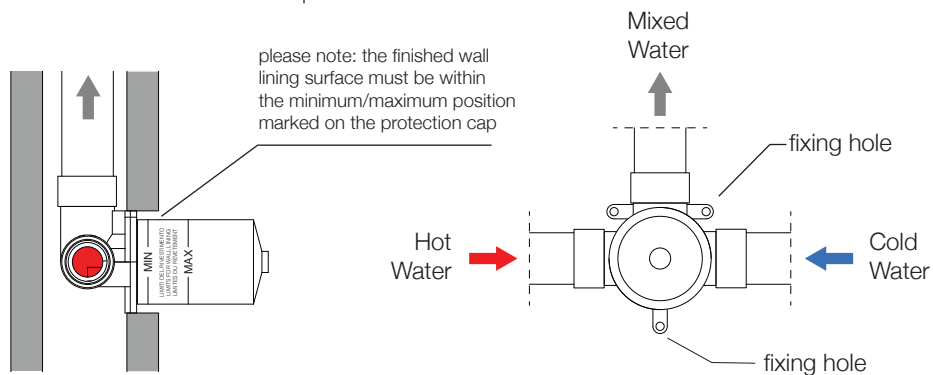
ATTENTION

Two operators are required to avoid damages.



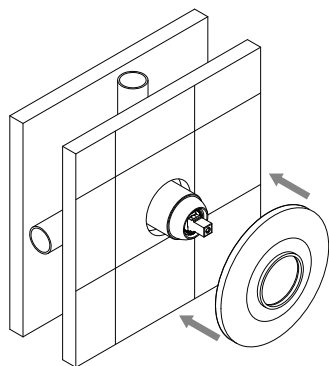
INSTALLATION INSTRUCTIONS

ECO STYLE SHOWER MIXER | ES2083N



1

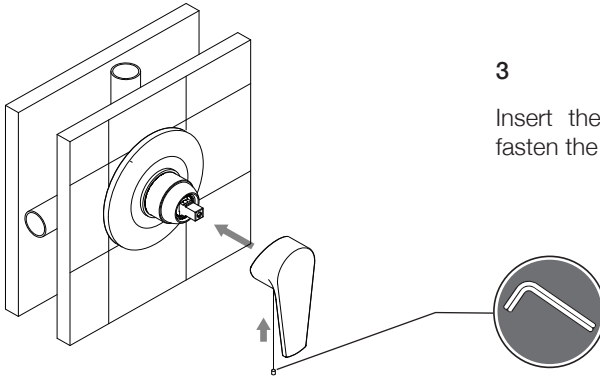
Pull out the protection cap.



2

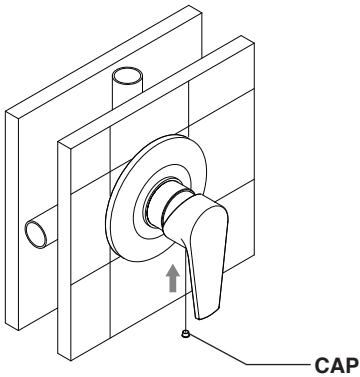
Slide the plate over the body and to prevent any rotation, fix it to the wall using some glue.





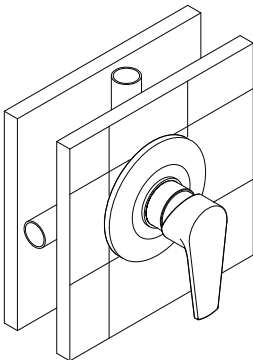
3

Insert the handle on the cartridge, then fasten the screw using the 2.5mm hex key.



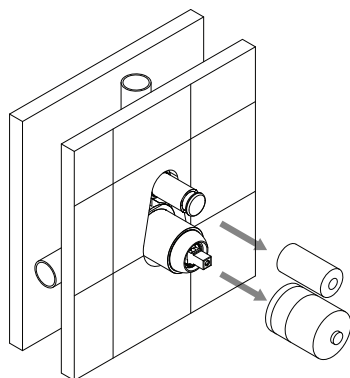
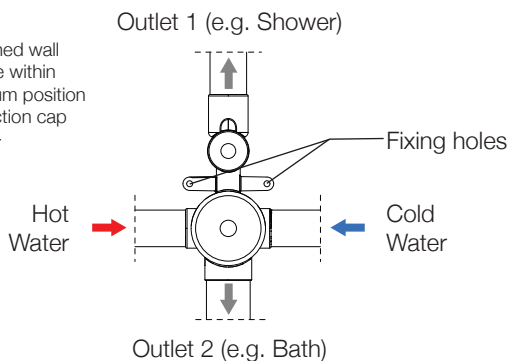
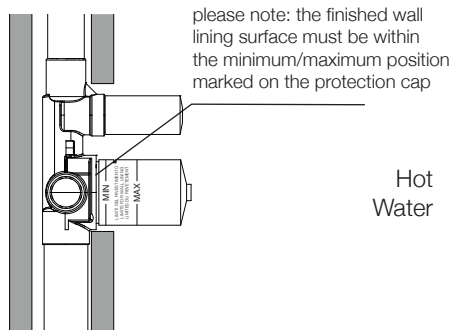
4

Insert the chrome cap into the handle hole.



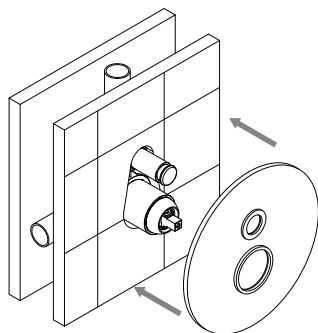
INSTALLATION INSTRUCTIONS

ECO STYLE DIVERTER MIXER | ES2266N



1

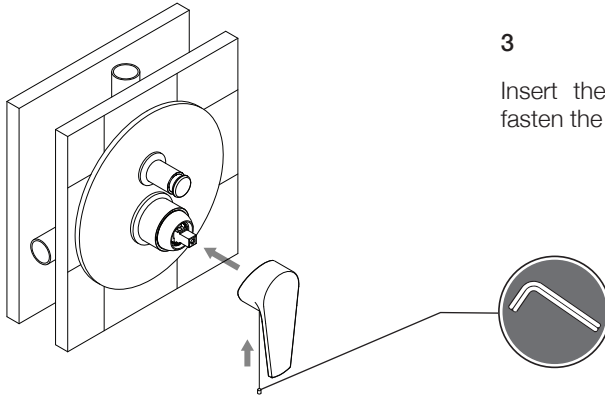
Pull out the protection cap.



2

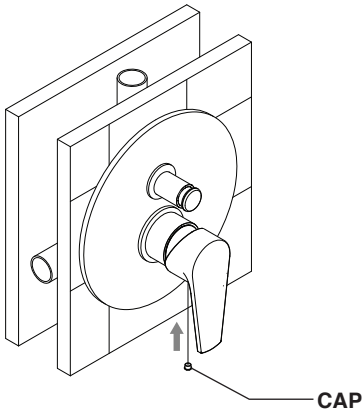
Slide the plate over the body and to prevent any rotation, fix it to the wall using some glue.





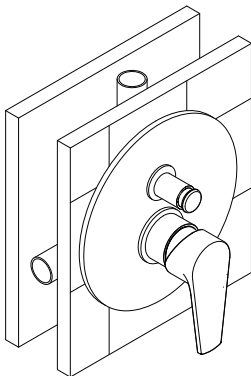
3

Insert the handle on the cartridge, then fasten the grub screw using the 2.5 hex key.



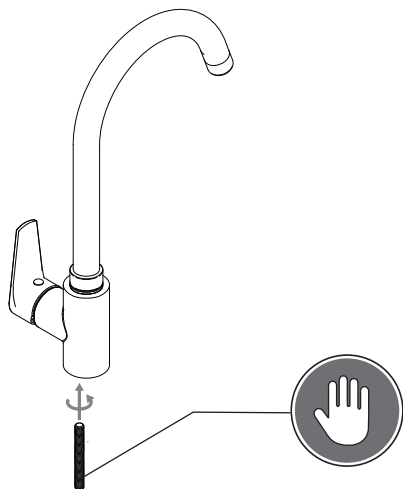
4

Insert the chrome cap into the handle hole.



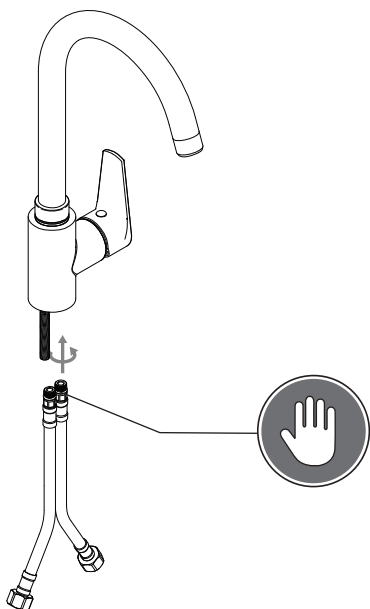
INSTALLATION INSTRUCTIONS

ECO STYLE KITCHEN MIXER | ES3010N



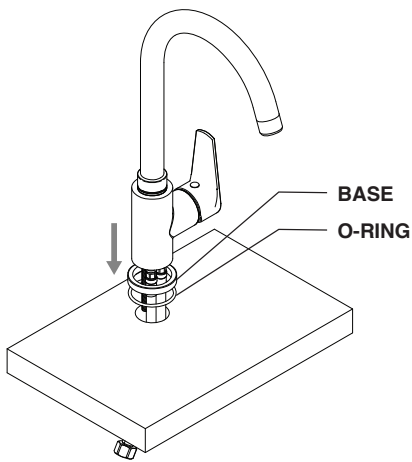
1

Screw the threaded rod into the holes at the bottom of the mixer body.



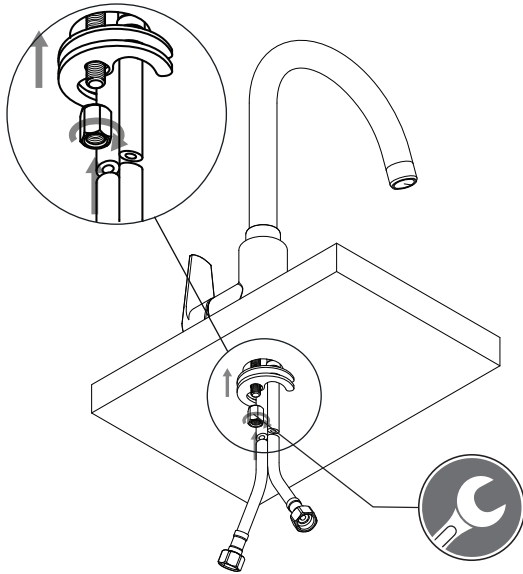
2

Screw the flexible hoses into the water inlet at the bottom of the mixer body.



3

Slide the base and the o-ring over the mixer assembly, then insert the whole block into the basin hole.



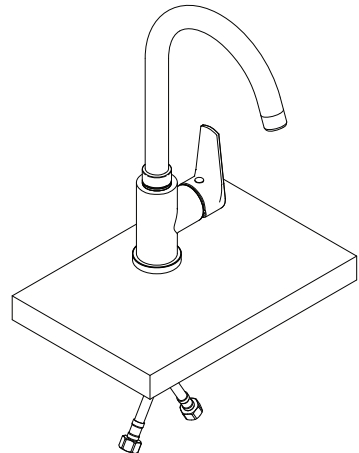
4

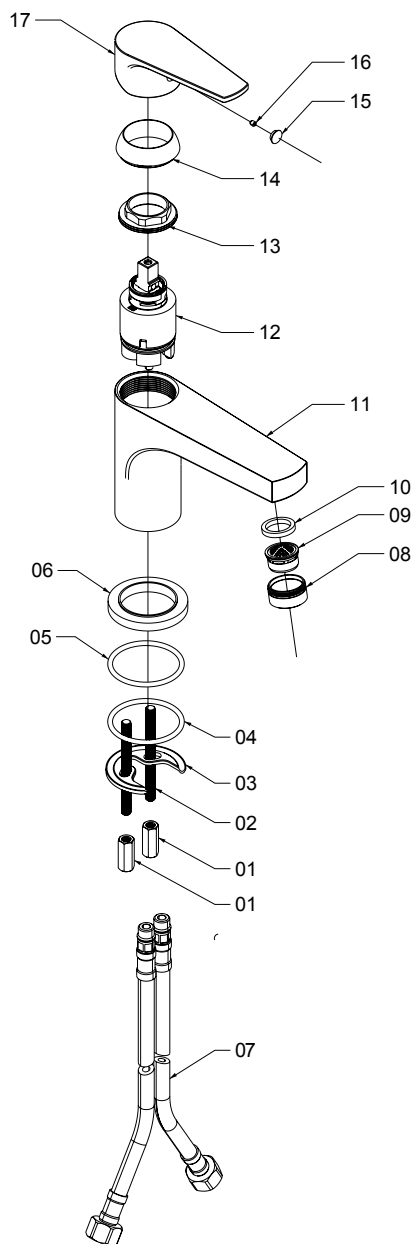
While holding the mixer in place, slide in the rubber gasket and the metal washer of the fixing kit. secondly screw the nut on the threaded rod and fix it using a wrench.



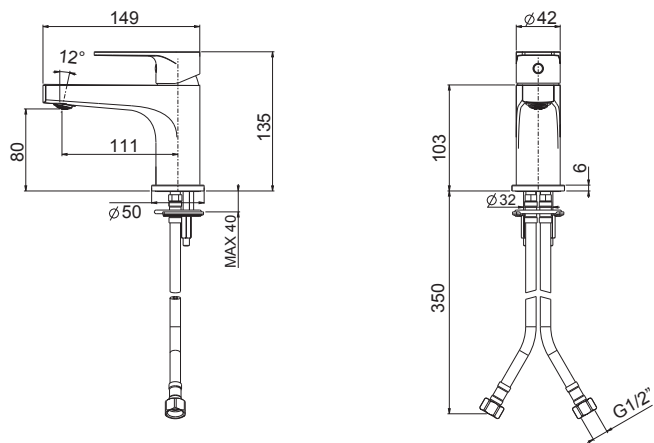
CAUTION

Two operators are required to avoid damages.

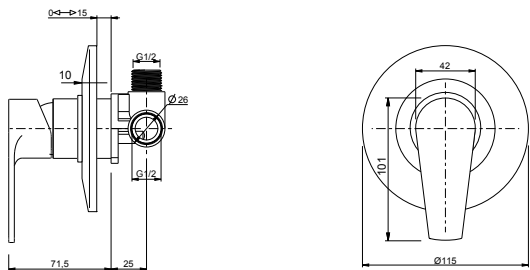




ECO STYLE BASIN MIXER | ES1560N



ECO STYLE SHOWER MIXER | ES2083N



ECO STYLE DIVERTER MIXER | ES2266N

