

INSTALLATION INSTRUCTIONS

EVO URINAL REAR INLET | EV580UR
EVO URINAL TOP INLET | EV580UT

progetto
DESIGN COLLECTION



IMPORTANT!

Please read these instructions **prior** to installation

PRE-LINE FITTING GUIDE:

- Determine finished height of urinal
- Ensure solid fixing in wall as per specifications illustration for mounting blocks (No 12 in parts list).
- Find the fixed heights of the mounting blocks, inlet wingback and outlet waste pipe using the finished height measurements of urinal as per below guide; noting rear inlet comments where applicable:
- Measure from top and bottom of urinal to centre of waste and inlet ports and check against the specifications illustration. This is important to double check these measurements on site as Vitreous China can differ a small percentage from spec when fired.
- Mount waste pipe and 50 mm bend as per exploded drawing (ensure height is correct) NOTE: Set end of 50mm socket back 15mm minimum from finished wall surface.
- Mount 1/2" BSPF wingback in wall to secure fixing, e.g. 4x2 framing (ensure height is correct) NOTE: set end of wingback 10-20mm from finished wall surface (rear inlet only).
- Please refer to our website for documents and videos should further information be required.
- Install wall lining (recommended minimum wall lining thickness of 20mm).

POST-LINE FITTING GUIDE:

- Fix mount blocks to wall as per specifications illustration (it is important at this stage to double check your measurements from the top of the mount blocks to the centre of the inlet and outlet pipes).
- Install supplied brass sparge pipe in to 1/2" BSPF wingback (rear inlet only) and cut thread length if needed.
- Fit rubber grommet into inlet port on urinal (note the large double finned end to the inside, use a screwdriver to carefully mould the rubber grommet to the hole, taking care not to damage the rubber to compromise the water seal. (Check videos on our website) (rear inlet only).
- Assemble waste components on to urinal as per parts list; items 2 to 5. (Check videos on our website)
- There is a small amount of adjustment when installing this part to compensate for waste height differences within the wall.
- Apply lubricant to brass sparge pipe, inside of rubber grommet, and outside of finned key seal.
- Carefully fit urinal onto wall, firstly ensure sparge pipe is fitted into rubber grommet by carefully working the grommet lip on to the end of the brass sparge pipe. (Check videos on our website)
- Once this union is satisfactory, move the complete urinal towards the wall insuring it hangs on the mounting blocks and the finned seal lines up and fits into the 50 mm PVC socket within the wall. This will be a simultaneous fitment so please exercise caution to ensure a tight water seal.
- Push the urinal hard against the wall to check fitment.
- Run water through inlet pipe and flush urinal several times to check for leaks.
- Make sure the urinal is pushed back completely to wall, apply a bead of silicone both complete sides and top of urinal and allow to dry. This will seal the urinal and hold it firmly against the wall lining.

Distributed by:

Plumbline

T 04 568 9898 E sales@plumblin.co.nz
www.plumblin.co.nz

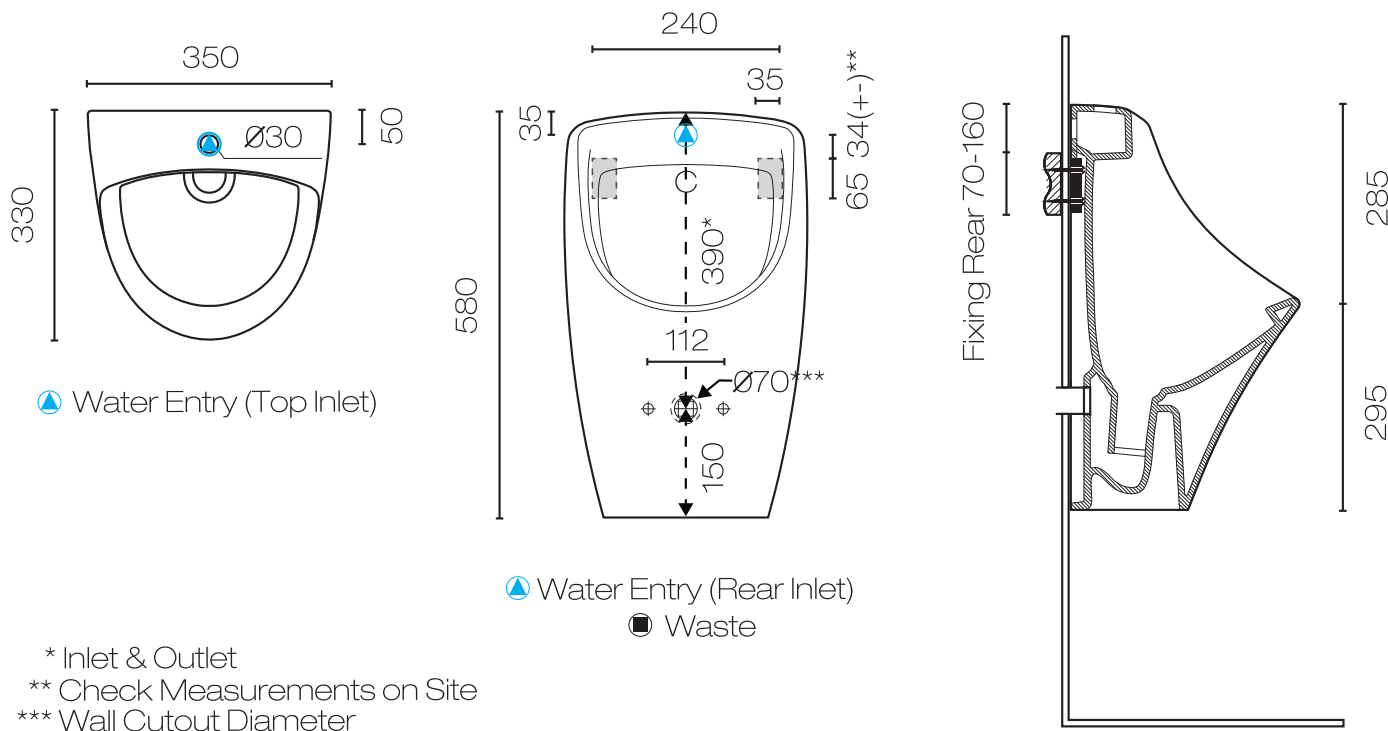
INSTALLATION INSTRUCTIONS

progetto
DESIGN COLLECTION

EVO URINAL REAR INLET | EV580UR

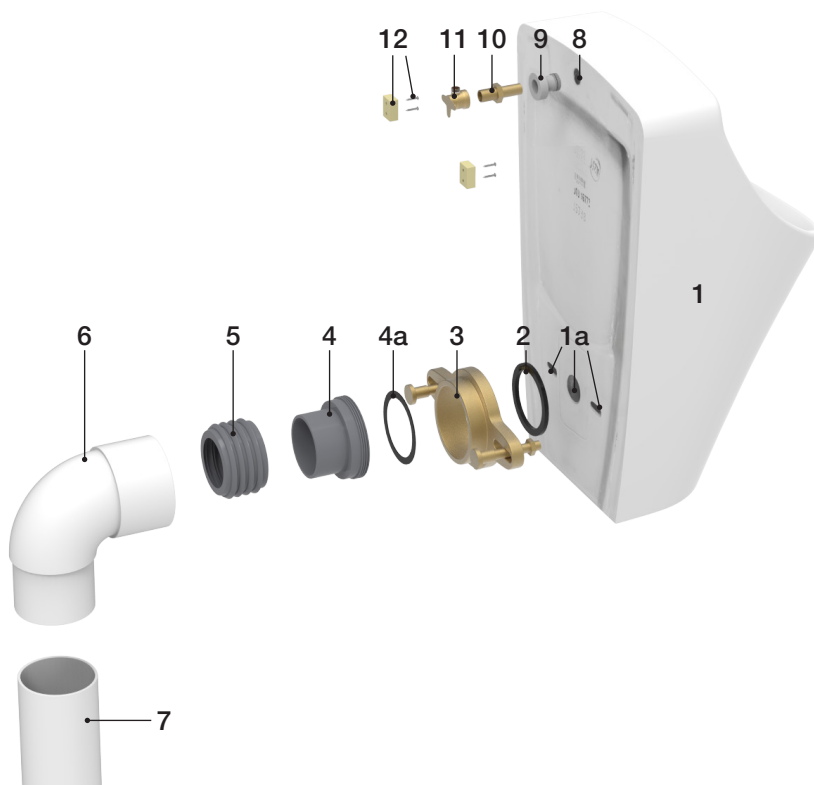
EVO URINAL TOP INLET | EV580UT

SPECIFICATIONS:



PARTS LIST:

1. Urinal
- 1a. Urinal Waste Hole and Bolt Holes
2. Rubber Gasket
3. Brass Thread Housing And Bolt Set
4. Threaded Adaptor
- 4a. Rubber Seal
5. Rubber Finned Key Seal
6. 50mm PVC Bend – 191.50.P (M/F)
101.50.88 (F/F) (Not Supplied)
7. 50mm PVC DWV Waste Pipe
(Not Supplied)
8. Water Inlet Port
9. Rubber Grommet
10. Brass Sparge Pipe
11. Wingback ½" BSPF (Not Supplied)
12. Mount Blocks and Fixings



Distributed by:

Plumblin

T 04 568 9898 E sales@plumblin.co.nz
www.plumblin.co.nz