

# INSTALLATION INSTRUCTIONS

UNIVERSAL LED BATHROOM LIGHT 30CM | UN30L

UNIVERSAL LED BATHROOM LIGHT 60CM | UN60L

progetto  
DESIGN COLLECTION



Model	UN30L	UN60L
Product Specifications	Plastic Mirror Lamp	
Material	Plastic	
Dimensions	L300 x W100mm x H35mm	L600mm x W100mm x H35mm
Light Source:	High Power LED	
Operating Temperature:	-20°C to 45°C - Indoors	
Ingress Protection Grade:	IP44	
Voltage:	230-240V ~ 50Hz	
Power:	5W	9W
Colour:	4000K	
Luminous:	350 Lumens	700 Lumens
Lifespan:	20,000 Hours	

## INSTALLER PLEASE NOTE

Read all installation instructions carefully before commencing installation. We reserve the right to change product specifications due to possible technical improvements.

This product must be used indoors only. The electricity connection and possible subsequent electric interventions must only be done by a qualified electrician who will operate in accordance with current regulations in terms of electricity.

The appliance is not to be used by persons (including children) with reduced physical, sensory or mental capabilities, or lack of experience and knowledge, unless they have been given supervision or instruction.

Children should be supervised so that they do not play with the appliance.

If the supply cord is damaged, it must be replaced by the manufacturer, its service agent or similarly qualified persons in order to avoid a hazard.

Means for disconnection that must be incorporated in the fixed wiring in accordance with AS/NZS wiring rules.

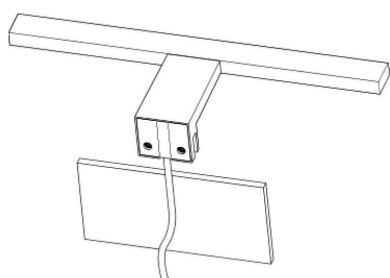
Distributed by:

**Plumblin**e

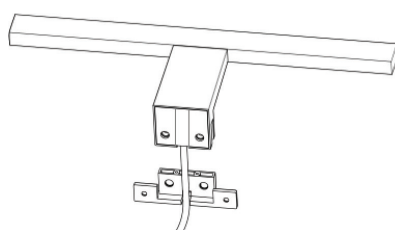
T 04 568 9898 E [sales@plumblin.co.nz](mailto:sales@plumblin.co.nz)  
[www.plumblin.co.nz](http://www.plumblin.co.nz)

### Three different fixing methods:

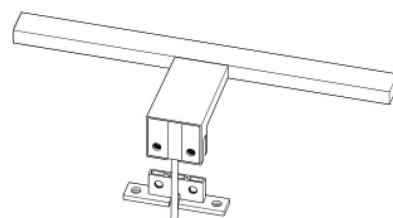
Fixed directly on mirror



Fixed on wall

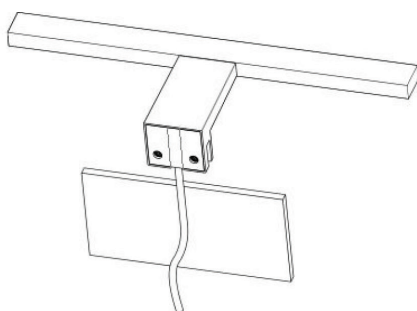


Fixed on cabinet

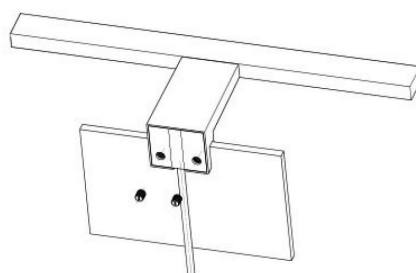


### Mounted On Mirror:

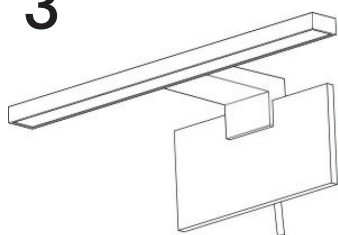
1



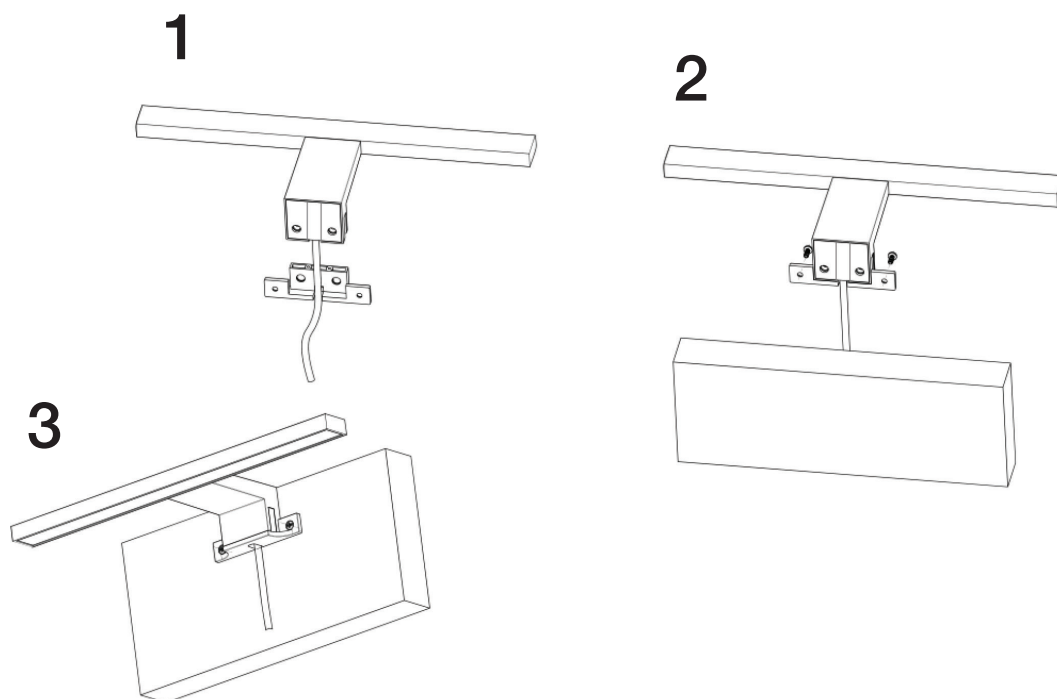
2



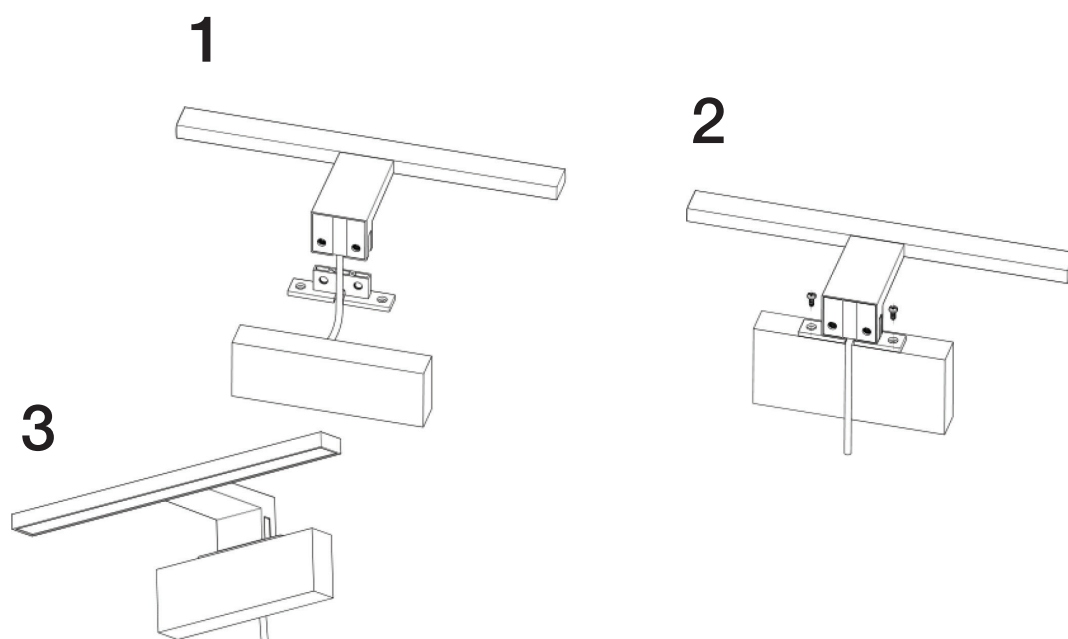
3



**Mounted On Wall:**



**Mounted On Cabinet:**



### Safety Instructions:

- Electrical installation must be carried out by a licenced electrician.
- In case of failure please switch off the power supply immediately.
- The light source of this luminaire is not replaceable. When the light source reaches its end of life the whole luminaire shall be replaced.
- Only use indoors.

### Wiring of 60cm model only:

**Only one flex lead needs to be connected to power the entire light.**

The flex lead that is not connected is not required and can be cut off and insulated at the cable entry.

**Please Note:** The lead that is cut and not used will not back feed any electrical current when the opposing lead is connected to mains 230-240V ~ 50Hz.

