

INSTALLATION INSTRUCTIONS

EVO 55 UNDERMOUNT BASIN | EV55UM

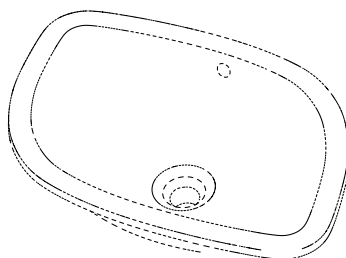
progetto
DESIGN COLLECTION



IMPORTANT!

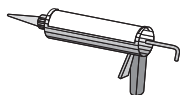
Please read these instructions **prior** to installation

Parts



Undermount Basin

Tools Required For Installation (Not Included)



Glue Gun



Dicing Saw



Tape Measure



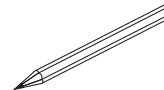
Drill



Faucet



Adjustable
Wrench



Pencil

NOTICE:

1. Make sure the water supply valve is shut off before installation
2. Make sure that you have access to all plumbing and drain fittings, door clearance and any other obstructions

MAINTENANCE

Use soft moist cloth for cleaning of the under counter wash basin. Do NOT use abrasives or hard cloths. Regular cleaning with a soap solution is recommended. Do NOT use strong bleaching agents. If acid liquids penetrate the surface, remove them immediately with a soft cloth.

Distributed by:

Plumbl ine

Exceptional Bathrooms.
Exceptional Choice.

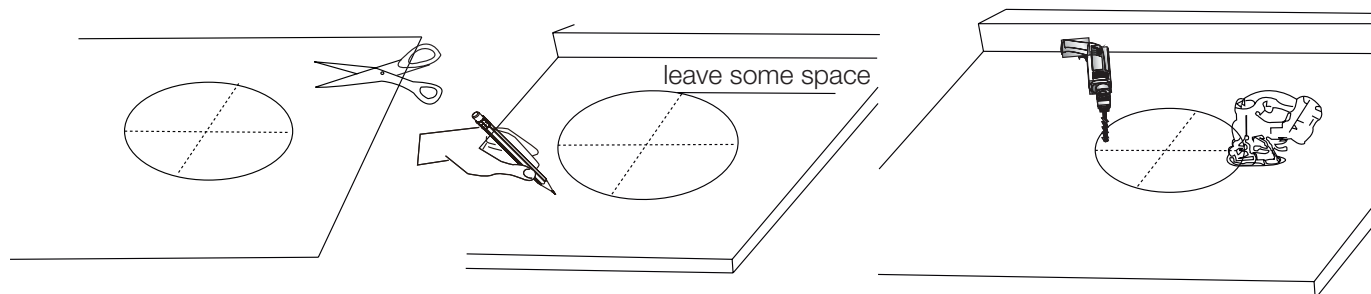
T 04 568 9898 E sales@plumbl ine.co.nz www.plumbl ine.co.nz

INSTALLATION INSTRUCTIONS

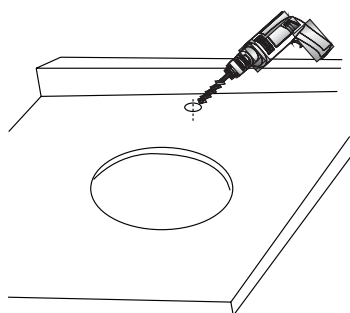
EVO 55 UNDERMOUNT BASIN | EV55UM

progetto
DESIGN COLLECTION

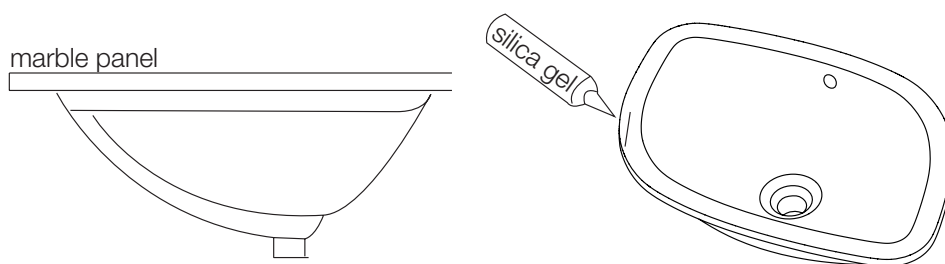
1. Line up the position of the basin



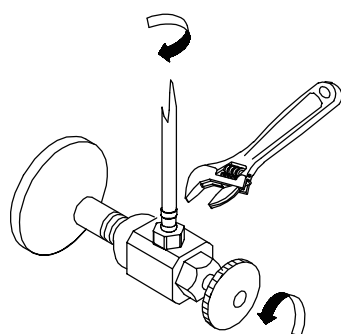
2. Drill the hole



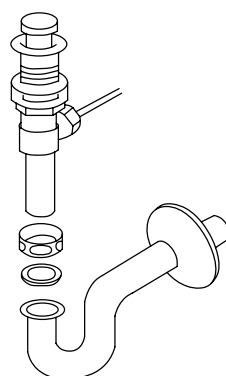
3. Fix the basin to the marble top



4. Connect

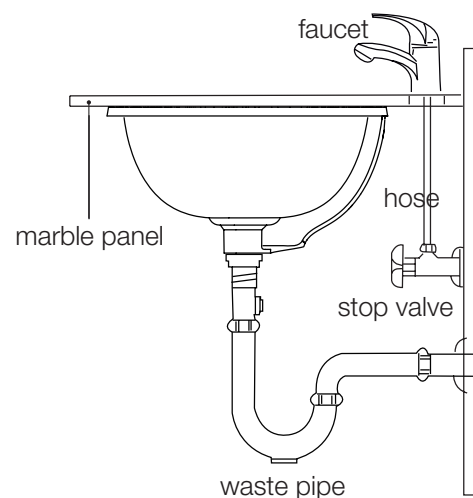


connect the hose to the
angle valve



connect the drain-pipe

5. Finished



Distributed by:

Plumblin

Exceptional Bathrooms.
Exceptional Choice.

T 04 568 9898 E sales@plumblin.co.nz www.plumblin.co.nz