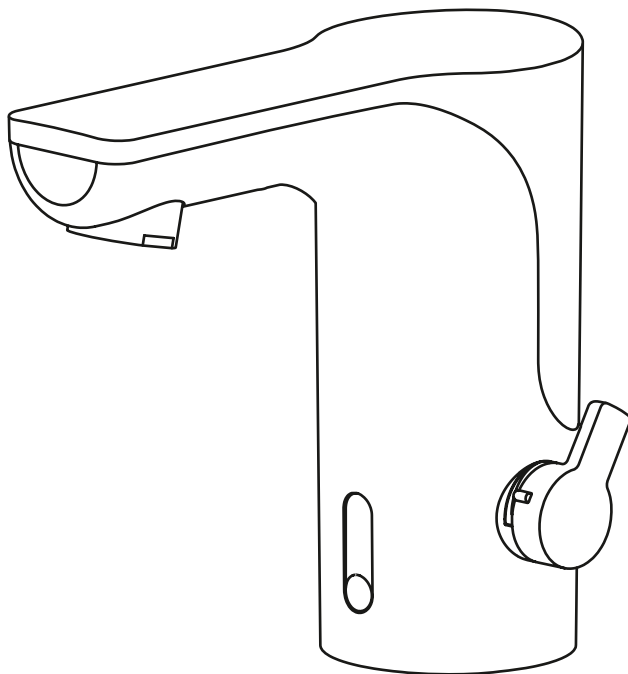


INSTALLATION INSTRUCTIONS

TRON ELECTRONIC SENSOR TAP | TR003

progetto
DESIGN COLLECTION



IMPORTANT!

Please read these instructions **prior** to installation

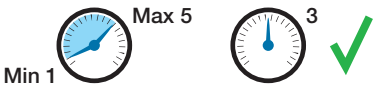
Distributed by:

Plumbline

T 04 568 9898 E sales@plumblin.co.nz
www.plumblin.co.nz

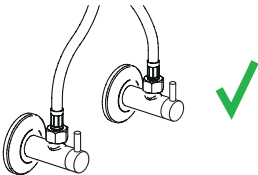
RECOMMENDATIONS FOR INSTALLATION

⚠ ATTENTION: Failure to follow these recommendations may void the warranty. It is recommended that a qualified, licensed tradesperson install this product.



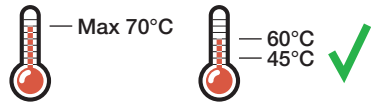
Water Pressure: 3 bar

Product performance cannot be guaranteed if pressure is less than 1 bar. Above 5 bar a pressure regulator must be installed. Failure to do so voids the product warranty.

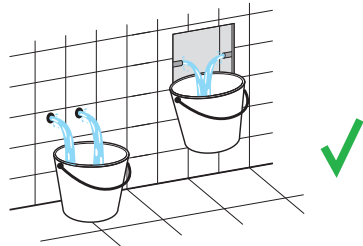


Stop Taps/Filters

Angle valves and/or filters must be used to prevent impurities and debris entering the mixer.



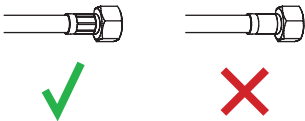
Water Temperature: 45°-60°C



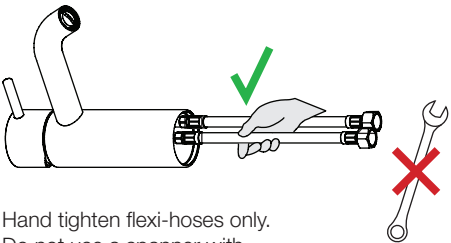
Pre-Flush

Always flush out the pipework before connecting any tapware. Failure to do so voids the product warranty.

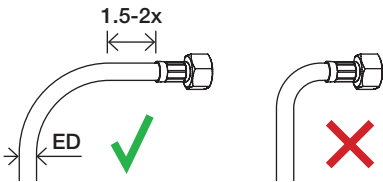
Flexible Hoses



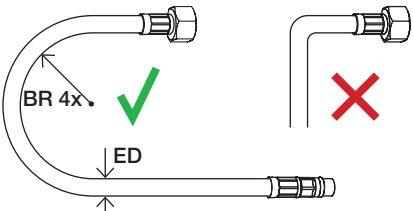
Before installation check that both end fittings of the flexible hoses are well tightened/crimped. If in doubt do not install the flexible hose.



Hand tighten flexi-hoses only. Do not use a spanner with excessive force.

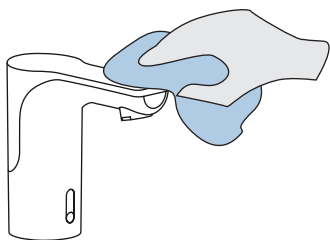


Before any bends ensure there is a straight section of the flexible hose from the hose crimp of at least 1.5-2 times the external (ED) diameter of the hose.



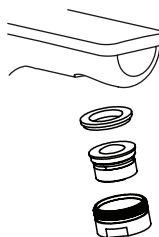
Flexible hose bending radius (BR) should be less than four times the external diameter (ED) of the hose. Do not install with any tension, twists, pinch points or sharp bends/kinks.

CLEANING & MAINTENANCE



Cleaning

Clean with warm soapy water and a smooth cloth. Do not use organic, alcohol-based, corrosive or abrasive cleaners or detergents as these will damage the finish.

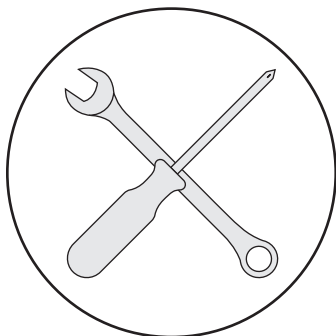


Aerator Maintenance

Remove the aerator, either with a spanner or an aerator cartridge key.

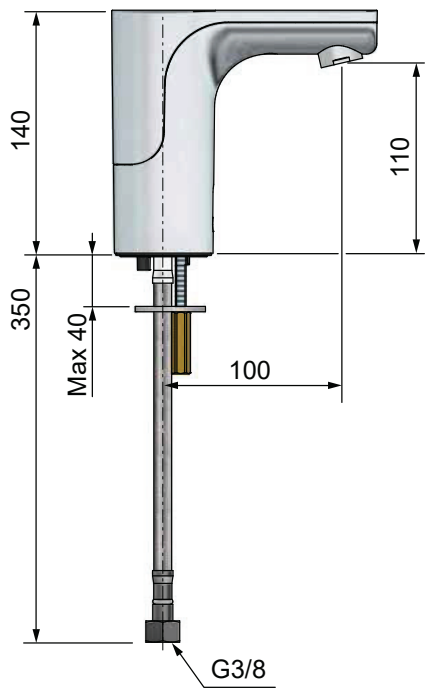
Immerse for half a day in water-vinegar solution (80-20%).


Wash, then reassemble.

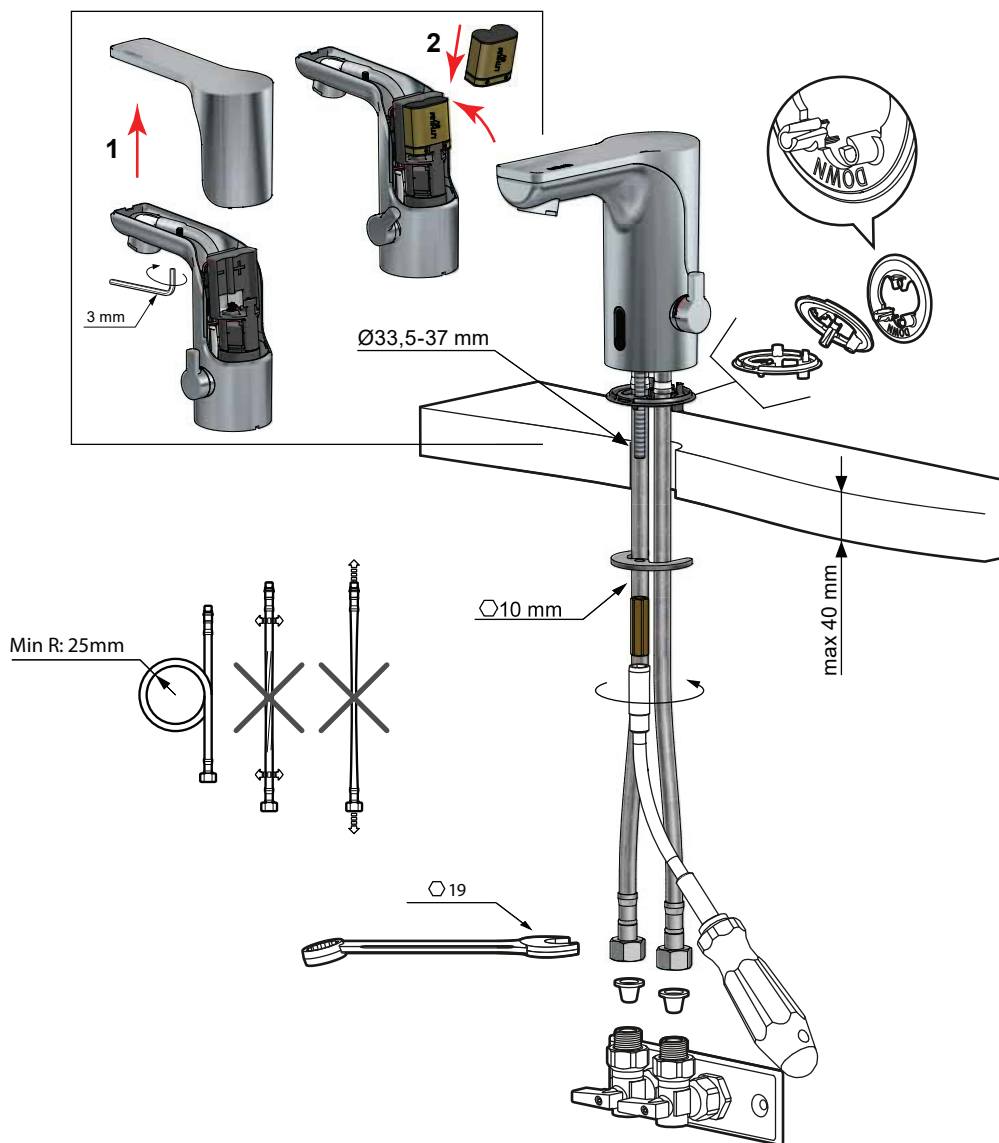


Warranty Information

For full details about our warranty visit
plumbline.co.nz/warranty-information



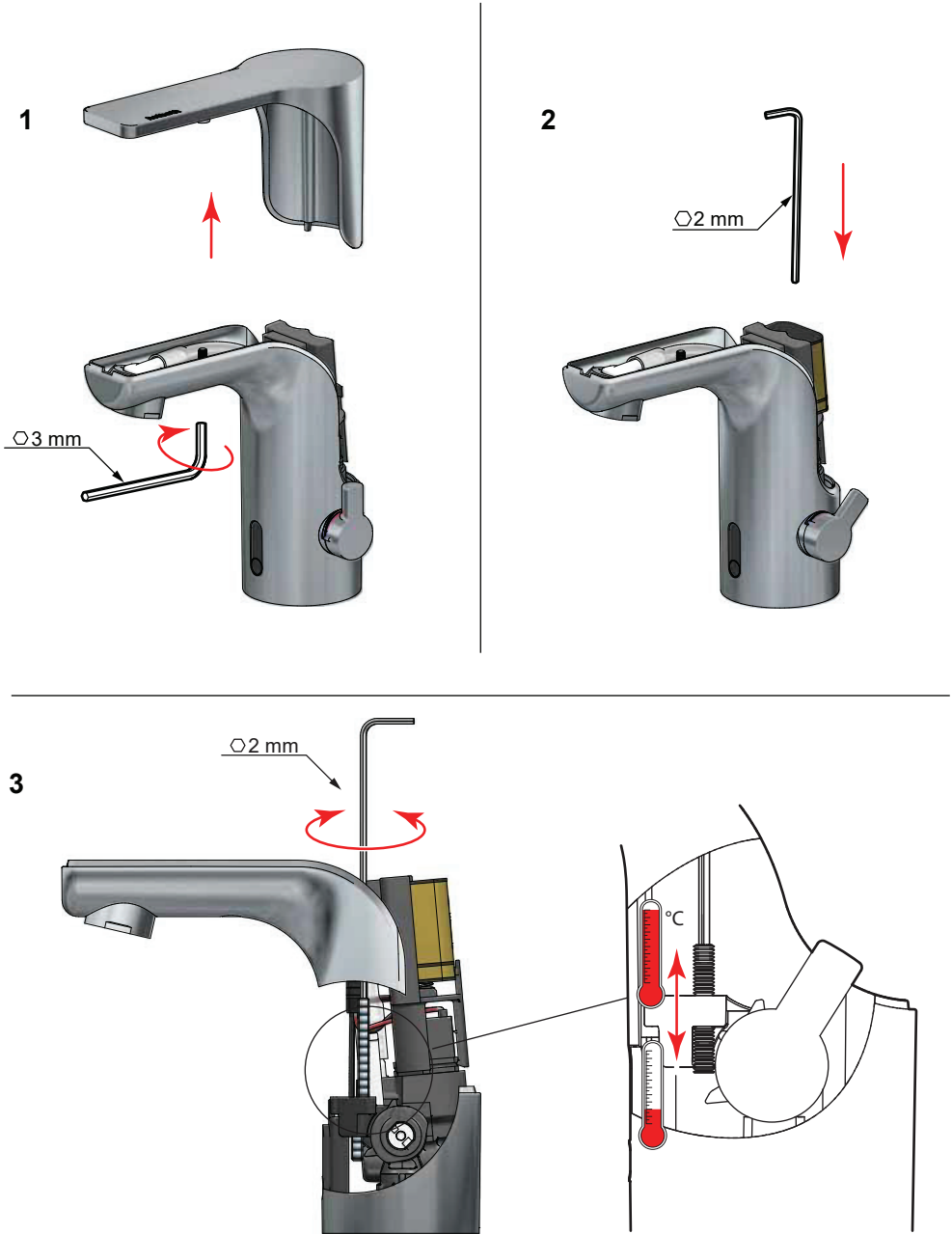
Standard	EN 15091
Operating pressure	1–5 Bar (3 Bar)*
Test pressure	16 Bar
Flow rate	5 l/min
Max. inlet hot water temperature	70 °C (60 °C)*
Check valves	SS-EN 1717 
Connection to water supply	G3/8 Soft PEX®
Battery type	CR-P2 6V Lithium
External power supply (optional)	12V AC/DC, 50Hz, >7W
Sensor	Attivo IR / Active IR
Sensor IP rating	IP67
* Recommended setting	



REMOVING THE SIDE KNOB

progettò

For use with preset temperature

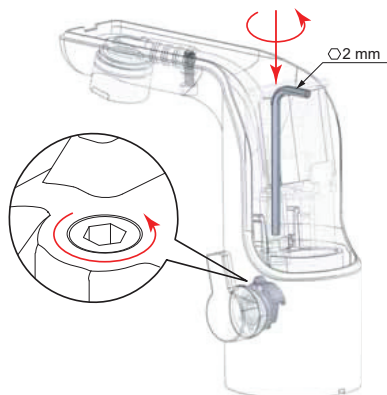


REMOVING THE SIDE KNOB

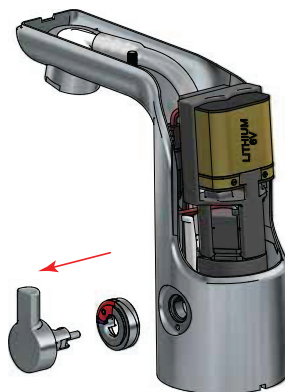
For use with preset temperature

progettò

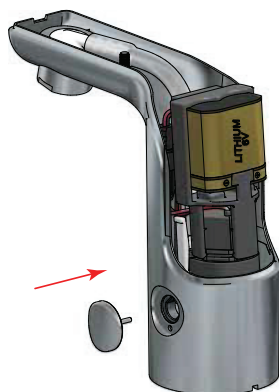
4



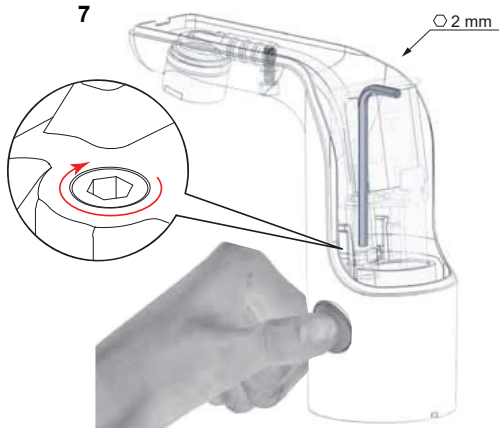
5



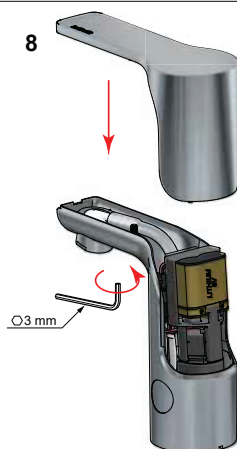
6



7



8





- (1) Start the mixer once before starting the programming.
- (2) Press a finger against the lower part of the sensor for 15 seconds.
- (3) Remove your finger, then replace it after 5 seconds.
- (4) While the red light is flashing *, select a program by removing your finger immediately after the number of flashes that corresponds to your chosen program (1–6). For example, if you want to select program 2, remove your finger after 2 flash **.



- P1 *
- P2 **
- P3 ***
- P4 ****
- P5 *****
- P6 *****

Program	Flush time after use	Hygiene flush time interval (regardless of past usage)	Hygiene flush time	Sustained flush time (manual)
1 (default)	2 seconds	none	none	30 seconds
2	4 seconds	none	none	30 seconds
3	6 seconds	none	none	30 seconds
4	2 seconds	72 hours	3 minutes	30 seconds
5	4 seconds	72 hours	3 minutes	30 seconds
6	6 seconds	72 hours	3 minutes	30 seconds



To keep open flow for 30 seconds

- (1) Start the mixer once before activating this function.
- (2) Press and keep your finger on the lower part of the sensor window for one second to start a 30 second flush cycle (3).
- (4) In case you want to stop the extended flow, put your finger back for two seconds.





To stop function for 60 seconds in order to allow the external cleaning of the mixer:

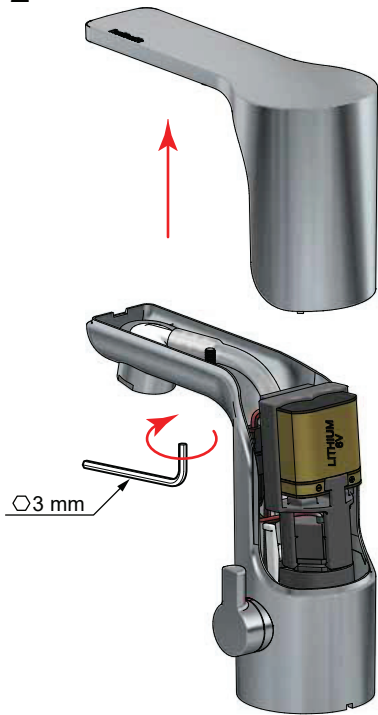
- (1) Start the mixer once before activating this function.
- (2) Press and keep your finger on the lower part of the sensor window until the red light starts flashing (approximately 15 seconds).
- (3) Flush will stop for 60 seconds. A red light * will flash during the cleaning mode.
- (4) When the flashing stops, the tap will return to normal function.



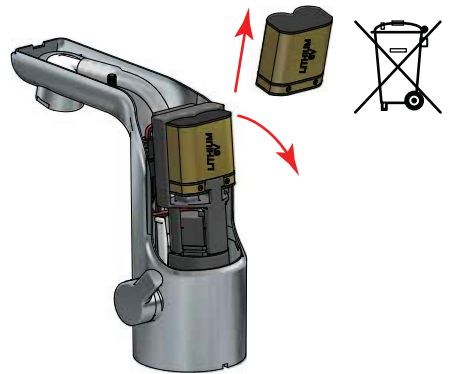
1



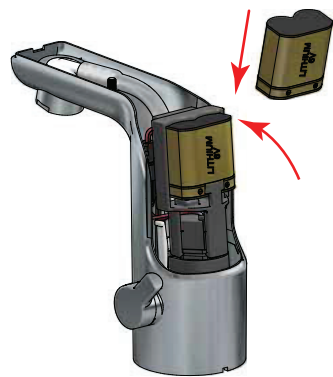
2



3

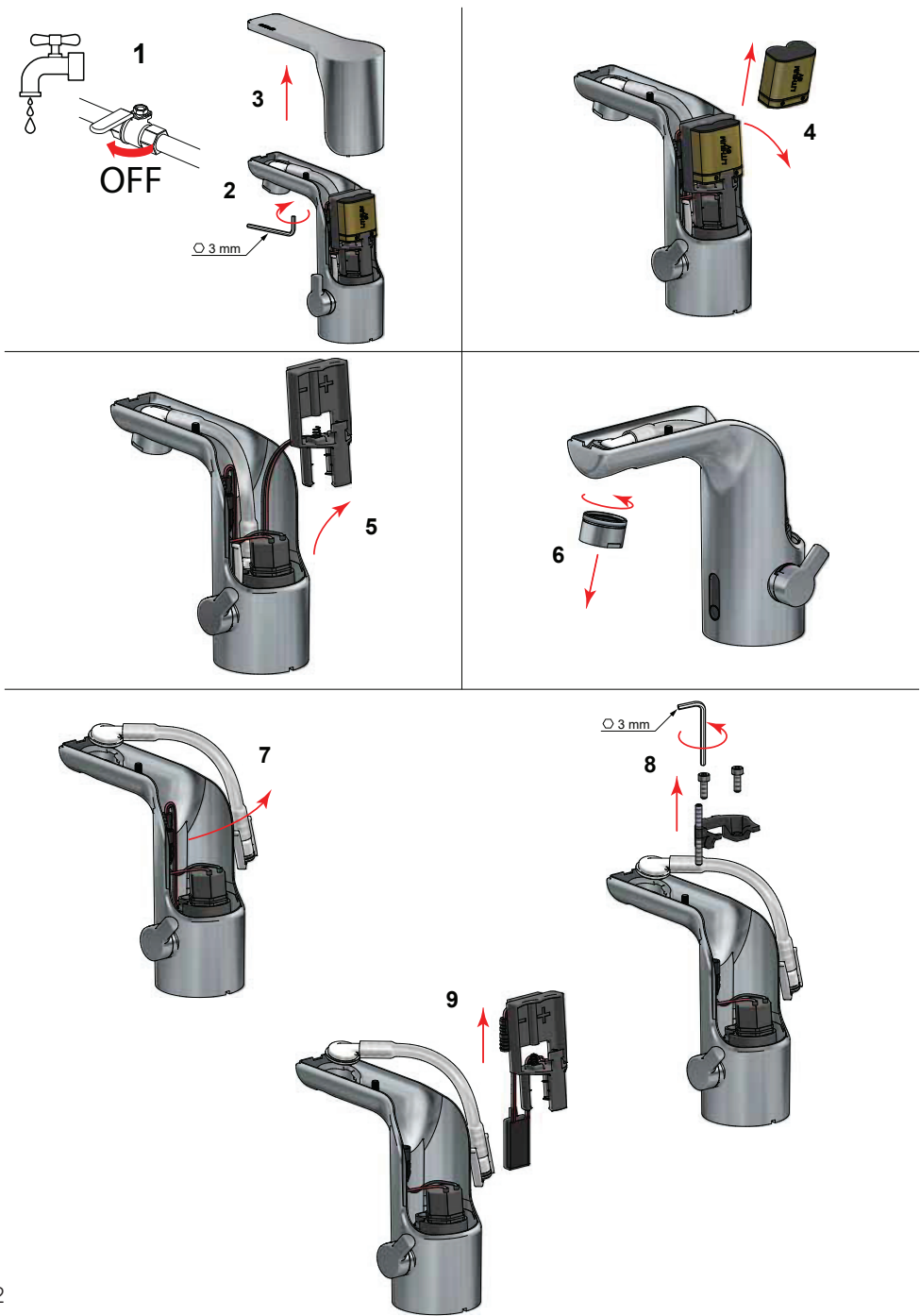


4



SENSOR REPLACEMENT

progettaz

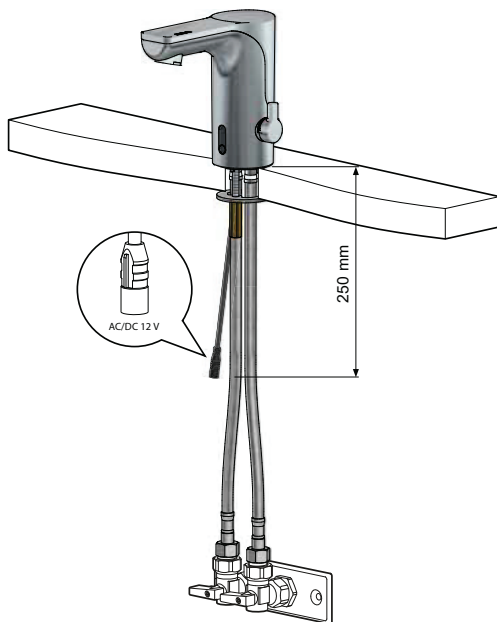
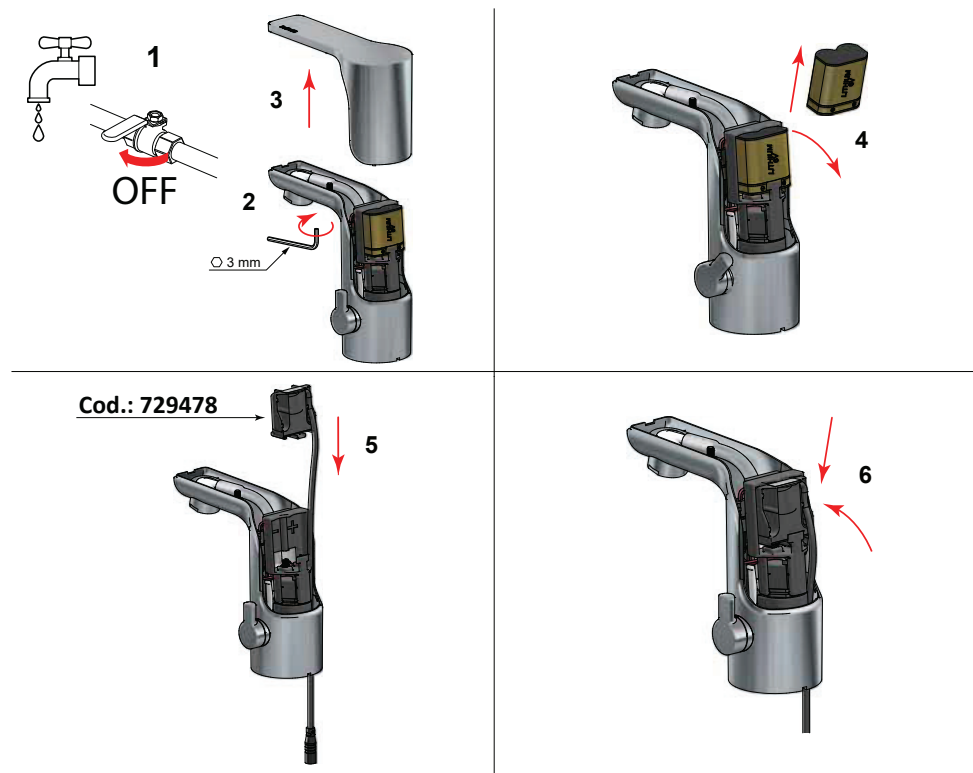




EXTERNAL POWER SUPPLY (OPTIONAL)

progettò

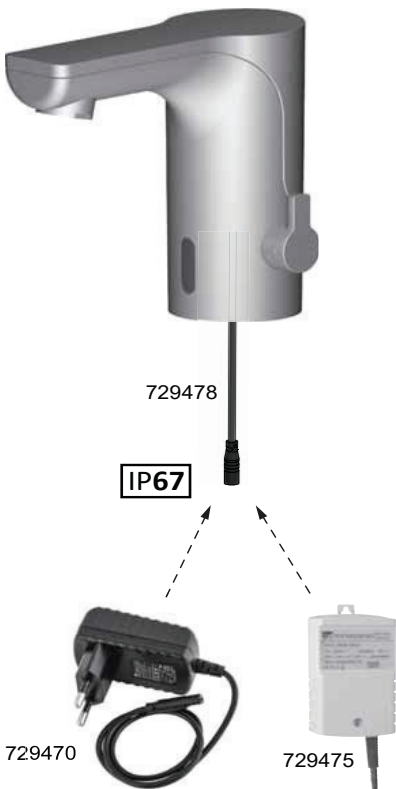
External power supply parts available on request



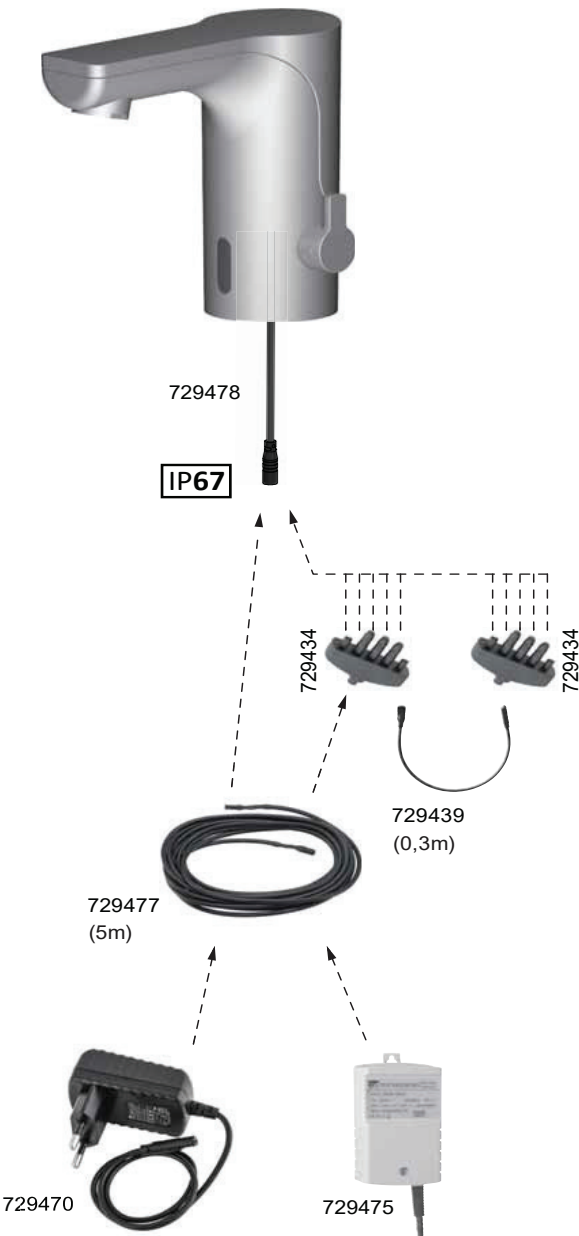
EXTERNAL POWER SUPPLY (OPTIONAL)

External power supply parts available on request

For 1 sensor mixer



For 2-9 sensor mixers in-line



Fault	Possible cause	Action
No water comes out when tap is activated	Supply voltage is too low	Check battery/voltage
	Blocked inlet screens	Clean the inlet screens
	Defective/blocked solenoid valve	Replace the solenoid valve
Tap does not turn off	The mixer may be in hygiene flush mode	Wait three to thirty minutes or briefly switch off the power. (Yellow LED flashes in flush mode)
	Faulty solenoid valve	Replace the solenoid valve
	Flush time may be set too high	Wait up to thirty seconds or briefly switch off the power. Re-set the sensor.
The tap starts running without being turned on	Hygiene flush mode may be activated. Yellow LED flashes in hygiene flush mode	Change program, 1–3
The tap drips	Leaking solenoid valve	Replace the solenoid valve
The sensor is flashing	Supply voltage is too low	Check battery/voltage
The temperature is not correct	Incorrect water pressure and temperature	Set the temperature value on its coldest/ hottest setting and check that the water pressure and temperature are high enough
	The screw for the temperature limiter is not set correctly	Turn the temperature knob to its hottest setting and check the temperature. Then see the section regarding the temperature limiter.
The pressure is too high/ low	The aerator is blocked	Clean the aerator
	The filters (inlet/solenoid valve) are blocked	Clean the inlet screens and replace the solenoid valve if necessary
The programme can not be changed	The tap needs to be activated immediately before programming	Activate it by hand before programming