

INSTALLATION INSTRUCTIONS

progetto
DESIGN COLLECTION

COMO ROUND SHOWER COLUMN | C7906RD
COMO SQUARE SHOWER COLUMN | C7906SQ



IMPORTANT!

Please read these instructions **prior** to installation

Distributed by:

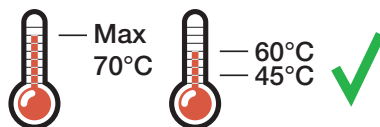
Plumbline

T 04 568 9898 E sales@plumblin.co.nz
www.plumblin.co.nz

RECOMMENDATIONS FOR INSTALLATION



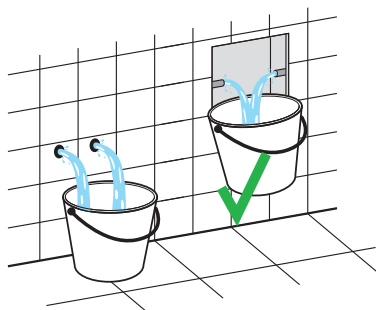
ATTENTION: Failure to follow these recommendations may void the warranty. It is recommended that a qualified, licensed tradesperson install this product.



Water Pressure: 3 bar

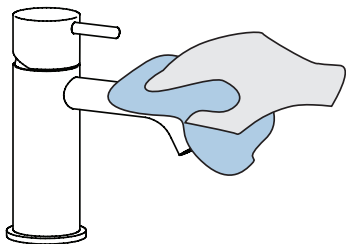
Product performance cannot be guaranteed if pressure is less than 1 bar. Above 5 bar a pressure regulator must be installed. Failure to do so voids the product warranty.

Water Temperature: 45°-65°C



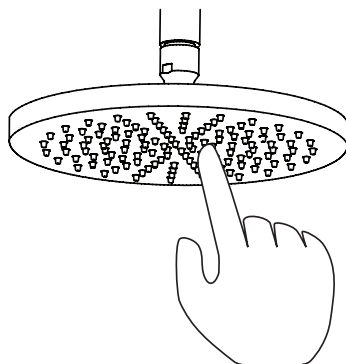
Pre-Flush

Always flush out the pipework before connecting any tapware. Failure to do so voids the product warranty.



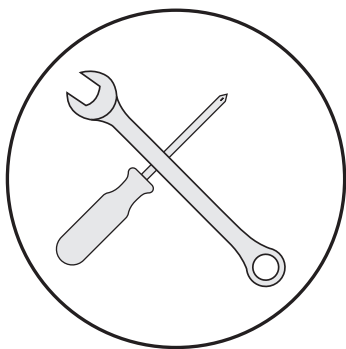
Cleaning

Clean with warm soapy water and a smooth cloth. Avoid abrasive sponges or detergents as these will damage the finish.



Nozzle Maintenance

To remove calcium/lime build-up on the rainhead nozzles, periodically clean them by flicking them with your finger as shown.

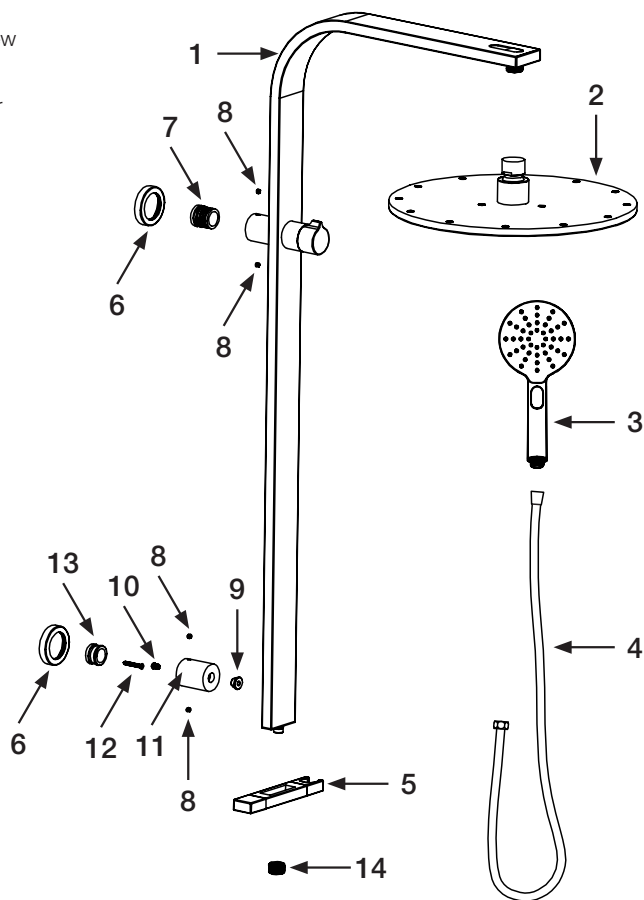


Warranty Information

For full details about our warranty visit
plumbline.co.nz/warranty-information

COMPONENTS

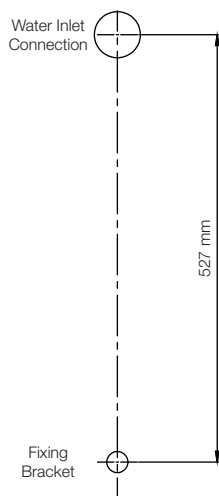
- 1 Column/Rail
- 2 Rainhead
- 3 Handpiece
- 4 Shower Hose
- 5 Slider
- 6 Flange
- 7 Water Inlet Spigot
- 8 M5 Grub Screw
- 9 Wall Bracket Locator Bush
- 10 M6 Screw for Wall Bracket Locator Bush
- 11 Wall Bracket Sleeve
- 12 Wall Bracket Spigot Screw
- 13 Wall Bracket Spigot
- 14 Hose Connector Adapter



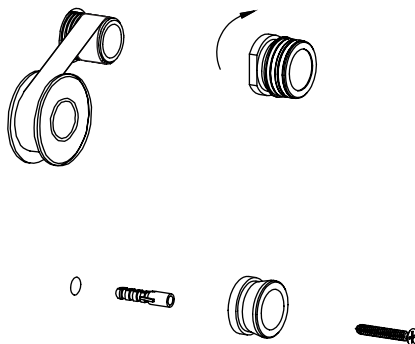
INSTALLATION INSTRUCTIONS

progetto

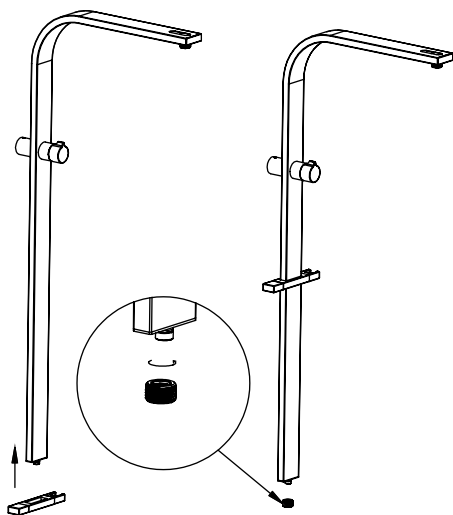
- 1 Measure out for the Wall Bracket Spigot as per diagram below



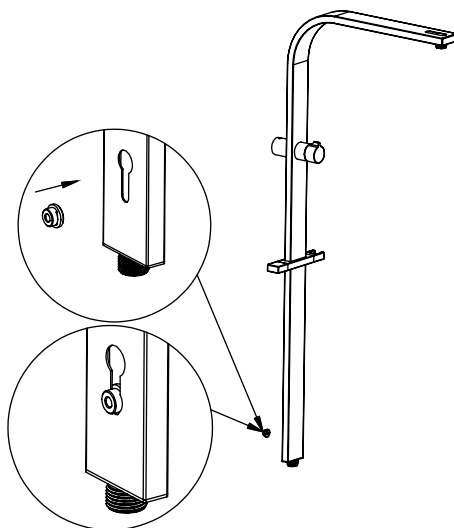
- 2 Fix the Wall Bracket Spigot using suitable fixing (and a wall plug if required). Apply thread seal tape to the male threaded wall fitting and screw on the Water Inlet Spigot.



- 3 Install the Slider onto the Column/Rail, then install the Hose Connector Adapter.



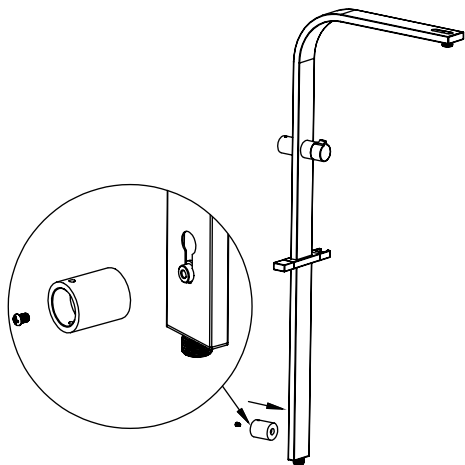
- 4 Install the Wall Bracket Locator Bush into the slot at the back of the Column/Rail.



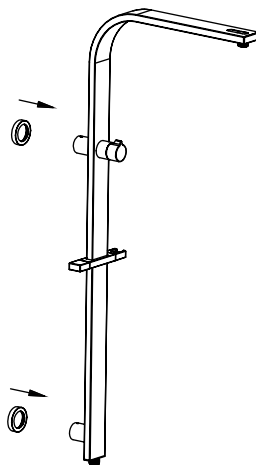
INSTALLATION INSTRUCTIONS

progetto

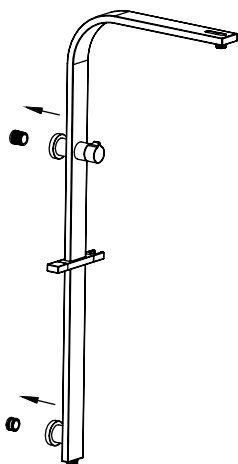
- 5 Place the Wall Bracket Sleeve over the Wall Bracket Locator Bush and fix using the M6 screw provided.



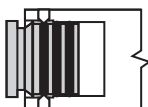
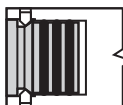
- 6 Place the Flanges onto the Water Inlet Sleeve and the Wall Bracket Sleeve.



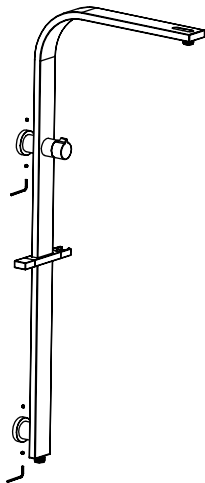
- 7 Install the Column unit onto the Water Inlet Spigot and the Wall Bracket Spigot.



- 8 Ensure the Water Inlet Spigot is seated properly inside the sleeve. If not seated properly the grub screws may pierce the O-rings causing it to leak.



- 9** Fasten the Column to the Water Inlet Spigot and the Wall Bracket Spigot using the M5 grub screws provided.



- 10** Fit the Rainhead, Shower Hose and Handpiece.

