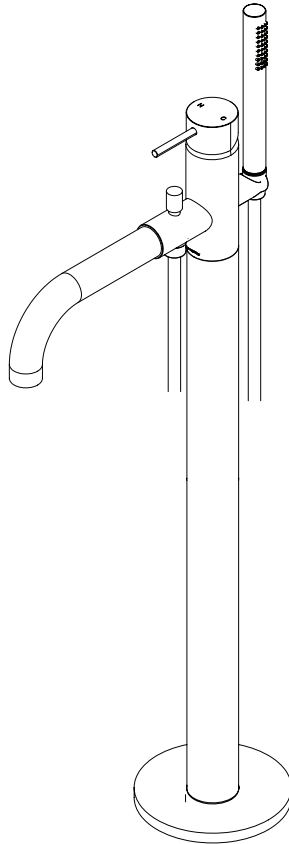


INSTALLATION INSTRUCTIONS

progetto

OLI 316 FLOOR MOUNT BATH FILLER & HANDSHOWER | OL077



IMPORTANT!

Please read these instructions **prior** to installation

Distributed by:

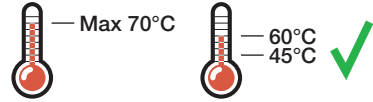
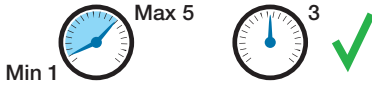
Plumbline

T 04 568 9898 E sales@plumblin.co.nz
www.plumblin.co.nz

RECOMMENDATIONS FOR INSTALLATION



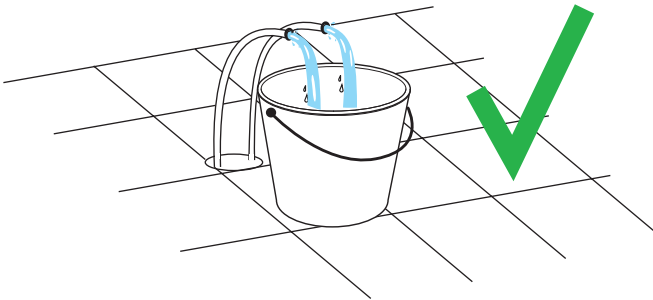
ATTENTION: Failure to follow these recommendations may void the warranty. It is recommended that a qualified, licensed tradesperson install this product.



Water Pressure: 3 bar

Product performance cannot be guaranteed if pressure is less than 1 bar. Above 5 bar a pressure regulator must be installed. Failure to do so voids the product warranty.

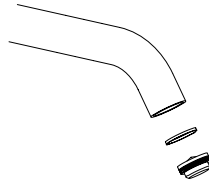
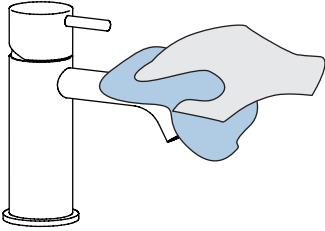
Water Temperature: 45°-65°C



Pre-Flush

Always flush out the pipework before connecting any tapware. Failure to do so voids the product warranty.

CLEANING & MAINTENANCE



Cleaning

Clean with warm soapy water and a smooth cloth. Avoid abrasive sponges or detergents as these will damage the finish.

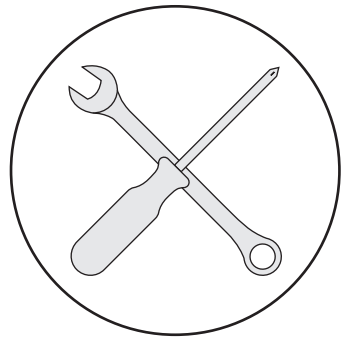
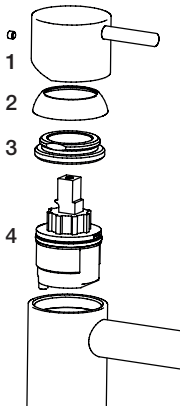
To preserve the finish it is recommended to apply a stainless steel oil/mineral oil on a monthly basis.

Aerator Maintenance

Remove the aerator, either with a spanner or an aerator cartridge key.

Immerse for half a day in water-vinegar solution (80-20%).

Wash, then reassemble.




Cartridge Replacement

Before you start, turn off the water supply to the mixer.

1. Remove the handle
2. Unscrew the dome (hand tightened)
3. Unscrew the locking nut
4. Remove the cartridge

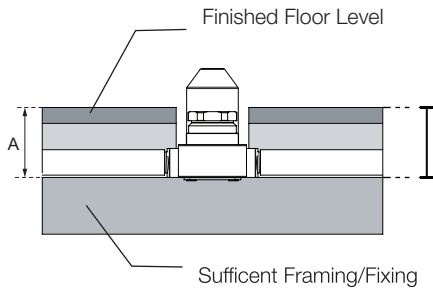
Re-assemble in reverse order

 Max tightening torque on locking nut: 10-12 Nm

Warranty Information

For full details about our warranty visit plumbline.co.nz/warranty-information

- 1 Prior to installation, ensure that the finished floor level will sit between the min and max on the distributor body indication sticker.

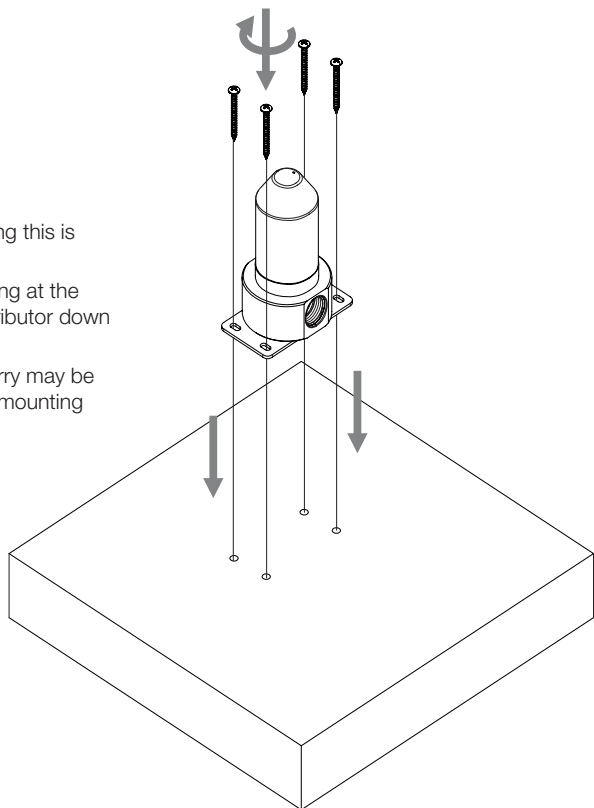


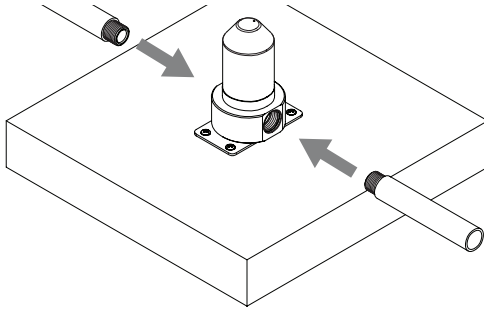
Refer website spec drawing for min/max floor level.

- 2 Fix down the distributor ensuring this is sufficiently fastened.

For wooden floors, install framing at the correct depth to fasten the distributor down to.

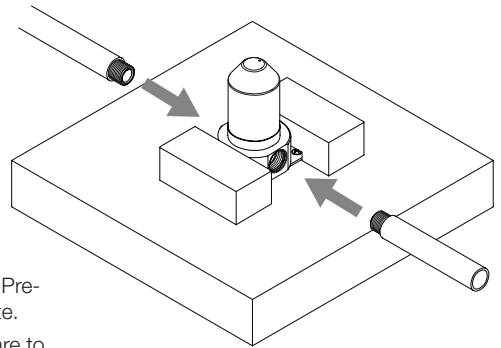
For concrete floors, a small slurry may be needed to achieve the correct mounting depth.



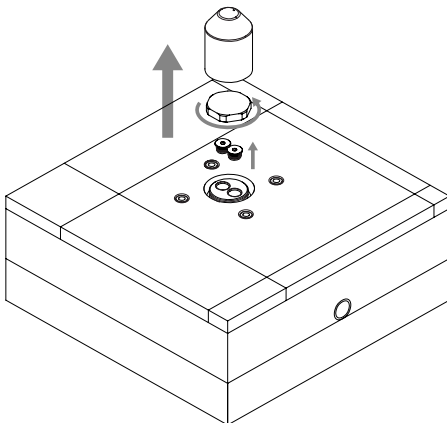
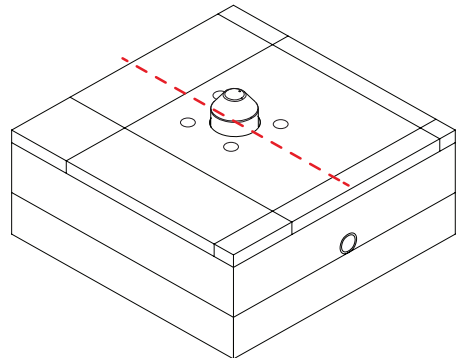


- 3** Connect the hot and cold water inlets to the distributor body. Then prior to the distributor being enclosed by the flooring, pressure test the unit to ensure there are no leaks this pressure must not exceed 1500kpa.

IMPORTANT - This test must be done with the plugs and caps (shown in step 5) inserted.

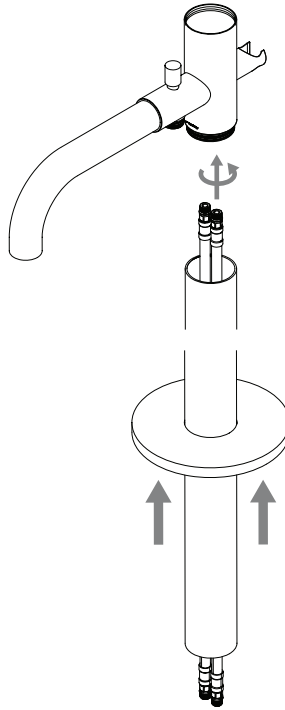


- 4** Once the finished floor level is complete Pre-drill the fixing holes for the mounting plate.
IMPORTANT! This must be done with care to ensure the water inlet piping is avoided.
IMPORTANT! These holes must be drilled into sufficient framing as this fixing plate is what will secure the bath filler in place.

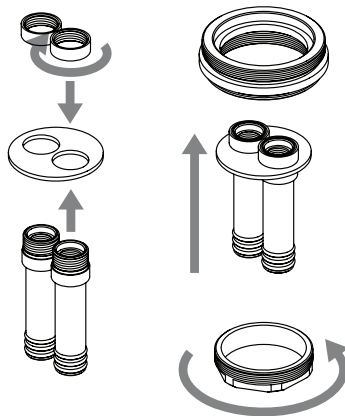


- 5** Remove the protective sleeve, the brass cap and water inlet plugs.

- 6 Connect up the flexible hoses to the body of the mixer then screw the leg onto the body and slide the flange up the leg.



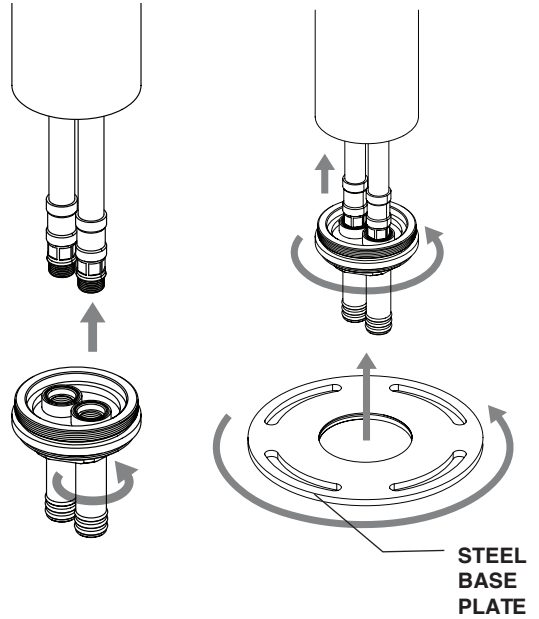
- 7 Connect up the water inlet assembly as shown in the diagram.



INSTALLATION INSTRUCTIONS

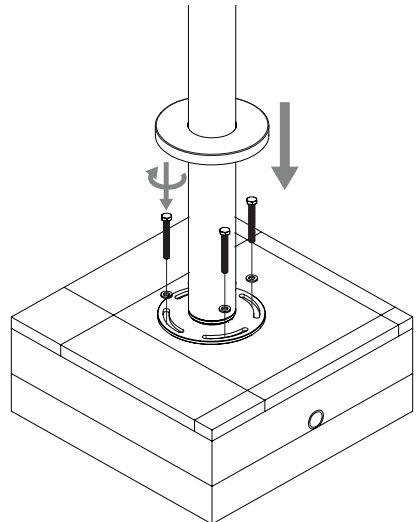
progetto

- 8 Screw the water inlet assembly to the leg of the bath filler, then screw the threaded base plate on the underside.



- 9 Rotate the bath filler to the desired position and fasten it down to the floor while ensuring the fixing screws are away from the water inlets.

IMPORTANT - Apply a bead of silicone around the edge of the flange to ensure the waterproofing isn't compromised.



- 10** Finally, connect up the hose and handpiece, then test for performance.

