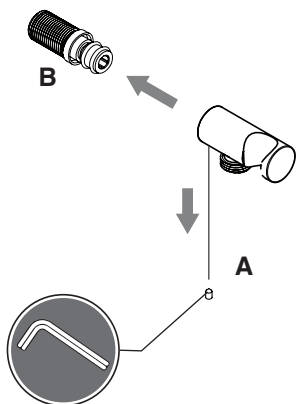


# INSTALLATION INSTRUCTIONS

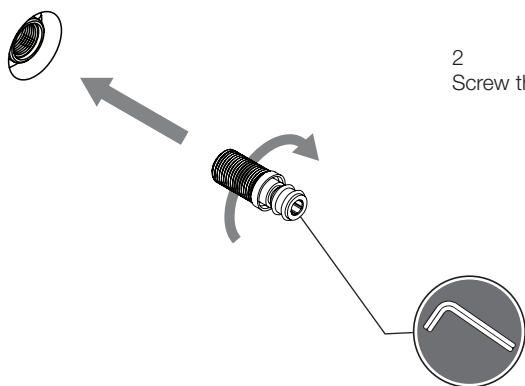
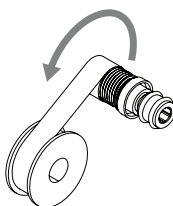
progetto  
DESIGN COLLECTION

OLI 316 WALL MOUNT SHOWER KIT | OL440/OL442



1

Firstly, remove the threaded spigot from the wall bracket. Then apply thread sealant onto the threaded spigot.



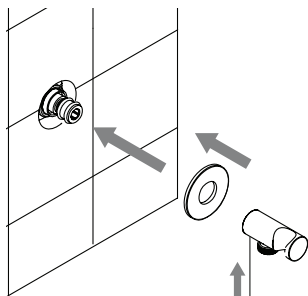
2

Screw the threaded spigot into the wingback.

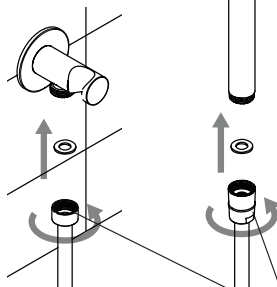
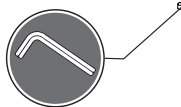
# INSTALLATION INSTRUCTIONS

progetto  
DESIGN COLLECTION

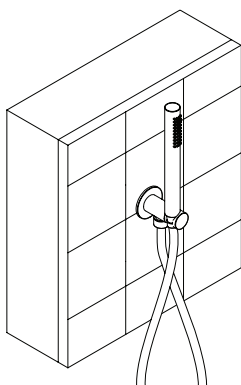
OLI 316 WALL MOUNT SHOWER KIT | OL440/OL442



3  
Slide the wall bracket and the flange back to the wall onto the spigot, while applying a bead of silicone behind the flange. Tighten the wall bracket in place with the locking grub screw.



4  
Finally, install the hose and handpiece then test for performance.



Distributed by:

**Plumblin**

T 04 568 9898 E [sales@plumblin.co.nz](mailto:sales@plumblin.co.nz)  
[www.plumblin.co.nz](http://www.plumblin.co.nz)