

# INSTALLATION INSTRUCTIONS

## CLAWFOOT BATHS

progetto  
DESIGN COLLECTION



**IMPORTANT!**

Please read these instructions **prior** to installation

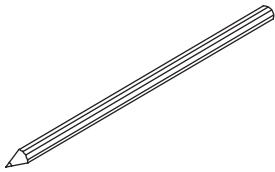
Distributed by:

**Plumblin**e

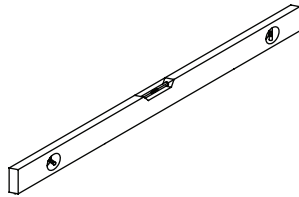
T 04 568 9898 E [sales@plumblin.co.nz](mailto:sales@plumblin.co.nz)  
[www.plumblin.co.nz](http://www.plumblin.co.nz)

## Tools Required For Installation

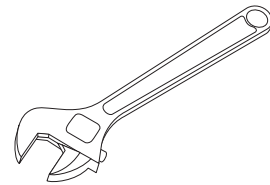
Note: Ensure that no tools are left in the base of the bath during installation



Pencil



Level



Adjustable Wrench

## Feet Installation

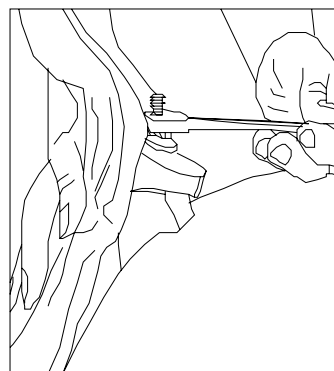
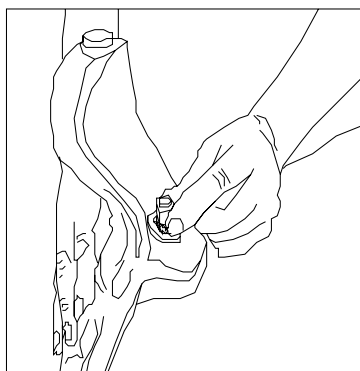
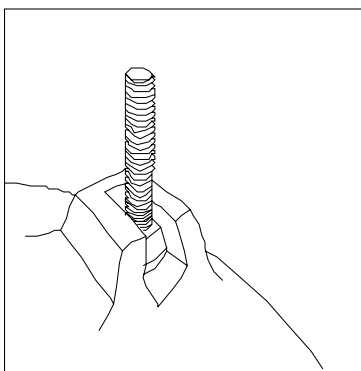
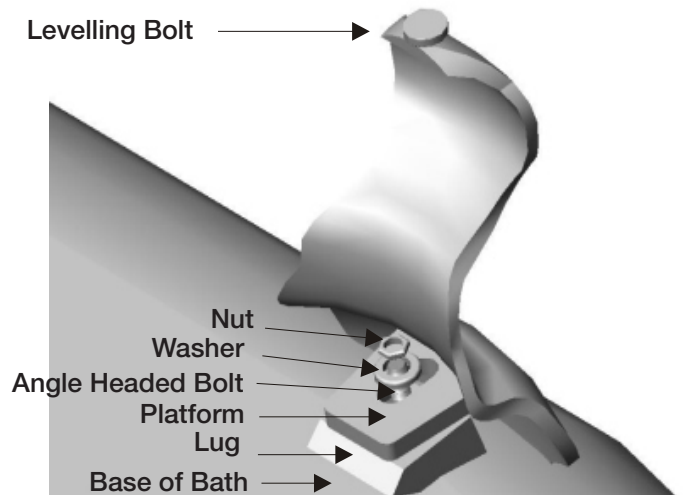
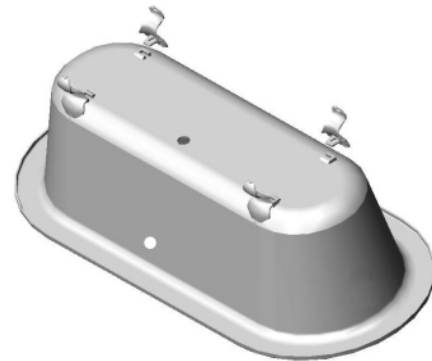
1. Carefully turn the bath upside down onto a sheet or piece of cardboard ensuring no damage is caused to the rim.

2. On particular models the bath feet will have letters on them, in the case that they do, the letters on the feet must correspond with the letter positions on the bath.

3. Slide the bolt into the lug on the underside of the bath then sit the foot in place.

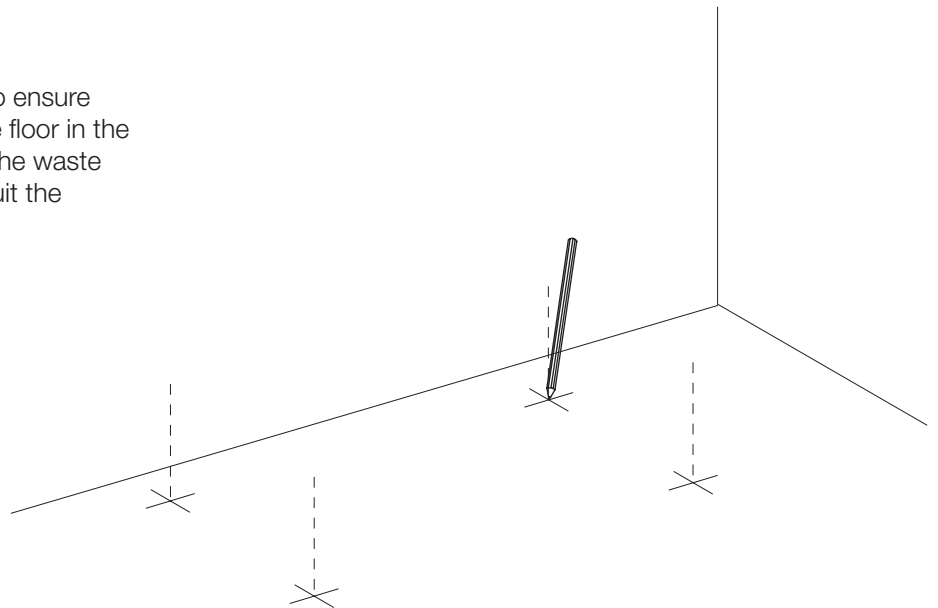
4. Sit the washer down on the bolt and fasten the foot in place with the nut. Ensure the foot is sitting in the correct place before tightening the nut with the wrench.

5. Repeat steps 3 & 4 on the the remaing feet.



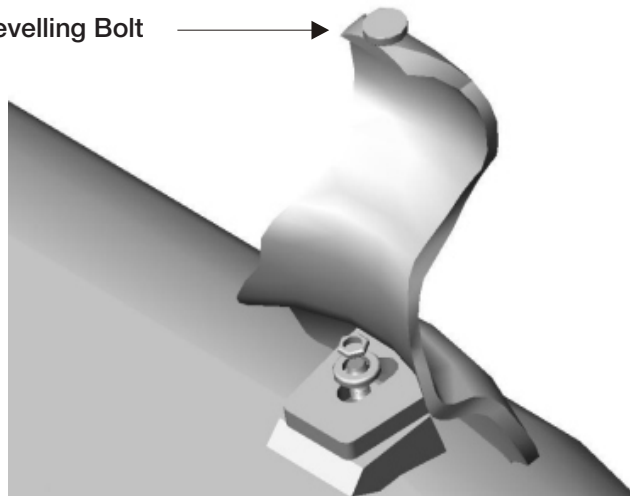
## Bathtub Installation

1. Prior to lining the floor it is important to ensure that additional supports are placed in the floor in the necessary positions if required and that the waste piping has been installed in position to suit the chosen waste/trap.

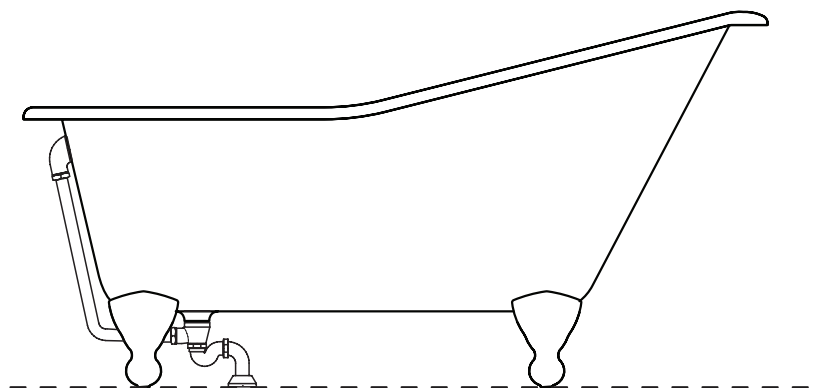


2. Once the floor has been lined, place the bath down in the desired position, then ensure the bath is sitting level by adjusting the leveling bolts.

Levelling Bolt



3. Finally, fit the bath off with chosen the waste, overflow and trap.



V 25/01/2024

Distributed by:

**Plumblīne**

T 04 568 9898 E [sales@plumblīne.co.nz](mailto:sales@plumblīne.co.nz)  
[www.plumblīne.co.nz](http://www.plumblīne.co.nz)