



M440

M442

Page 1



M307

M308

Page 4



CB450  
M100  
M105  
M106



CB452  
CB453  
M100  
M105  
M106

Page 2

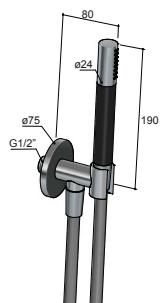
Page 3



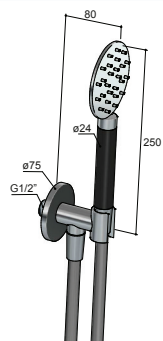
M437

M438

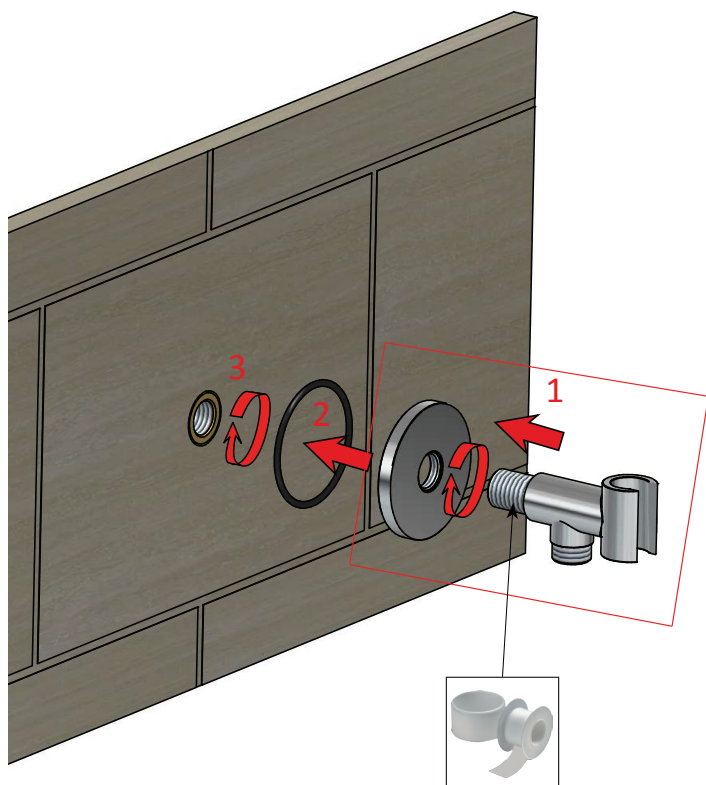
Page 5-6

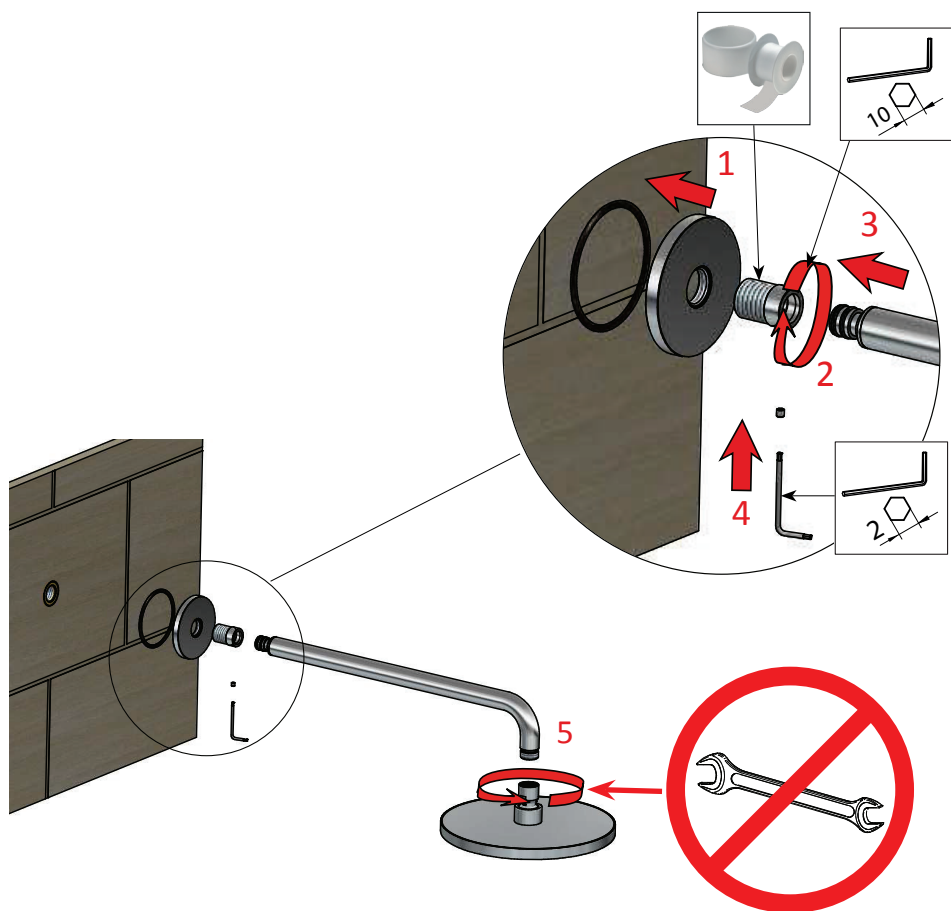
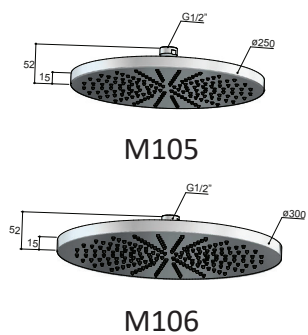
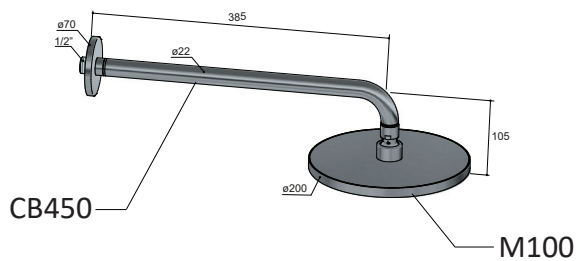


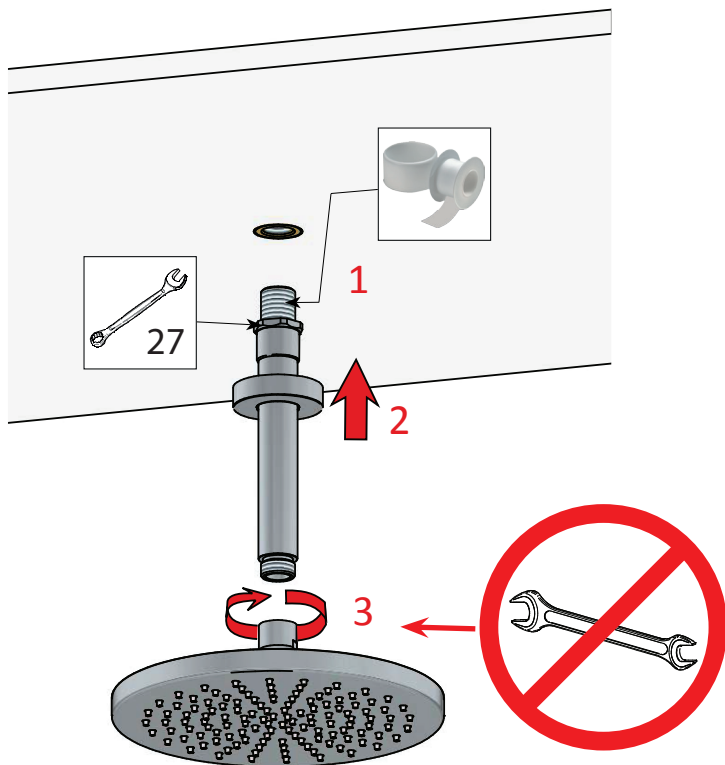
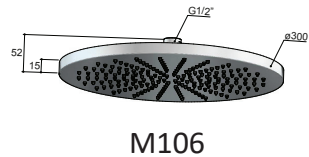
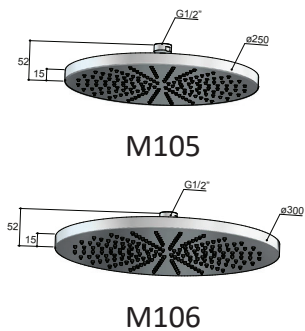
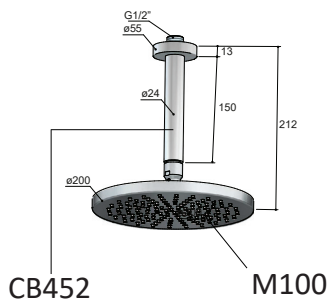
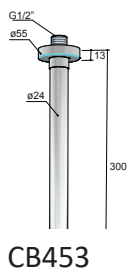
M440

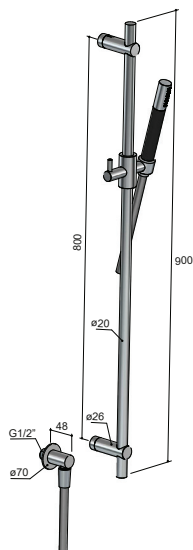


M442

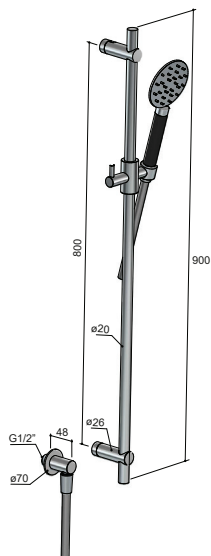




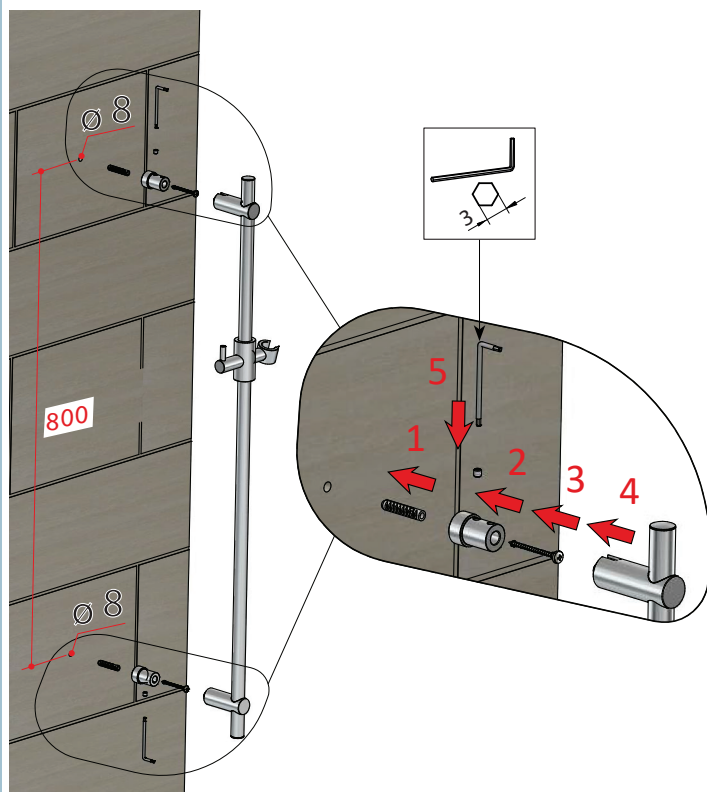




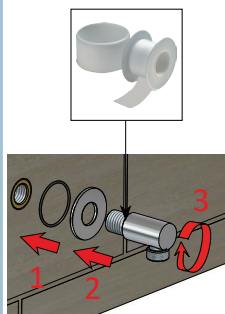
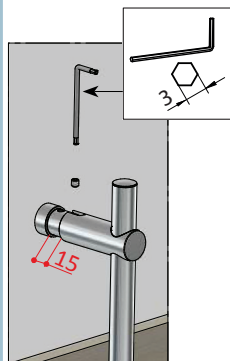
M307



M308

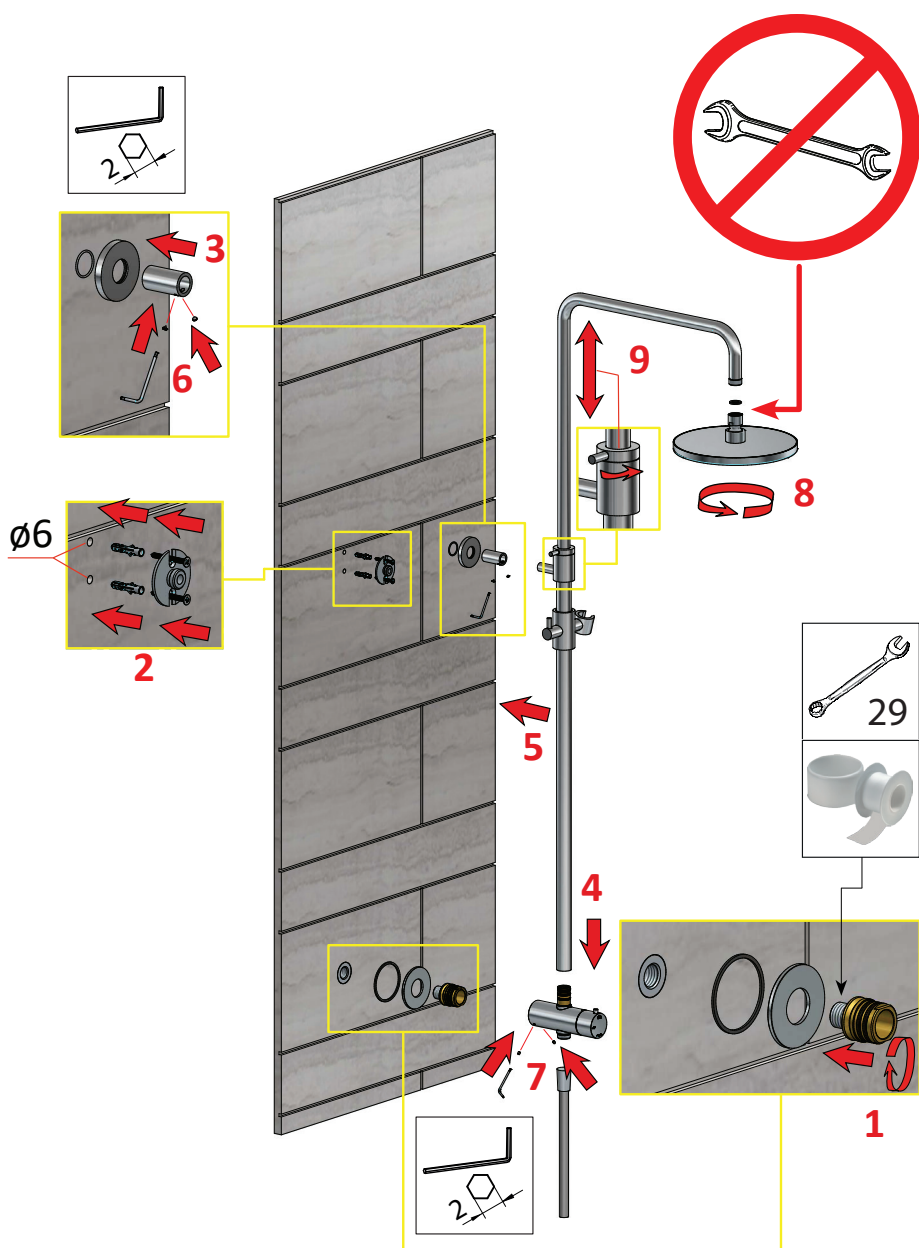


# INSTALLATION ABOVE TILES

















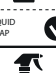






## 5





# CLEANING

	✓			✗		WARNING
<b>CR</b> <b>CHROME</b>	 WATER ✓	 LIQUID SOAP ✓	 SMOOTH CLOTH ✓	 ABRASIVE SPONGE ✗	 ACID/ABRASIVE DETERGENT ✗	Inoxidizable plated finish
<b>GN</b> <b>BRUSHED NICKEL</b>	 WATER ✓	 LIQUID SOAP ✓	 SMOOTH CLOTH ✓	 ABRASIVE SPONGE ✗	 ACID/ABRASIVE DETERGENT ✗	Inoxidizable plated finish Avoid citrus based cleaners
<b>BB</b> <b>BRUSHED BRASS</b>	 WATER ✓	 LIQUID SOAP ✓	 SMOOTH CLOTH ✓	 ABRASIVE SPONGE ✗	 ACID/ABRASIVE DETERGENT ✗	Natural metal finish: patina will form over time Avoid citrus based cleaners
<b>AB</b> <b>AGED BRASS</b>	 WATER ✓	 LIQUID SOAP ✓	 SMOOTH CLOTH ✓	 ABRASIVE SPONGE ✗	 ACID/ABRASIVE DETERGENT ✗	Aged metal finish: patina will form over time Avoid citrus based cleaners
<b>WH</b> <b>MATT WHITE</b>	 WATER ✓	 LIQUID SOAP ✓	 SMOOTH CLOTH ✓	 ABRASIVE SPONGE ✗	 ACID/ABRASIVE DETERGENT ✗	Varnished finish: subject to surface scratches if not properly handled Avoid citrus based cleaners
<b>BL</b> <b>MATT BLACK</b>	 WATER ✓	 LIQUID SOAP ✓	 SMOOTH CLOTH ✓	 ABRASIVE SPONGE ✗	 ACID/ABRASIVE DETERGENT ✗	Varnished finish: subject to surface scratches if not properly handled Avoid citrus based cleaners
<b>AI</b> <b>AGED IRON</b>	 WATER ✓	 LIQUID SOAP ✓	 SMOOTH CLOTH ✓	 ABRASIVE SPONGE ✗	 ACID/ABRASIVE DETERGENT ✗	Plated finish: subject to surface scratches if not properly handled Avoid citrus based cleaners
<b>MGP</b> <b>MATT GUNMETAL PVD</b>	 WATER ✓	 LIQUID SOAP ✓	 SMOOTH CLOTH ✓	 ABRASIVE SPONGE ✗	 ACID/ABRASIVE DETERGENT ✗	Inoxidizable PVD finish Avoid citrus based cleaners
<b>MCP</b> <b>MATT CHAMPAGNE PVD</b>	 WATER ✓	 LIQUID SOAP ✓	 SMOOTH CLOTH ✓	 ABRASIVE SPONGE ✗	 ACID/ABRASIVE DETERGENT ✗	Inoxidizable PVD finish Avoid citrus based cleaners
<b>BBP</b> <b>BRUSHED BRASS PVD</b>	 WATER ✓	 LIQUID SOAP ✓	 SMOOTH CLOTH ✓	 ABRASIVE SPONGE ✗	 ACID/ABRASIVE DETERGENT ✗	Inoxidizable PVD finish Avoid citrus based cleaners
<b>BZP</b> <b>BRUSHED BRONZE PVD</b>	 WATER ✓	 LIQUID SOAP ✓	 SMOOTH CLOTH ✓	 ABRASIVE SPONGE ✗	 ACID/ABRASIVE DETERGENT ✗	Inoxidizable PVD finish Avoid citrus based cleaners
<b>TB</b> <b>TUSCAN BRONZE</b>	 WATER ✓	 LIQUID SOAP ✓	 SMOOTH CLOTH ✓	 ABRASIVE SPONGE ✗	 ACID/ABRASIVE DETERGENT ✗	Varnished finish: subject to surface scratches if not properly handled Avoid citrus based cleaners