

INSTALLATION INSTRUCTIONS

S10 SLIM FULL FRAME INWALL CISTERN

SPS100FF

progetto
DESIGN COLLECTION



INSTALLER PLEASE NOTE

This product must be installed by a qualified plumber. Read all installation instructions carefully before commencing installation.

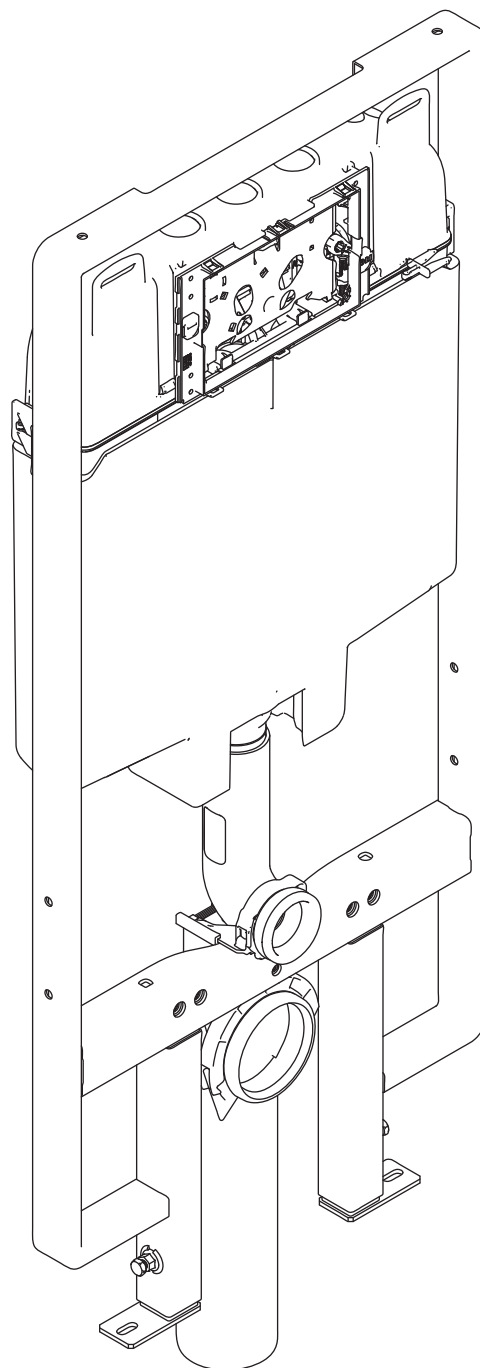
Careful attention must be given to the dimensions of pan and plumbing connections, finished floor heights, finished wall thickness and available space in wall.

Special attention must also be given to the following:

1. The minimum wall lining thickness required - refer page 3.
2. Avoid using the tile box when just using plasterboard to line the wall.
3. Because the weight of a wall hung toilet pan can crush the wall lining if a plaster board is used, wall hung pans must only be installed against a cement based non-compressible wall lining.
4. Front face of frame for wall hung pans must be installed flush with front face of timber framing.
5. Pipeline must be flushed to clear debris before connecting to cistern.
6. Cistern operation must be tested before wall covering is finished.
7. After testing ensure stopcock is fully closed and cistern is emptied.

Water pressure must be limited to 500kpa in accordance with AS/NZS3500.

Maximum operating pressure 1000kpa



Warranty Information

For full details about our warranty visit
plumblin.co.nz/warranty-information

Distributed by:

Plumblin

T 04 568 9898 E sales@plumblin.co.nz
www.plumblin.co.nz

This exploded view diagram illustrates the assembly of a door handle. The main components are labeled as follows:

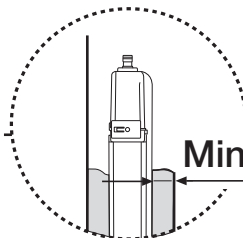
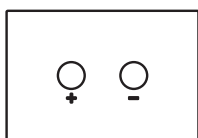
- A**: L-shaped mounting bracket
- B**: Small circular pin or washer
- C**: Small circular pin or washer
- D**: Small circular pin or washer
- E**: Small circular pin or washer
- F**: Small circular pin or washer
- G**: Small circular pin or washer
- H**: Small circular pin or washer
- I**: Small circular pin or washer
- J**: Small circular pin or washer
- K**: Small circular pin or washer
- L**: Small circular pin or washer
- M**: Small circular pin or washer
- N**: Small circular pin or washer
- O**: Small circular pin or washer
- P**: Small circular pin or washer
- Q**: Small circular pin or washer
- R**: Small circular pin or washer
- S**: Small circular pin or washer
- T**: Small circular pin or washer
- U**: Small circular pin or washer
- V**: Small circular pin or washer
- W**: Small circular pin or washer
- X**: Small circular pin or washer
- Y**: Small circular pin or washer
- Z**: Small circular pin or washer

⚠ Minimum Wall Lining Thickness

The minimum wall lining thickness is dependent on the chosen flush panel as shown below.

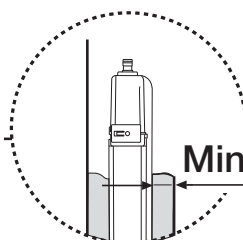
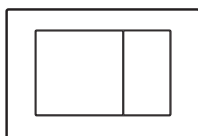


OLI Flush Panel (Pneumatic)



Min 20mm

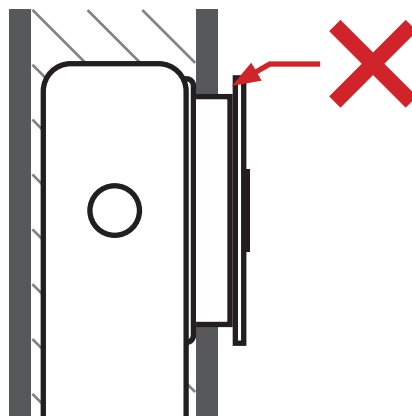
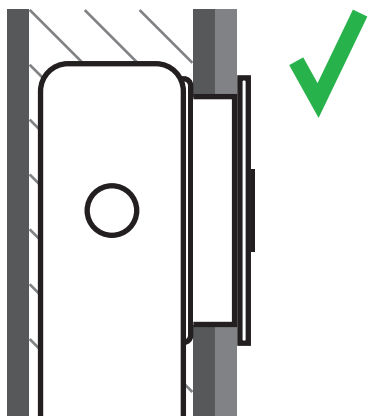
Buddy Flush Panel (Mechanical)



Min 10mm

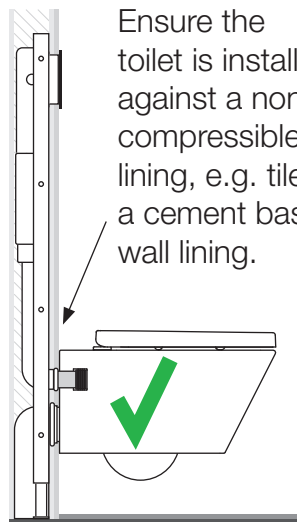
⚠ IMPORTANT

Failing to have the wall lining thickness required will cause the flush panel to protrude out from the wall upon installation.



⚠ Wall Hung Toilet Installation

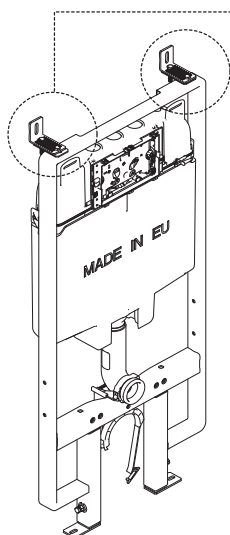
Ensure the toilet is installed against a non-compressible wall lining, e.g. tiles or a cement based wall lining.



If a plaster board wall lining is used where the pan sits, the weight of a wall hung toilet pan can crush the wall lining causing the toilet to tilt.

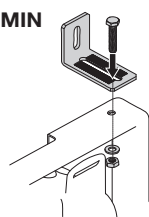


1

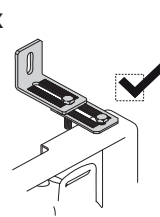


A

MIN

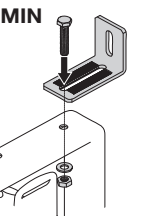


MAX

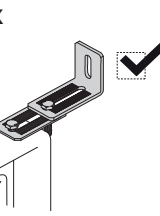


B

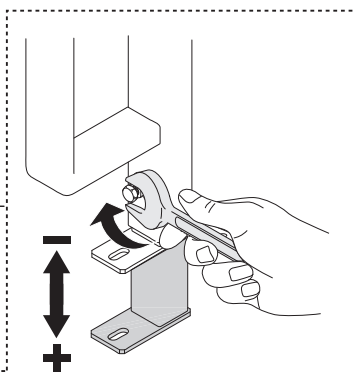
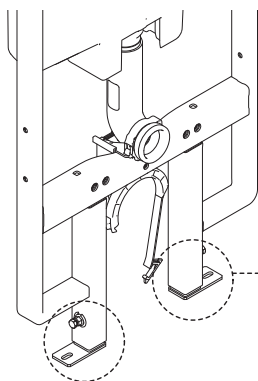
MIN



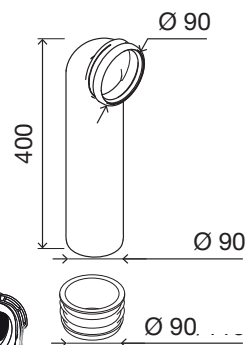
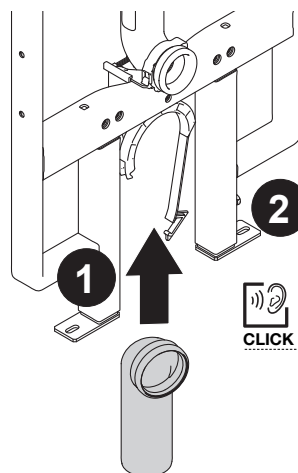
MAX

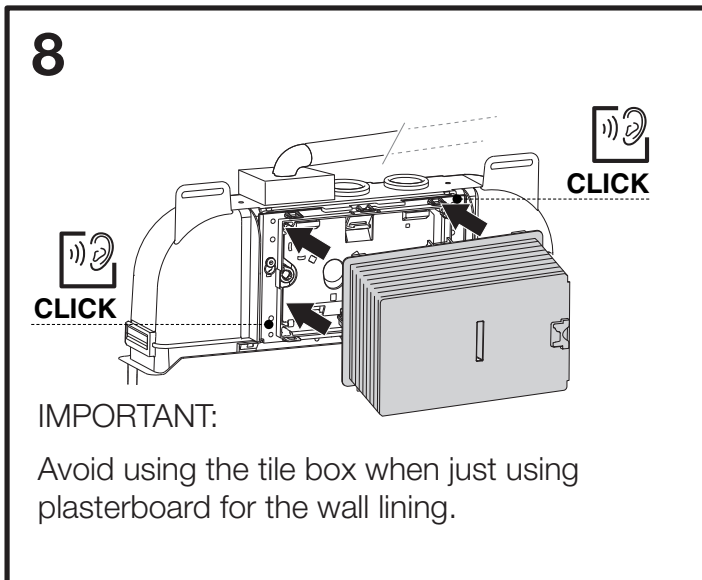
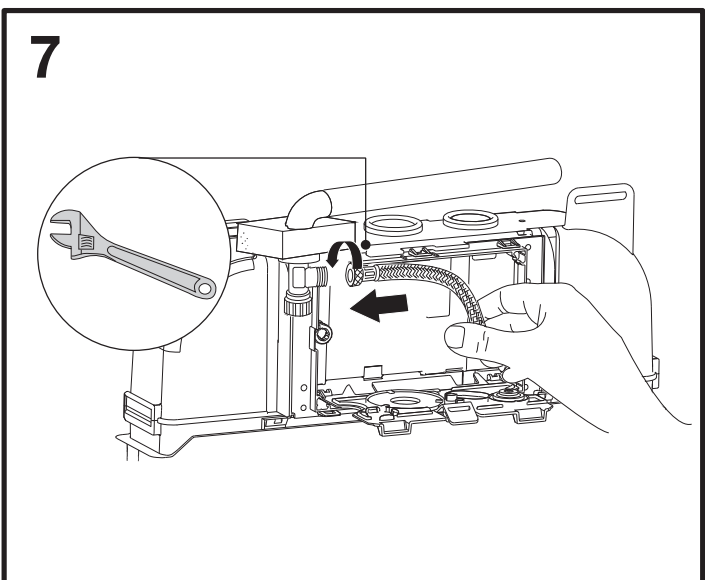
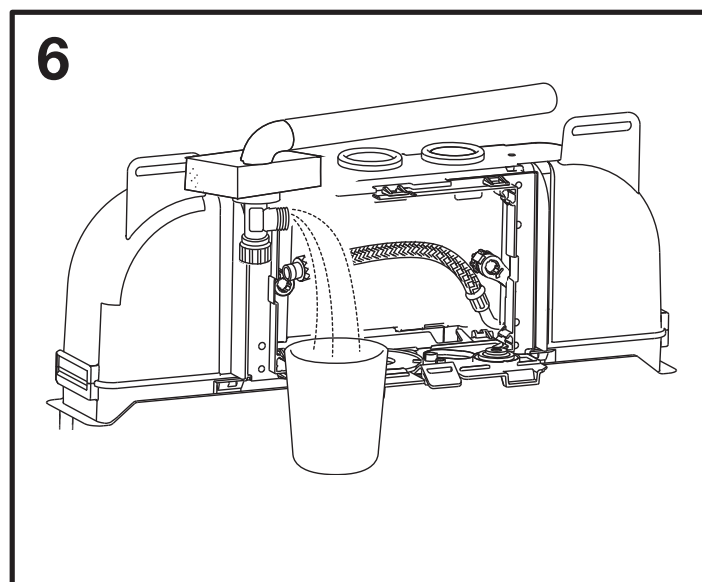
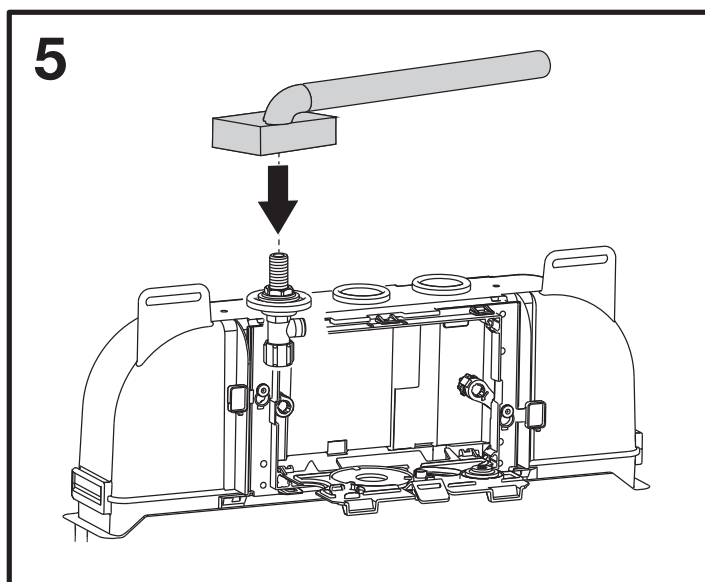
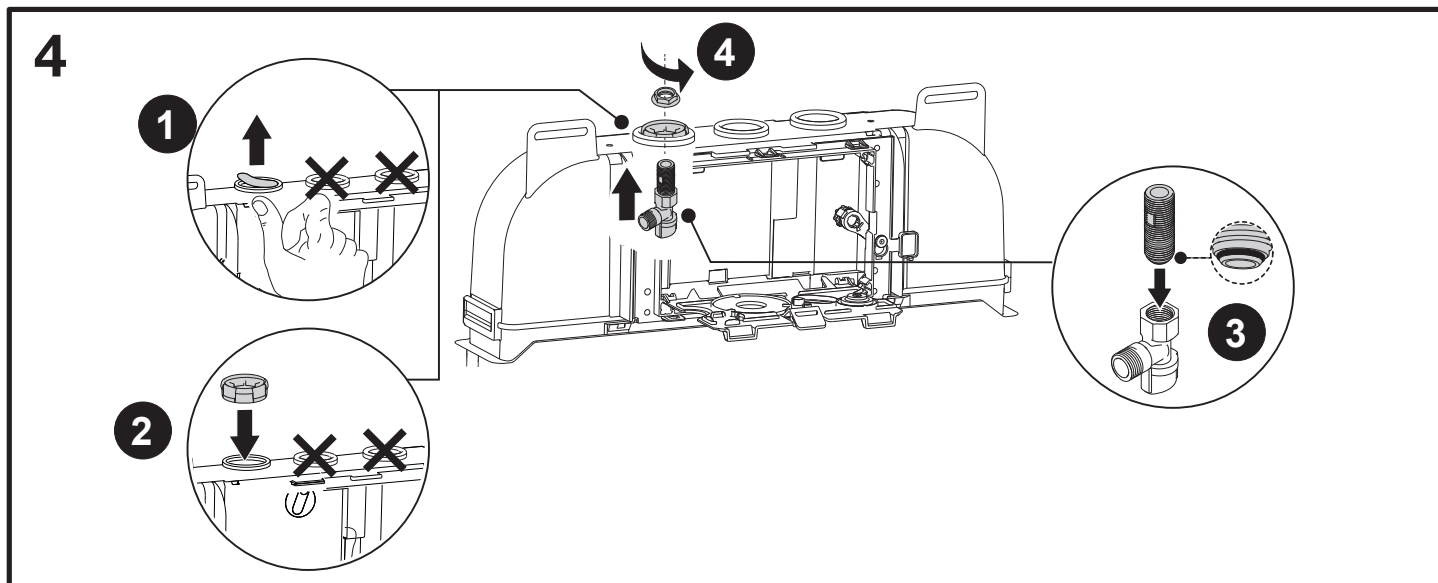


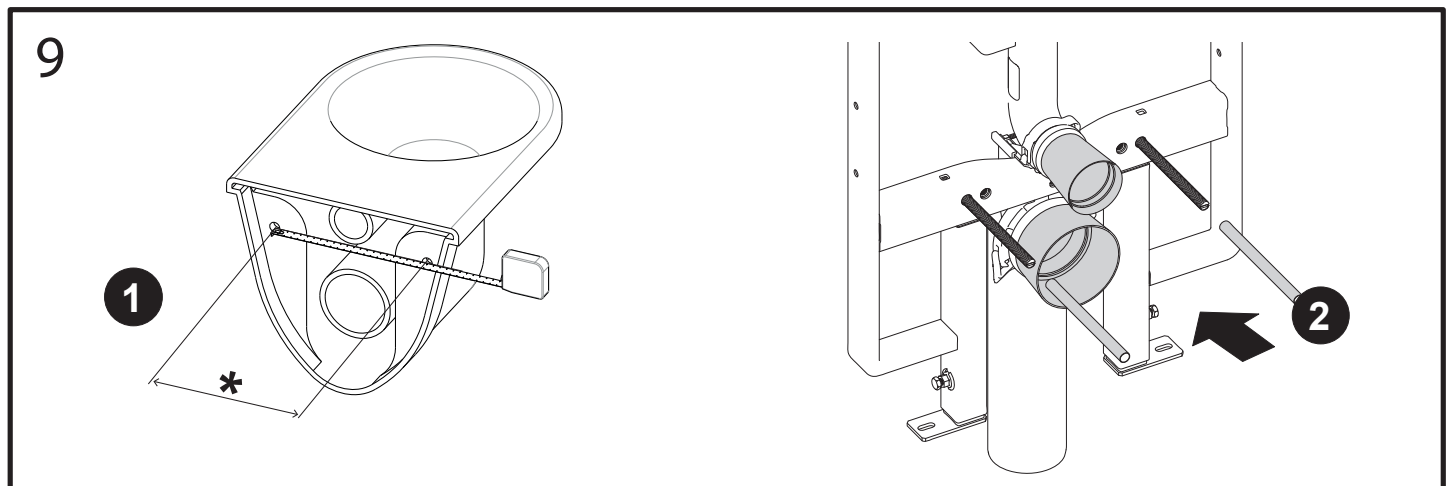
2



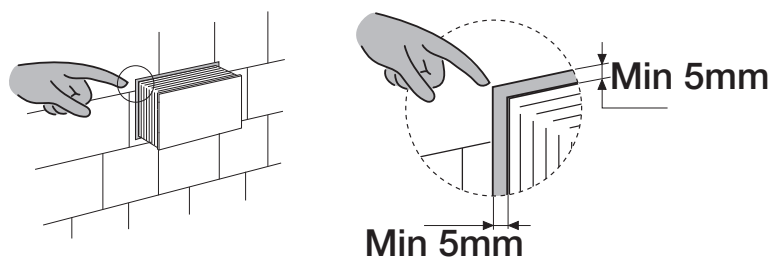
3

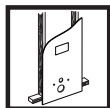




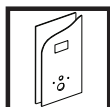
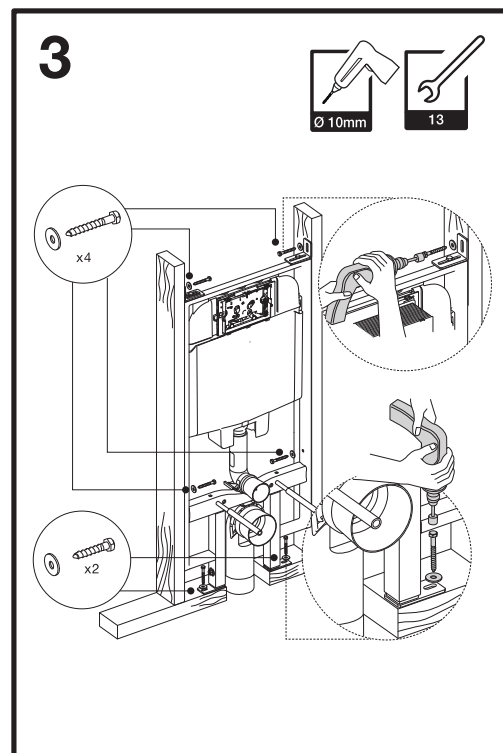
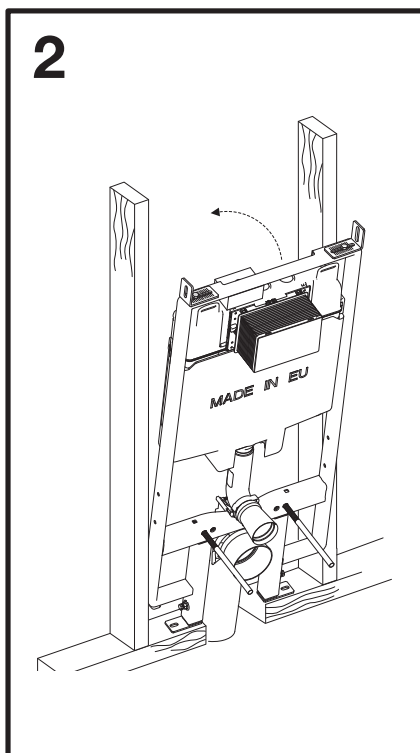
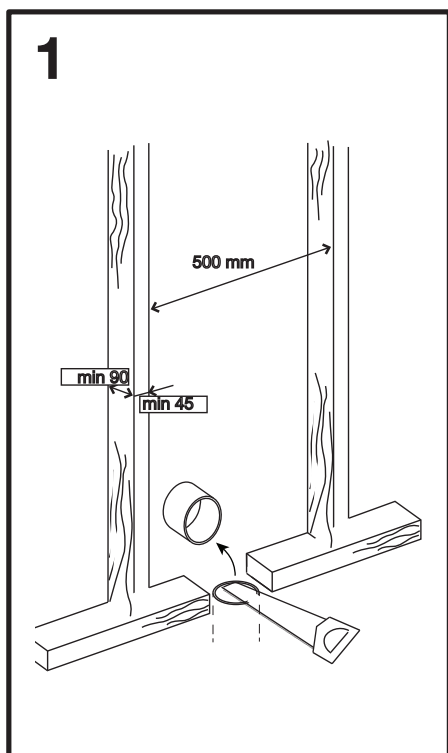


FLUSH BOX CLEARANCES

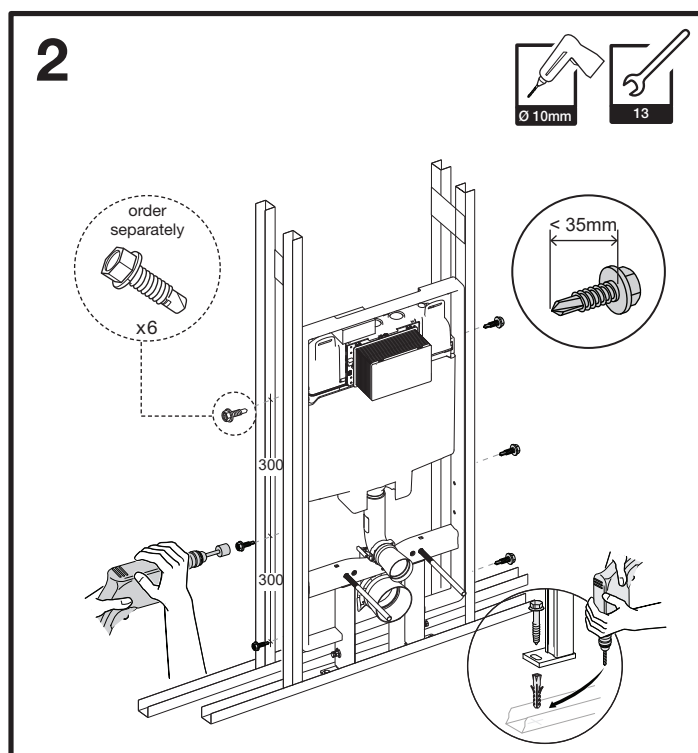
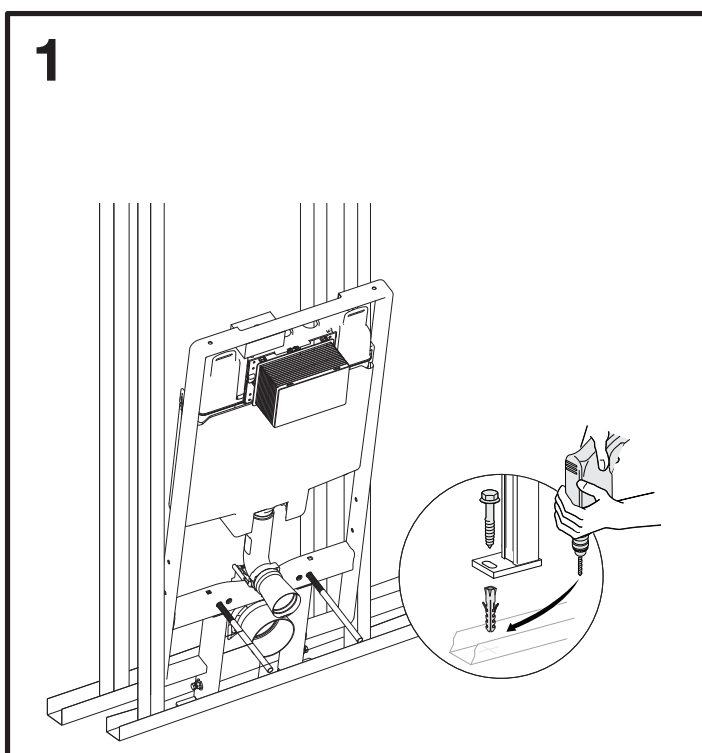




INSIDE WOODEN WALL CISTERN INSTALLATION



CISTERN INSTALLATION INSIDE STEEL FRAME WALL



OUTLET/FLUSH VALVE ADJUSTMENT

