

INSTALLATION INSTRUCTIONS

S20 SLIM INWALL CISTERN

SPS200

progetto
DESIGN COLLECTION



INSTALLER PLEASE NOTE

This product must be installed by a qualified plumber. Read all installation instructions carefully before commencing installation.

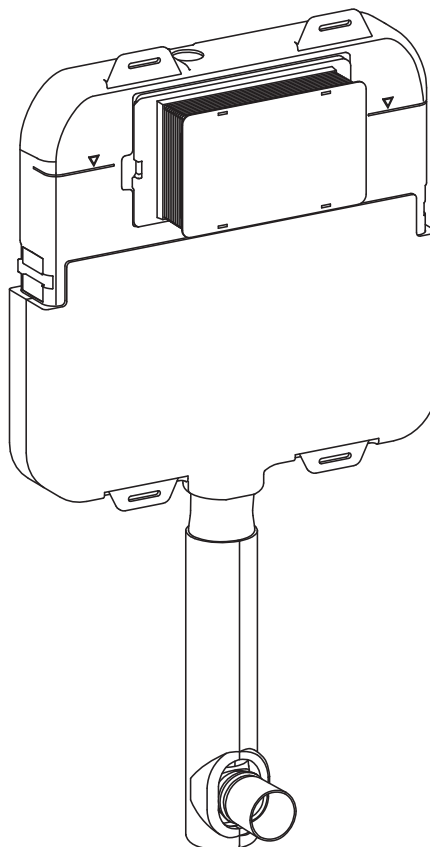
Careful attention must be given to the dimensions of pan and plumbing connections, finished floor heights, finished wall thickness and available space in wall.

Special attention must also be given to the following:

1. Minimum overall wall lining thickness is 20mm (e.g. wall lining + tile).
2. Pipeline must be flushed to clear debris before connecting to cistern.
3. Cistern operation must be tested before wall covering is finished.
4. After testing ensuring stopcock is fully closed and cistern is emptied.

Water pressure must be limited to 500kpa in accordance with AS/NZS3500.

Maximum operating pressure 1000kpa



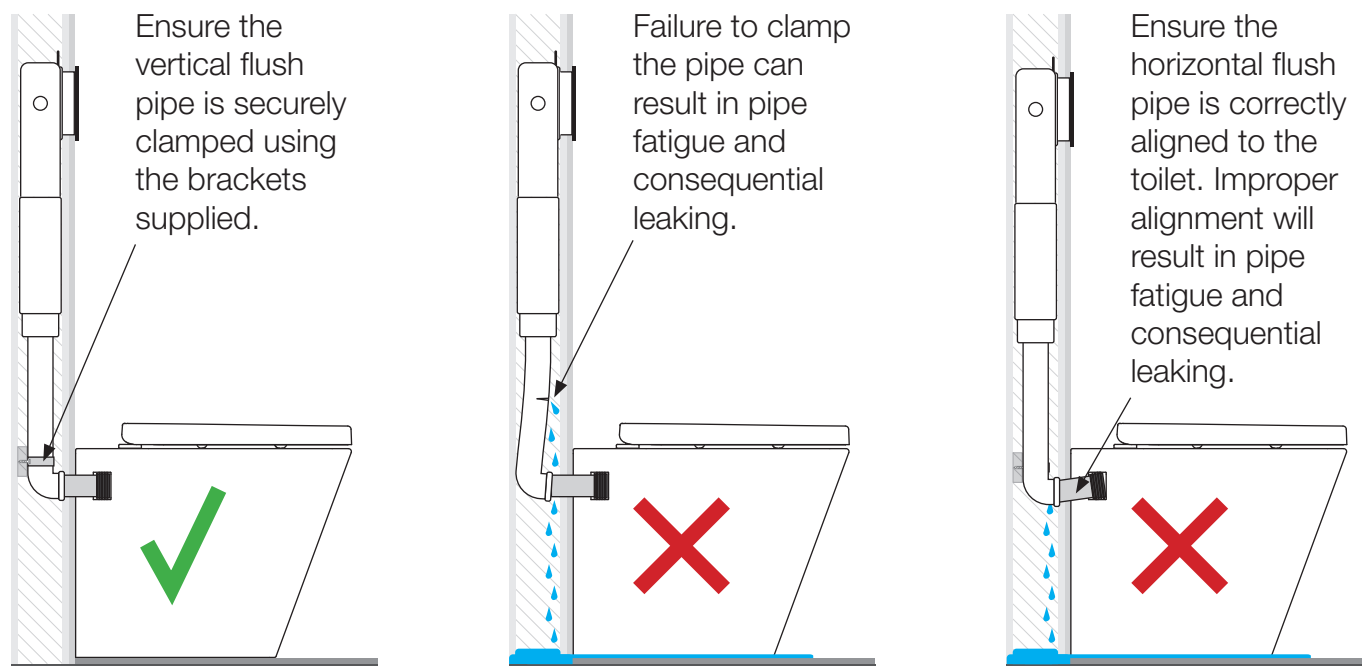
Distributed by:

Plumblīne

T 04 568 9898 E sales@plumblīne.co.nz
www.plumblīne.co.nz

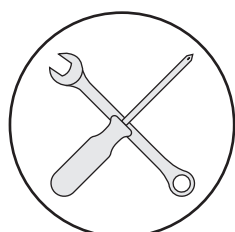
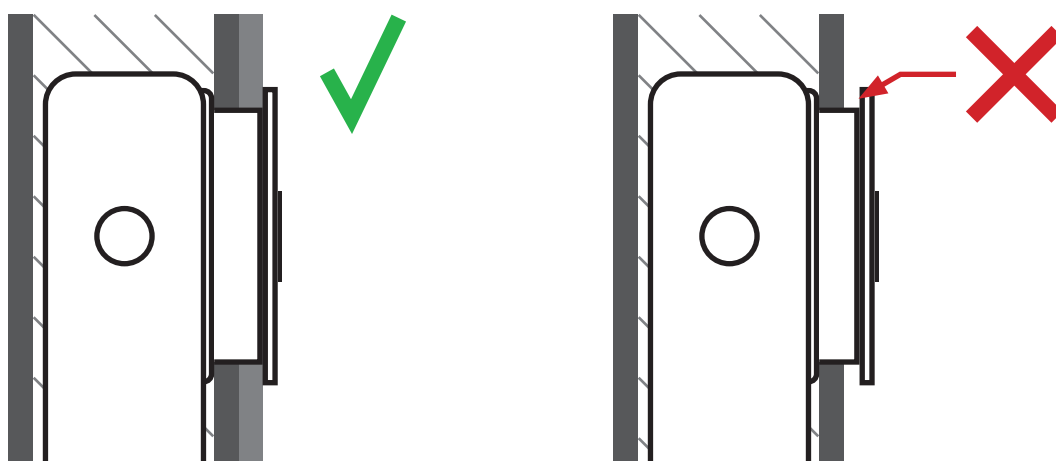
⚠ IMPORTANT! - Flush Pipe Installation

Failure to pay attention to the following points will void the warranty.



⚠ Minimum Wall Lining Thickness

The minimum overall wall lining thickness required for flush panels is 20mm. If it is less than 20mm the flush panel will protrude from the wall.



Warranty Information

For full details about our warranty visit
plumbline.co.nz/warranty-information

