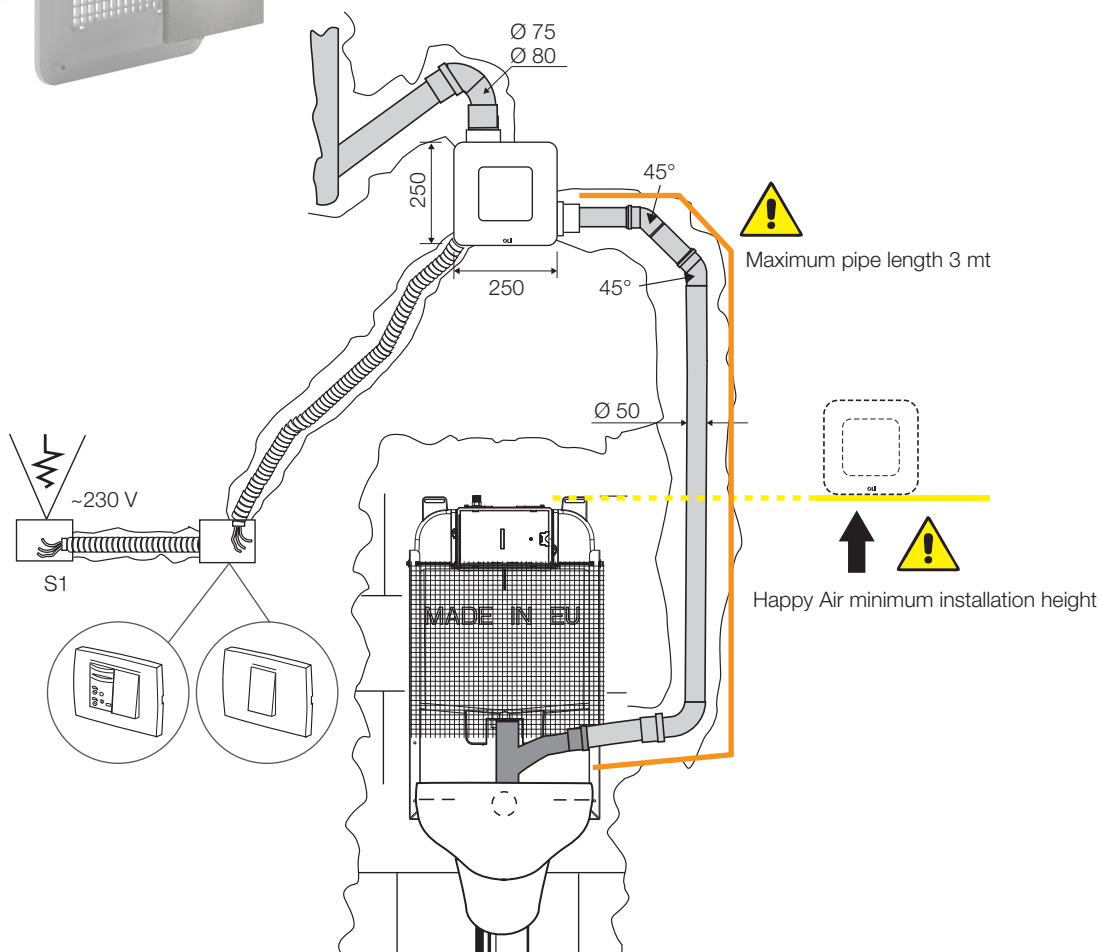
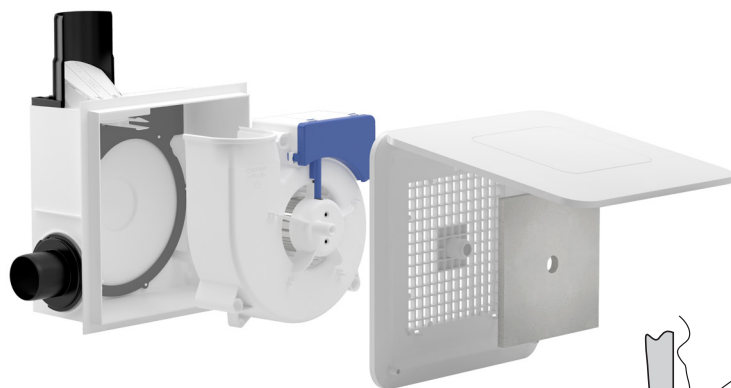
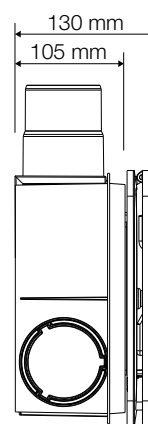
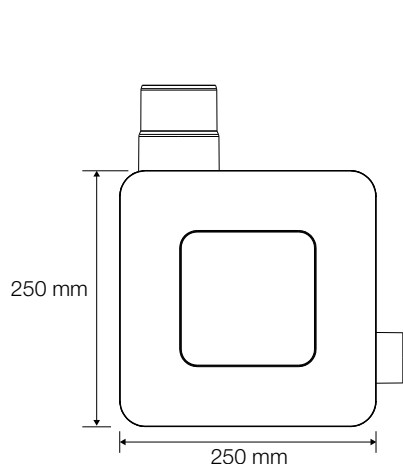


# PURE AIR KIT



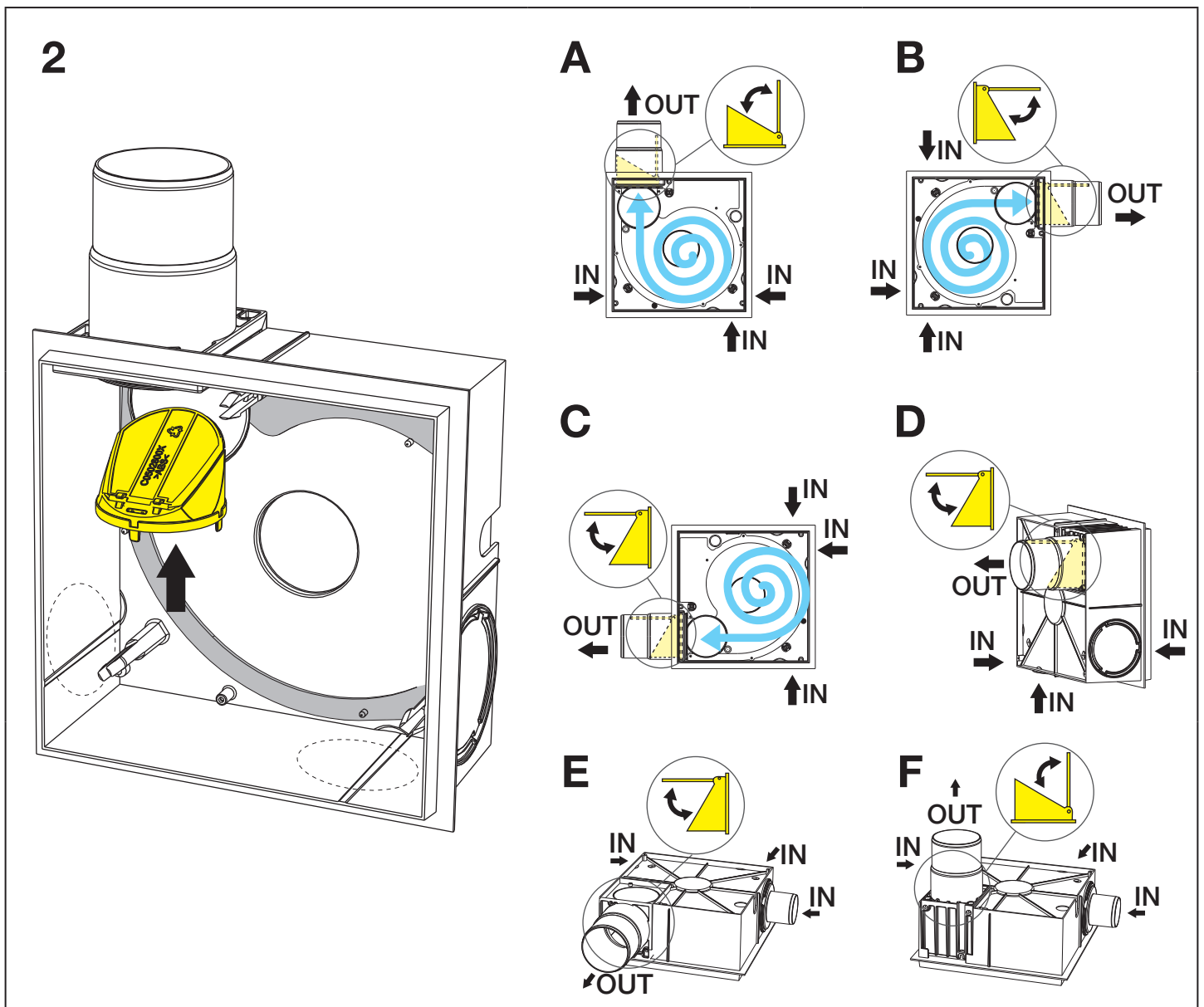
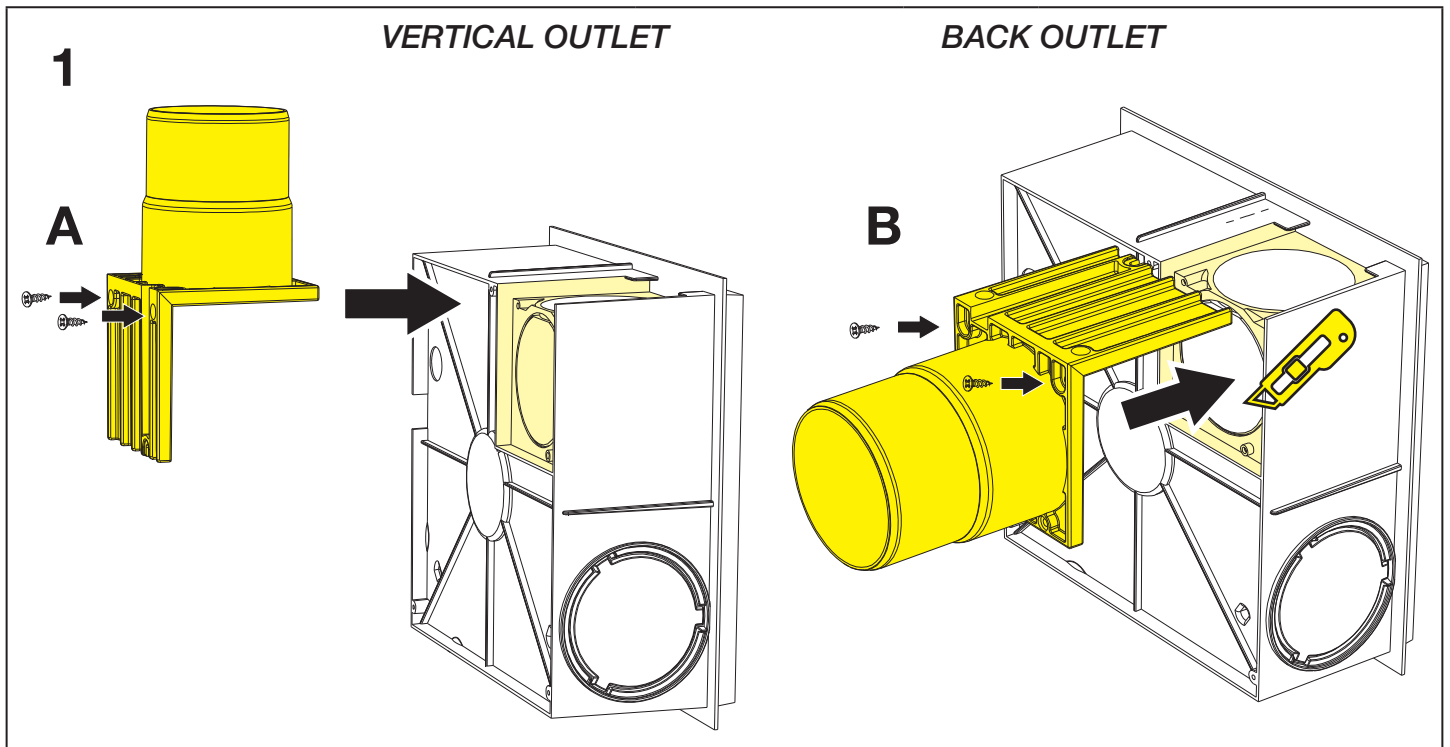
All the dimensions are in mm.

**Plumbline**

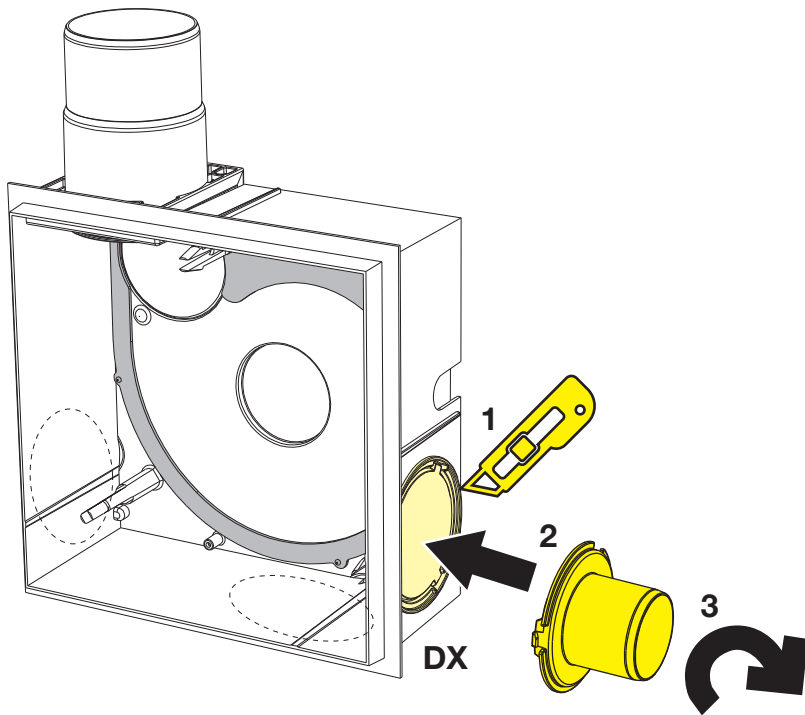
## GB - PRECAUTIONS

*This product is artistically made in conformity to applicable CEE rules and is manufactured to allow rooms and similar air change, wherever the product is installed. Please follow all these indication to ensure performance, mechanical and electrical reliability and keep always this instruction leaflet. Do not use this product for different application unless indicated by us.*

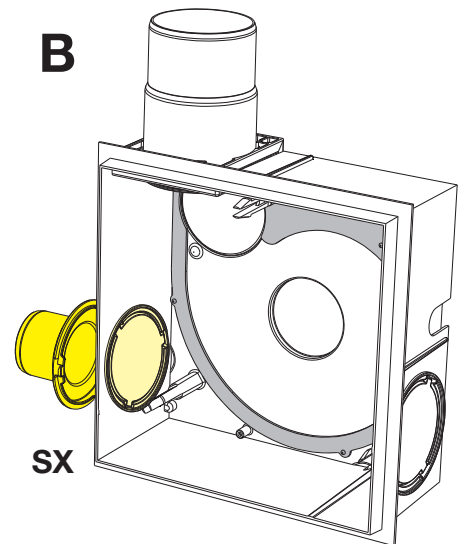
- 1. Remove packing and make sure that the appliance is undamaged.*
- 2. Check that your electrical voltage and frequency correspond to those marked on the fan rating label.*
- 3. This appliance must only be used for the purpose it was built for, i.e. air replacement for domestic and similar purposes.*
- 4. Do not operate the appliance in the presence of inflammable vapours (alcohol, petrol, etc.).*
- 5. Before carrying out any cleaning or maintenance disconnect the mains electrical supply to the fan by means of a double pole switch or remove the plug. Any maintenance and cleaning operation that requires dismounting the unit must only be done by someone who is a property qualified person.*
- 6. Make sure you have completely assembled the product before running.*
- 7. Periodically, at least once a year or more frequently in case of heavy use, remove dirt and incrustation from the impeller and motor casing and, if necessary, clean or replace the filter. It is also very important to make sure the impeller is not deformed or cracked, is able to rotate freely and without oscillation, and is properly fixed to the shaft.*
- 8. When the appliance is out of use, remove the power lead. Moreover, make potentially dangerous parts harmless, especially with regard to children who might play with appliance when it is not in use.*
- 9. Installation must be carried out by qualified personnel according to manufacturer's instructions. Incorrect installation can cause damage to people, animals or properties for which the manufacturer cannot be considered liable.*
- 10. The fan is a fixed appliance and the main supply must be done by flexible cable with plug or by a onnipolar switch with a minimum opening of the contacts of 3 mm.*
- 11. When installing the fan in a room containing a combustion heater ensure that there is sufficient air to supply both appliances. This is to ensure the efficient operation of the heater and to allow a proper operation of the fan. The fan must discharge into a single fume pipe or directly outside.*
- 12. This appliance can be used by children aged from 8 years and above and persons with reduced physical sensory or mental capabilities or lack of experience and knowledge if they have been given supervision or instruction concerning use of the appliance in a safe way and understand the hazards involved. Children shall not play with the appliance. Cleaning and user maintenance shall not be made by children without supervision.*



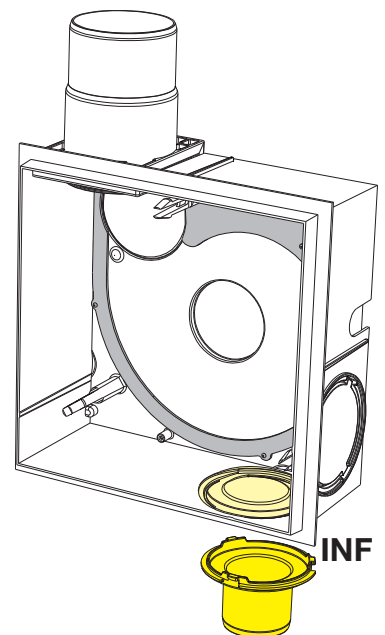
**3 A**



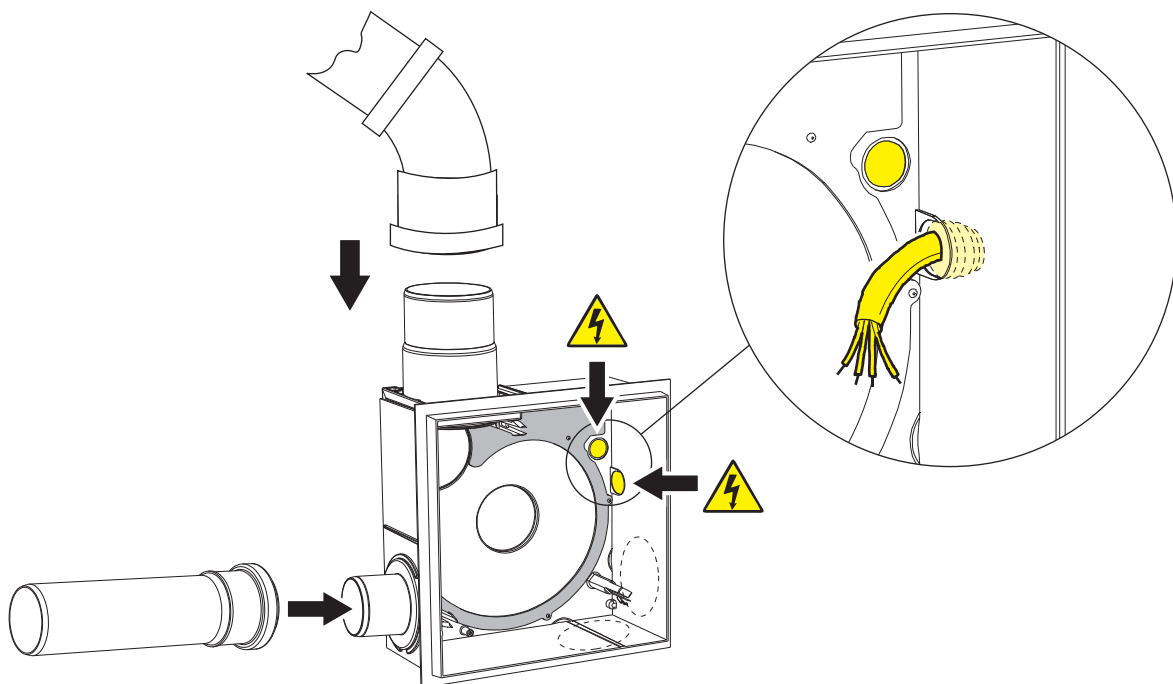
**B**



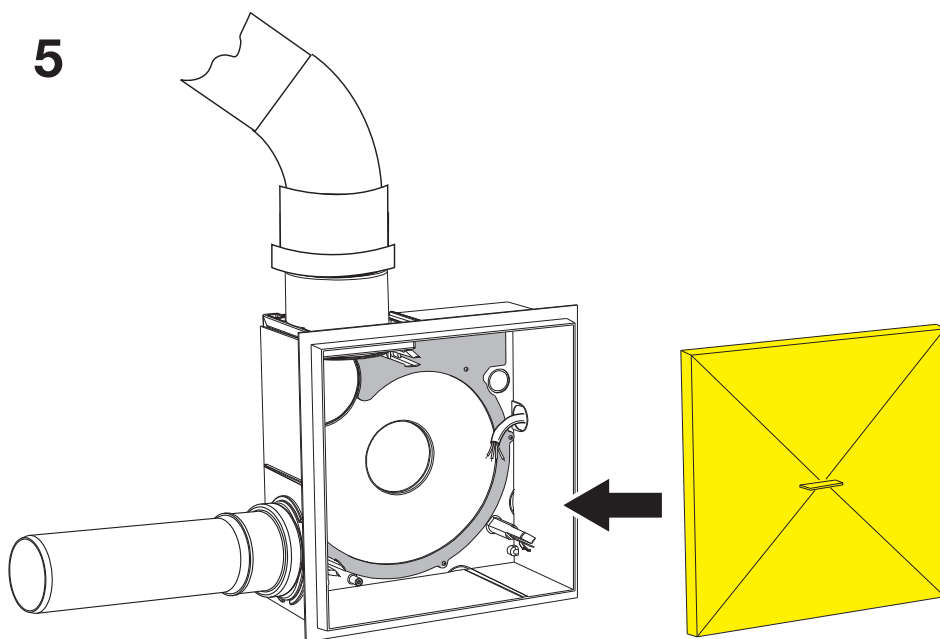
**C**



**4**

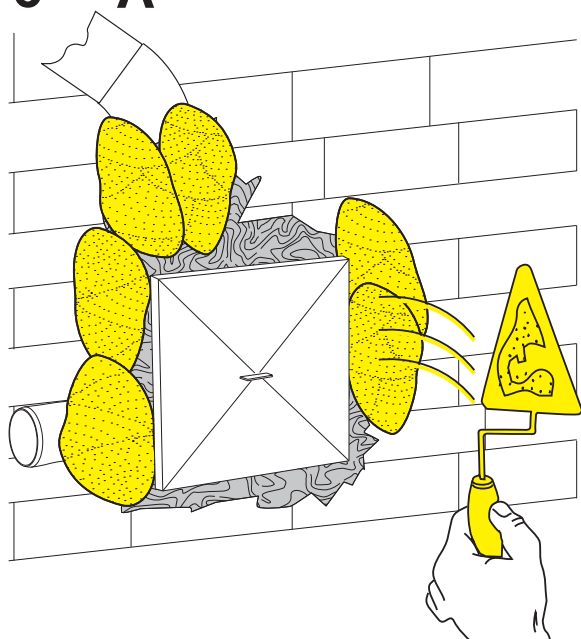


5

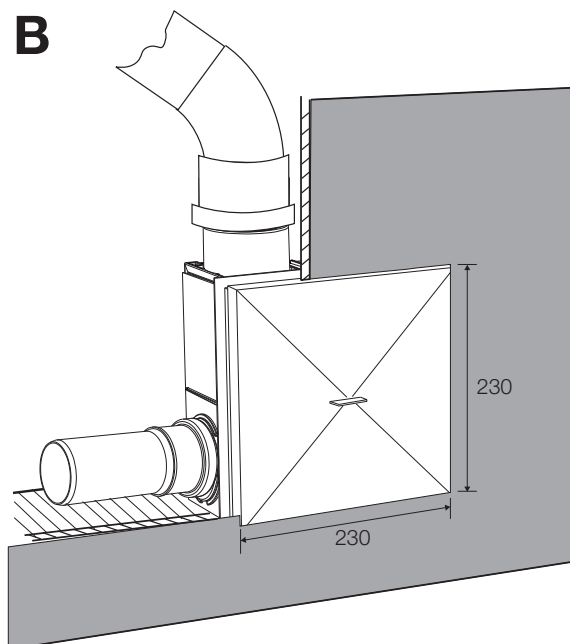


6

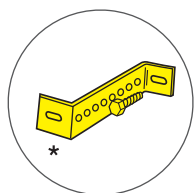
A



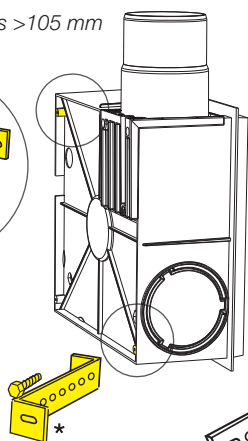
B



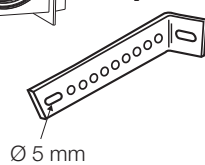
only for installations >105 mm



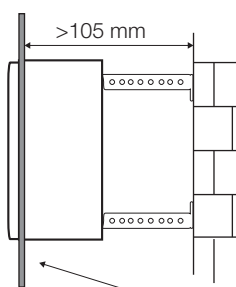
\* fixing brackets  
not included  
\*(OL0601536)



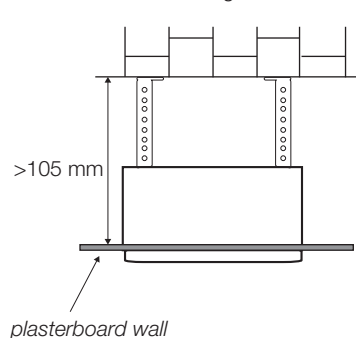
1



on the wall

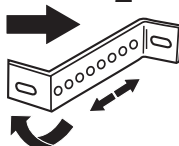


on the ceiling



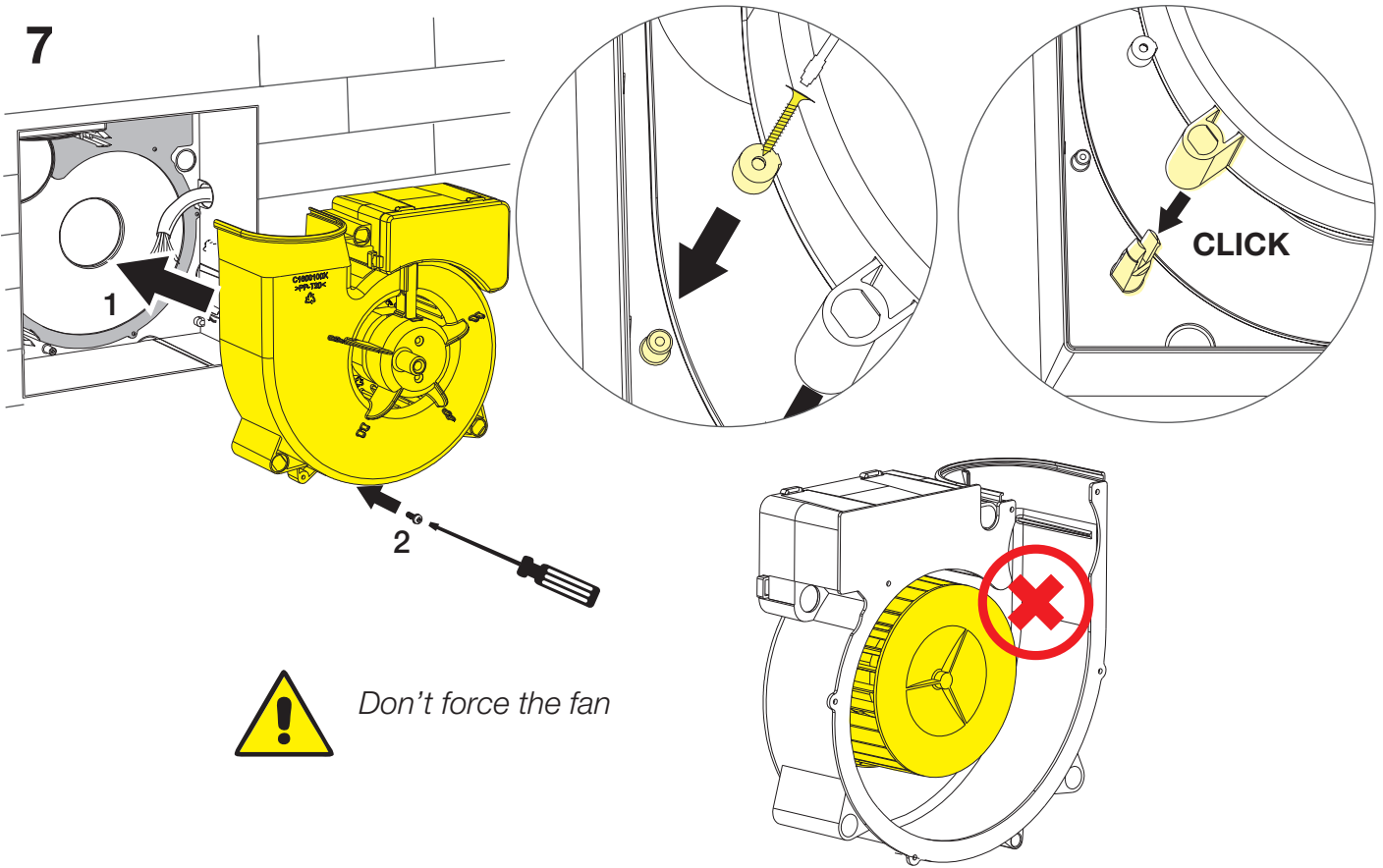
weight HAPPY AIR 1,8 kg

2

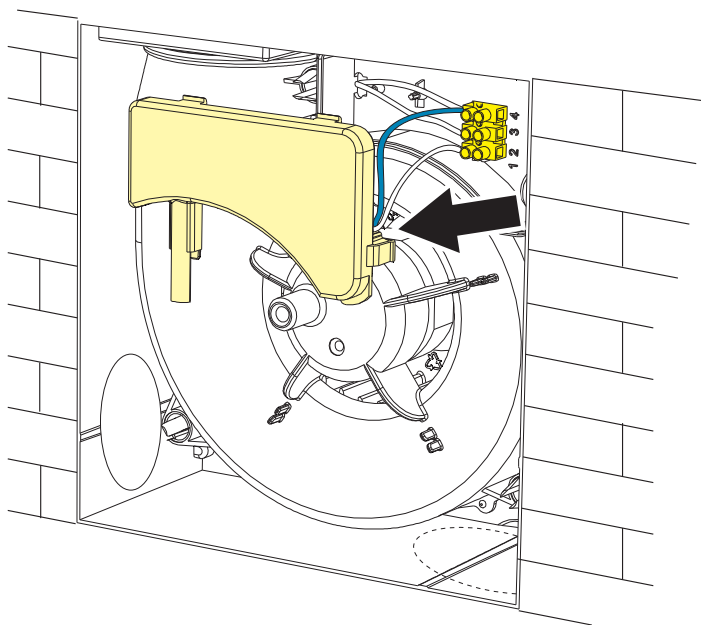


**Plumblin**

7



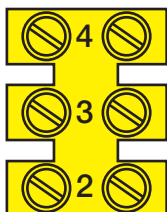
8



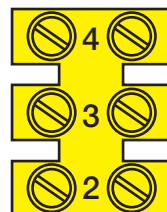
THE ELECTRICAL  
WIRING MUST BE  
CARRIED OUT ONLY  
BY HIGHLY QUALIFIED  
PERSONNEL



65 m<sup>3</sup>/h



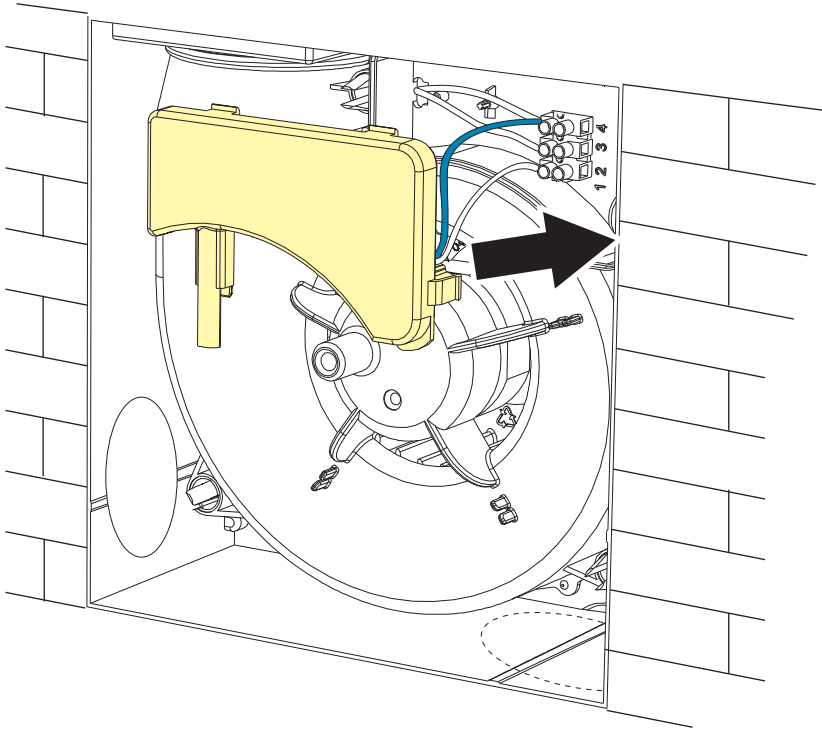
80 m<sup>3</sup>/h



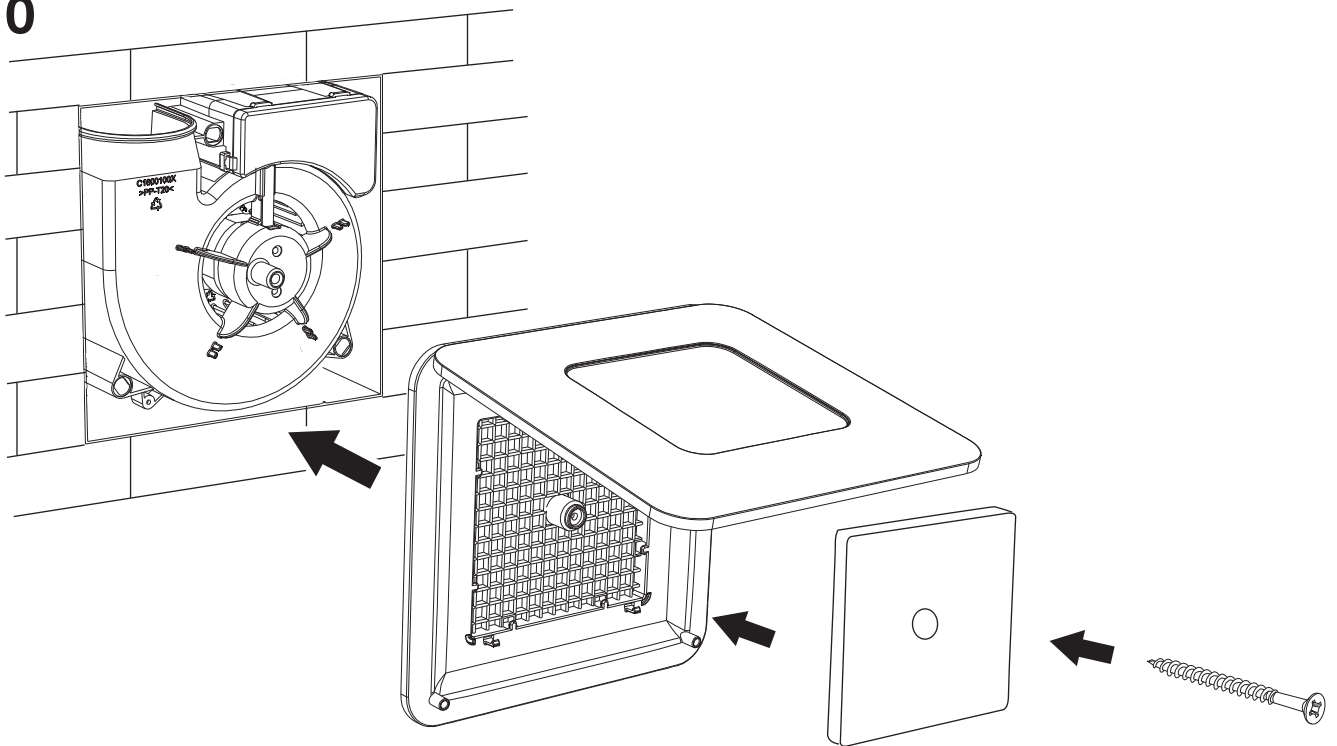
**Plumbline**



9



10



IT IS RECOMMENDED TO CLEAN  
THE FILTER EVERY MONTH TO  
KEEP THE PERFORMANCE OF  
HAPPY AIR UNALTERED.

