

# INSTALLATION INSTRUCTIONS

ECO STYLE SHOWER COLUMN | ES2550

progetto  
DESIGN COLLECTION



## IMPORTANT!

Please read these instructions **prior** to installation

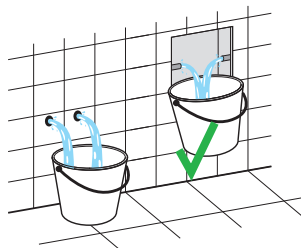
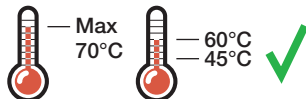
Distributed by:

**Plumblin**e

T 04 568 9898 E [sales@plumblin.co.nz](mailto:sales@plumblin.co.nz)  
[www.plumblin.co.nz](http://www.plumblin.co.nz)

## RECOMMENDATIONS FOR INSTALLATION

**⚠ ATTENTION:** Failure to follow these recommendations may void the warranty. It is recommended that a qualified, licensed tradesperson install this product.



### Water Pressure: 3 bar

Product performance cannot be guaranteed if pressure is less than 1 bar. Above 5 bar a pressure regulator must be installed. Failure to do so voids the product warranty.

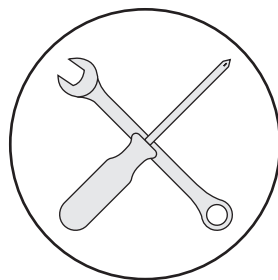
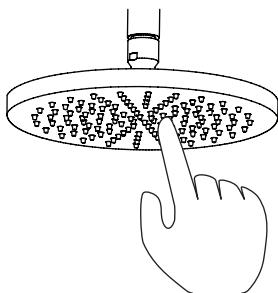
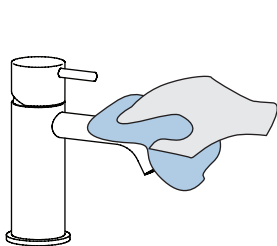
### Water Temperature: 45°-65°C

### Pre-Flush

Always flush out the pipework before connecting any tapware. Failure to do so voids the product warranty.

---

## CLEANING & MAINTENANCE



### Cleaning

Clean with warm soapy water and a smooth cloth. Avoid abrasive sponges or detergents as these will damage the finish.

### Nozzle Maintenance

To remove calcium/lime build-up on the rainhead nozzles, periodically clean them by flicking them with your finger as shown.

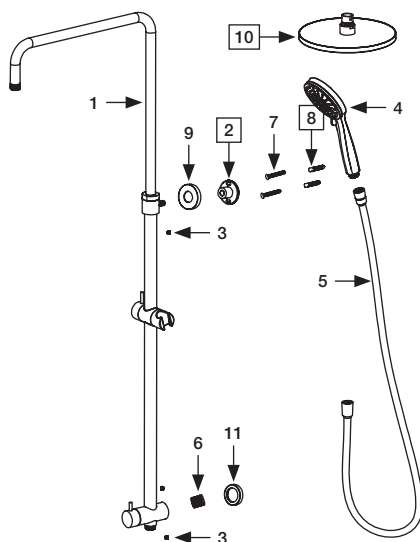
### Warranty Information

For full details about our warranty visit [plumbline.co.nz/warranty-information](https://plumbline.co.nz/warranty-information)

# COMPONENTS

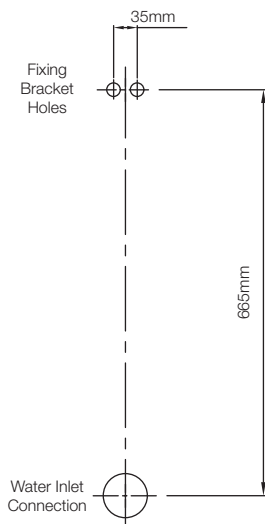
progetto

- 1 Shower Column
- 2 Fixing Bracket
- 3 M5 Grub Screw
- 4 Handpiece
- 5 Shower Hose
- 6 Water Inlet Connector
- 7 M4 Screw
- 8 Plastic Wall Plug
- 9 Fixing Bracket Flange
- 10 Rainhead
- 11 Diverter Flange

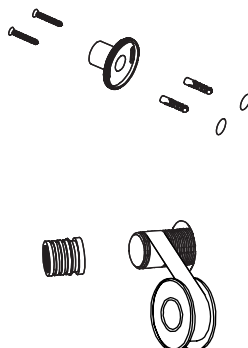


## INSTALLATION INSTRUCTIONS

- 1 Measure out for the Fixing Bracket holes as per diagram below



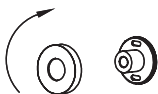
- 2 Fix the Wall Bracket using screws and wall plugs (if required). Apply thread seal tape to the male threaded wall fitting and screw on the Water Inlet Connector.



# INSTALLATION INSTRUCTIONS

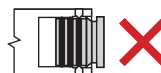
progetto

- 4 Install the Fixing Bracket Flange and the Diverter Flange



- 5 Fix the Shower Column to the Fixing Bracket and Water Inlet Connector using the M5 grub screws provided.

⚠ Ensure the Water Inlet Connector is seated properly inside the diverter body. If not seated properly the grub screws may pierce the O-rings causing it to leak.



- 6 Install the Rainhead, Shower Hose & Handpiece and set the Telescopic Riser to the preferred height.

⚠ Ensure the riser collar is tightened or the riser may move during operation.

