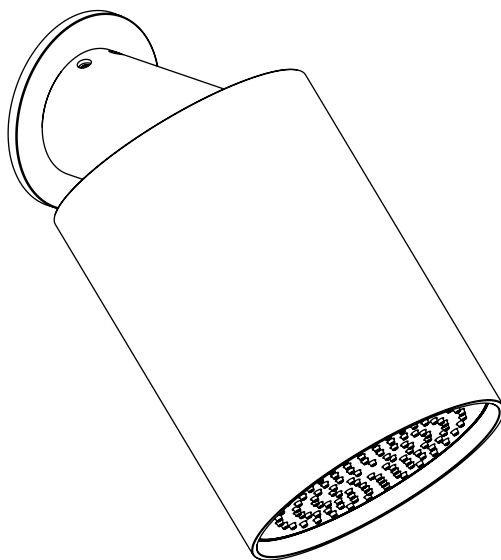


INSTALLATION INSTRUCTIONS

BUDDY 100MM WALL MOUNTED SHOWERHEAD | M471

progetto
DESIGN COLLECTION



IMPORTANT!

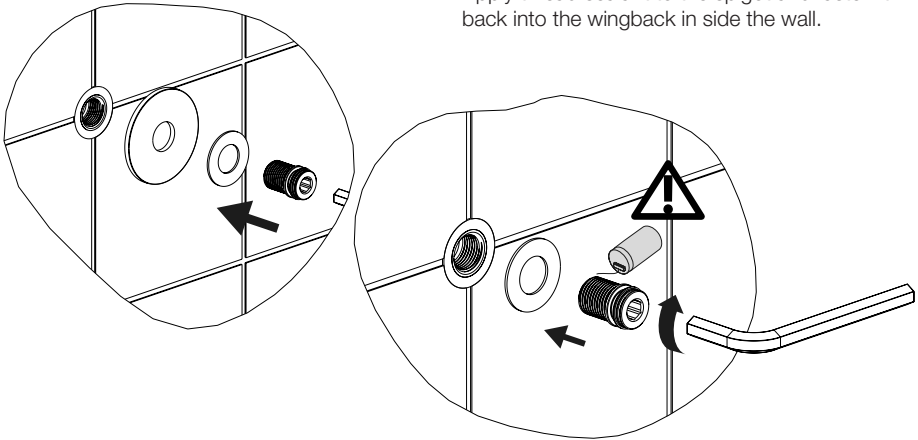
Please read these instructions **prior** to installation

Distributed by:

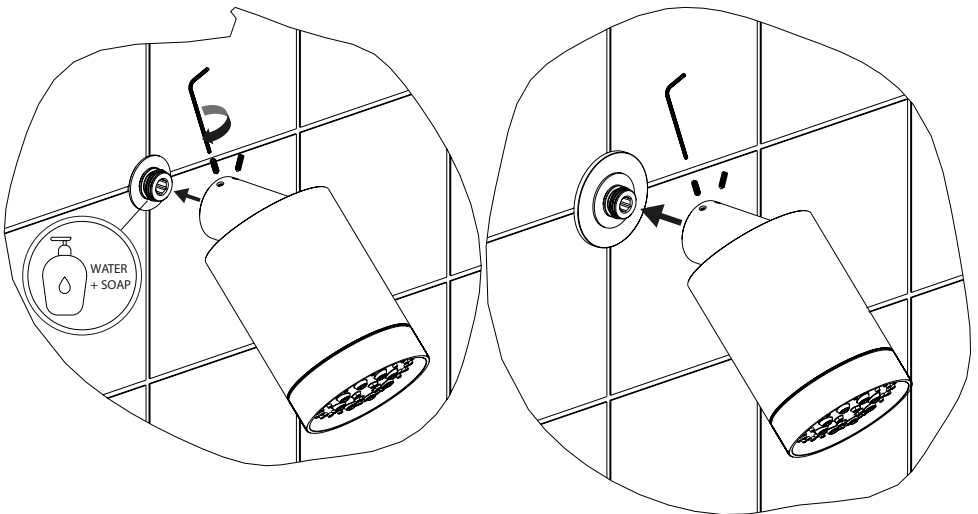
Plumbline

T 04 568 9898 E sales@plumblin.co.nz
www.plumblin.co.nz

- 1 - Apply thread sealant to the spigot and fasten it back into the wingback in side the wall.



- 2 - Apply lubricant to the o-rings on the spigot then slide the flange and showerhead on to the spigot. Insert the grub screws and tighten them to lock the showerhead onto the spigot.



Distributed by:

Plumblin

T 04 568 9898 E sales@plumblin.co.nz
www.plumblin.co.nz