

INSTALLATION INSTRUCTIONS

progetto
DESIGN COLLECTION

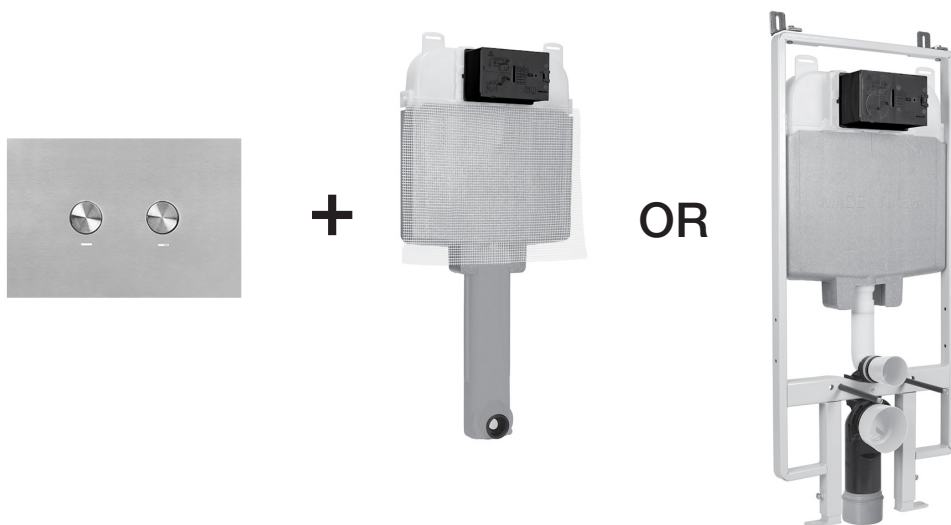
SPEEDO S10 PNEUMATIC CONVERSION KIT

SPS100PK

NOTE TO INSTALLER

When installing an Oli Flush Flush Panel with an S10 Inwall Cistern, the cistern must be converted from a mechanical to a pneumatic flush using this conversion kit.

Note - The Oli Flush Panel is only compatible with the S10 Cistern.



SCAN FOR INSTALLATION
VIDEO...



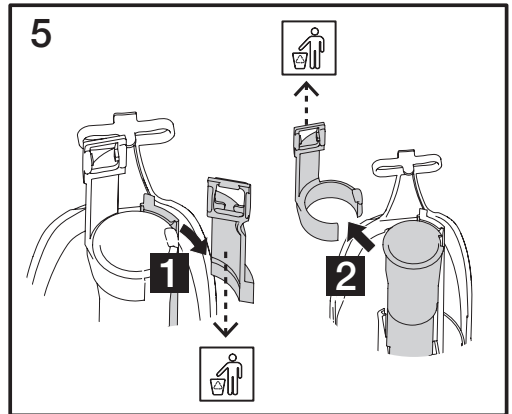
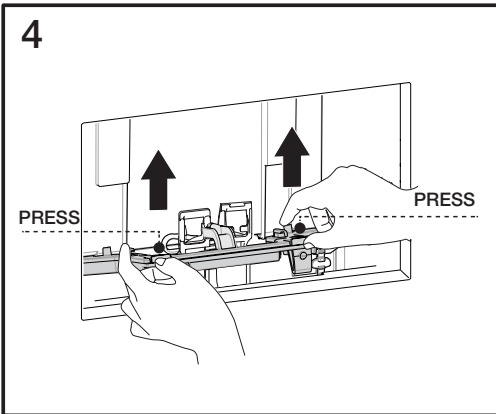
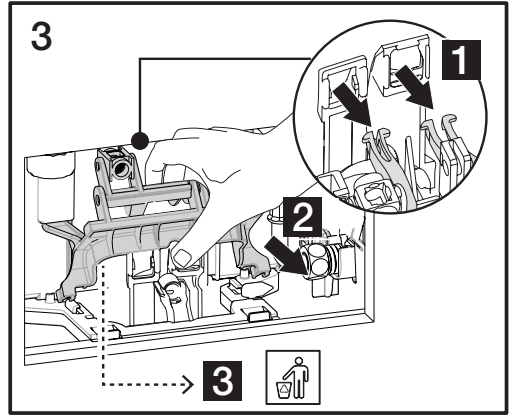
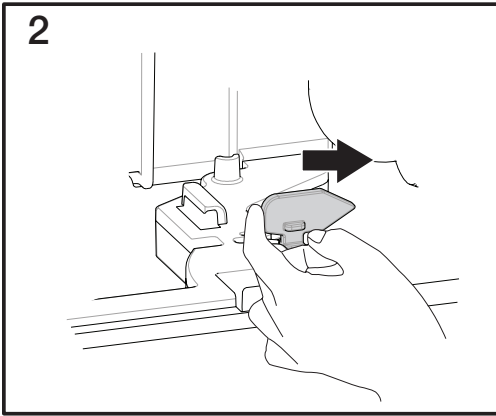
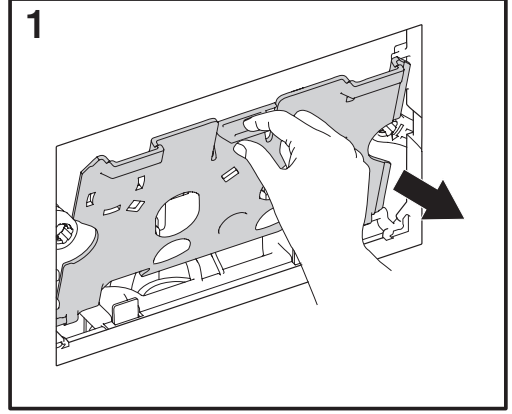
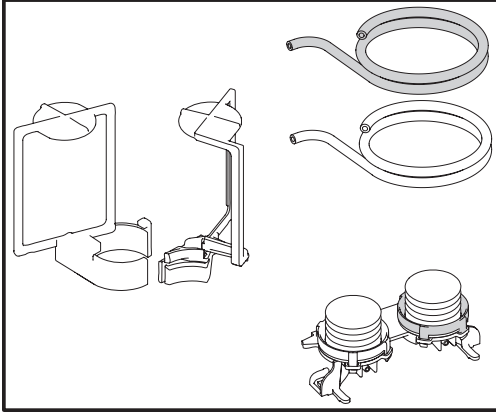
OR READ THE FOLLOWING
PAGES FOR INSTRUCTIONS



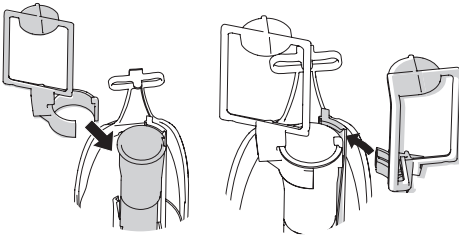
Distributed by:

Plumblīne

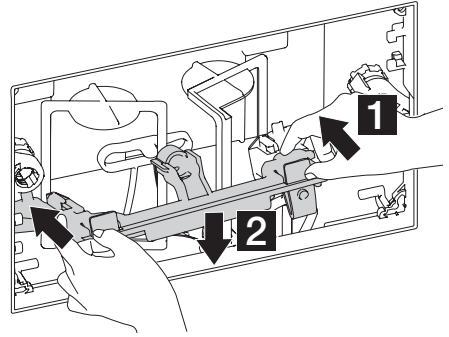
T 04 568 9898 E sales@plumblīne.co.nz
www.plumblīne.co.nz



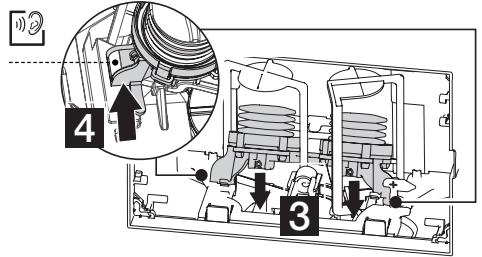
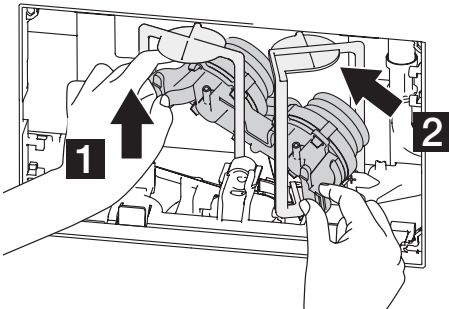
6



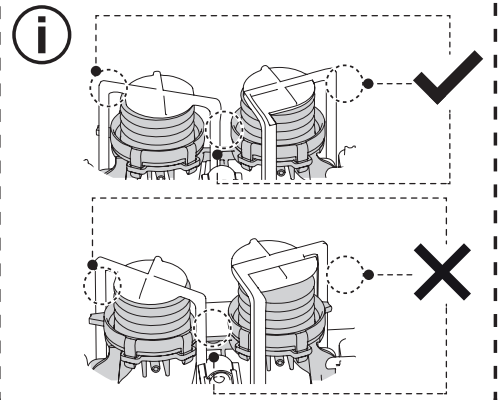
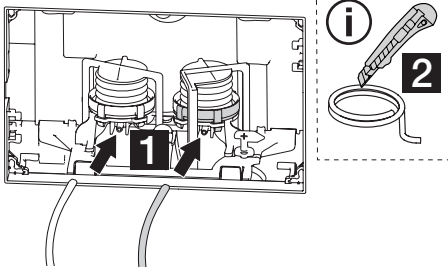
7



8



9



Distributed by:

Plumblin

T 04 568 9898 E sales@plumblin.co.nz
www.plumblin.co.nz