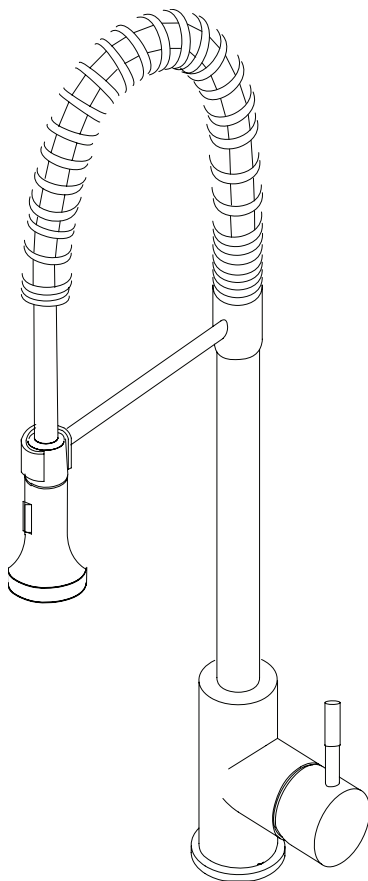


INSTALLATION INSTRUCTIONS

SWISS FLEXI SPOUT KITCHEN MIXER

SW0110.BS

progetto
DESIGN COLLECTION



IMPORTANT!

Please read these instructions **prior** to installation

Distributed by:

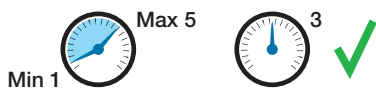
Plumblin

T 04 568 9898 E sales@plumblin.co.nz
www.plumblin.co.nz

RECOMMENDATIONS FOR INSTALLATION

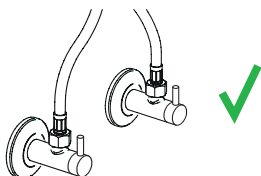


ATTENTION: Failure to follow these recommendations may void the warranty.
It is recommended that a qualified, licensed tradesperson install this product.



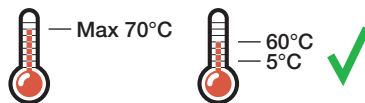
Water Pressure: 3 bar

Product performance cannot be guaranteed if pressure is less than 1 bar. Above 5 bar a pressure regulator must be installed. Failure to do so voids the product warranty.

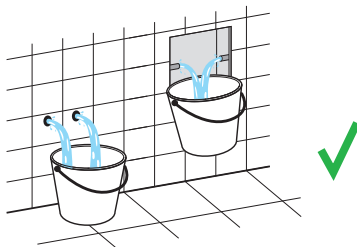


Stop Taps/Filters

Angle valves and/or filters are recommended to prevent impurities and debris entering the mixer.



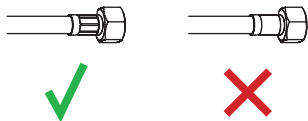
Water Temperature: 5° - 60°C



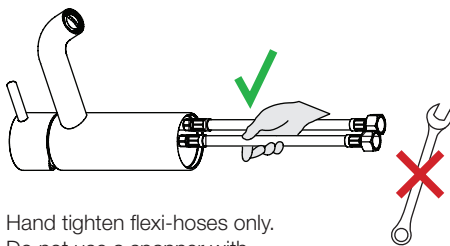
Pre-Flush

Always flush out the pipework before connecting any tapware. Failure to do so voids the product warranty.

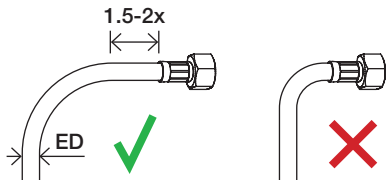
Flexible Hoses



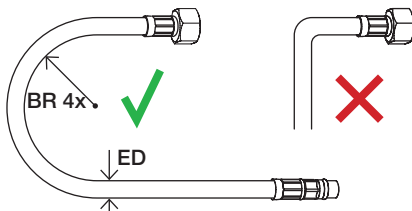
Before installation check that both end fittings of the flexible hoses are well tightened/crimped. If in doubt do not install the flexible hose.



Hand tighten flexi-hoses only. Do not use a spanner with excessive force.

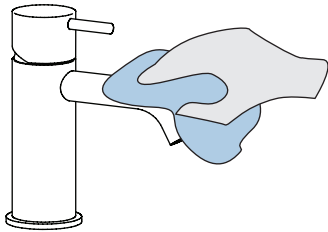


Before any bends ensure there is a straight section of the flexible hose from the hose crimp of at least 1.5-2 times the external (ED) diameter of the hose.



Flexible hose bending radius (BR) should be less than four times the external diameter (ED) of the hose. Do not install with any tension, twists, pinch points or sharp bends/kinks.

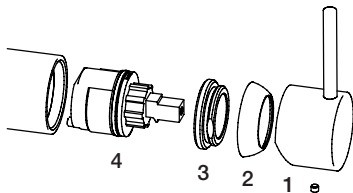
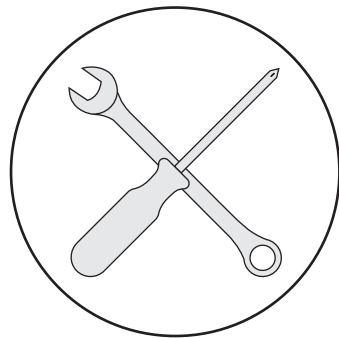
CLEANING & MAINTENANCE



Cleaning

Clean with warm soapy water and a smooth cloth. Avoid abrasive sponges or detergents as these will damage the finish.

To preserve the finish it is recommended to apply a stainless steel oil/mineral oil on a monthly basis.



Warranty Information


For full details about our warranty visit plumbline.co.nz/warranty-information

Cartridge Replacement

Before you start, turn off the water supply to the mixer.

1. Remove the handle
2. Unscrew the dome (hand tightened)
3. Unscrew the locking nut
4. Remove the cartridge

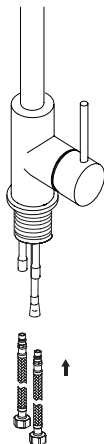
Re-assemble in reverse order

 Max tightening torque on locking nut: 10-12 Nm

INSTALLATION INSTRUCTIONS

progettø

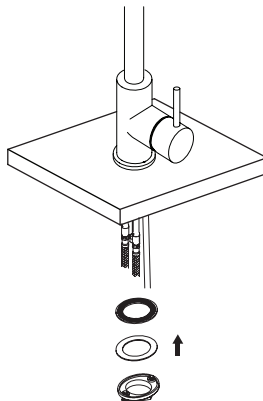
- 1 Insert the flexible hoses, remembering to hand-tighten only.



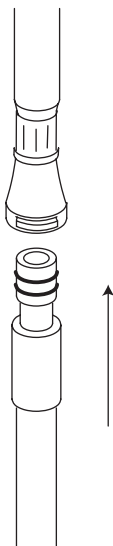
- 2 Slide on the rubber and steel washers, then tighten fixing nut while holding the mixer in the desired position, use the locking screws on the nut to carry out the final fastening.

This step may require two people.

 Do not over tighten the nut!



- 3 Connect up the pull-out hose spigot and ensure the plastic clip locks it into place.



- 4 Finally, connect up the water to the unit and test for performance.

