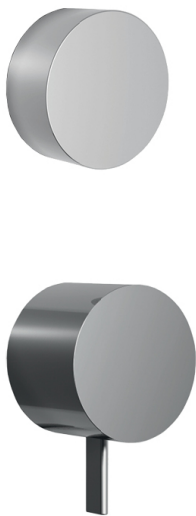
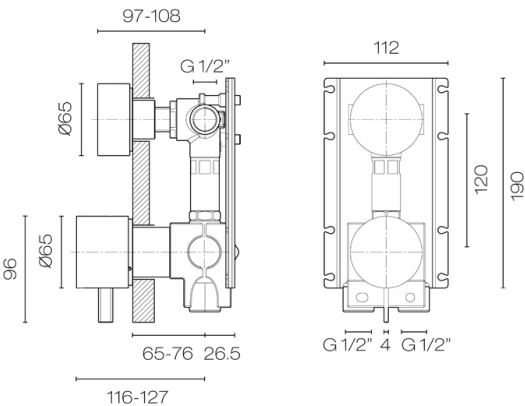


Fukasawa Shower Mixer With 2-Way Diverter

Code: A585BA



Brand	Fantini
Designer	Naoto Fukasawa
Origin	Italy
Installation	Wall mount
Backplate	Ø65mm
Warranty	20 Years
Cartridge	9000A570 (35A)
Approx Lead Time	4-8 weeks may apply for some finishes. Please enquire for accurate leadtime.
Notes	Suits mains pressure
Other Information	Can operate 2 shower outlets seperatly



Scan to View
Product Online



Fukasawa Shower Mixer With 2-Way Diverter

Code: A585BA

Building Product Information Requirements (BPIR)

Manufacturer	Plumblineline
Building Code Clauses	G12 (Water Supply) Performance Clause G12.2.1 / B2 (Durability) B2.3.1 (c)
Compliance Evidence	This product complies with the clauses B2.3.1 (c) and G12.2.1. The product has an in-service history of 6+ years and has industry-leading performance qualities. Compliance is as per verification method B2/VM1. The cartridge has ISO 9001 & ASNZS 4020: 2018 certification.
Condition of Use	For use in residential and commercial applications. Must be installed by a registered plumber or suitably qualified tradesperson and as per the installation instructions.
Version no.	1.0
Subject to a Warning	No

Scan to View
Product Online

