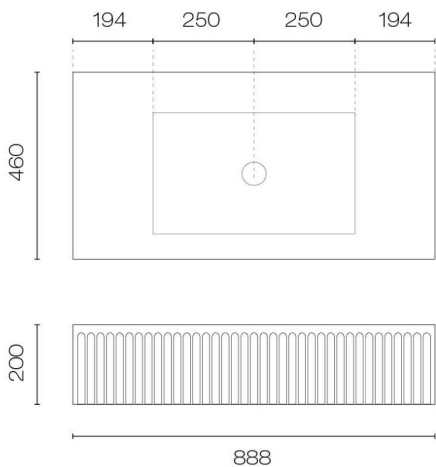
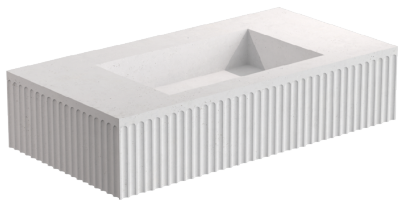


Doric 900 Wall Hung Centre Basin

Code: DO90C



Brand	Meek
Designer	Joshua Gullaci
Origin	Australia
Finish	Matt
Material	Concrete
Installation	Wall hung
Width (mm)	888
Depth (mm)	460
Height (mm)	200
Warranty	5 Years
Overflow	No
Waste Size	32mm
Waste Included	No
Glazed Back	Yes
Material	ECC Concrete
Approx Lead Time	8-12 week leadtime may apply. Please enquire for accurate stock availability and leadtimes.
Warranty Compliance	Solvents or liquids to remove/clean up silicon (especially around waste area) such as Fuelite cannot be used as it will break down the concrete sealer and void warranty.

Scan to View
Product Online



Doric 900 Wall Hung Centre Basin

Code: DO90C

Building Product Information Requirements (BPIR)

Manufacturer	Plumblineline
Building Code Clauses	B2 (Durability) B2.3.1 (c) / G13 (Foul Water) G13.3.1
Compliance Evidence	Clauses relating to this product are aimed at the installer. Please find comprehensive installation instructions on the product information page. The product is designed to enable the installer to comply with the building code. The product complies with the clause B2 (Durability) B2.3.1 (c)
Condition of Use	For use in residential and commercial applications. Must be installed by a registered plumber or suitably qualified tradesperson, and as per the installation instructions.
Version no.	1.0
Subject to a Warning	No

Scan to View
Product Online

