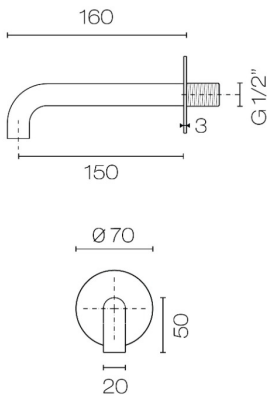


Oli 316 Wall Mount Spout 150mm

Code: OL095.15



Brand	Progetto
Designer	Plumblineline
Origin	Italy
Finish	Brushed
Material	Stainless Steel
Installation	Wall mount
Spout Reach (mm)	150
Backplate	√ø70mm
Water Inlet	Requires 1/2 Inch BSPF Wingback
Warranty	20 Years
Material	316 Grade Stainless Steel
Approx Lead Time	4-8 weeks may apply for some finishes. Please enquire for accurate leadtime.
Notes	Suitable for outdoors
Other Information	Lead-Free Tapware



Scan to View
Product Online



Oli 316 Wall Mount Spout 150mm

Code: OL095.15

Building Product Information Requirements (BPIR)

Manufacturer	Plumblineline
Building Code Clauses	G12 (Water Supply) Performance Clause G12.2.1 / B2 (Durability) B2.3.1 (c)
Compliance Evidence	This product complies with the clauses B2.3.1 (c) and G12.2.1. The product has an in-service history of 6+ years and has industry-leading performance qualities. Compliance is as per verification method B2/VM1. The cartridge has ISO 9001 & ASNZS 4020: 2018 certification.
Condition of Use	For use in residential and commercial applications. Must be installed by a registered plumber or suitably qualified tradesperson and as per the installation instructions.
Version no.	1.0
Subject to a Warning	No

Scan to View
Product Online

