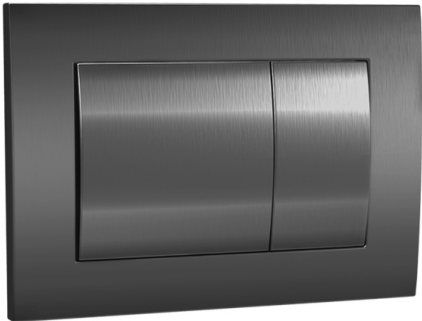
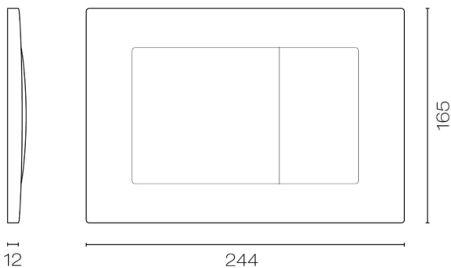


Metal Flush Panel Gunmetal

Code: CB100M.AI



Brand	Progetto
Finish	Gunmetal
Installation	Mounts directly onto cistern (not remote)
Width (mm)	245
Depth (mm)	10
Height (mm)	160
Warranty	1 Year
Material	Zamac Metal
Notes	Minimum wall lining thickness: 10mm. Dual flush(full/half flush). Mechanical actuation
Other Information	Provides access for servicing. Compatible with S10 Inwall Cisterns only



Scan to View
Product Online

