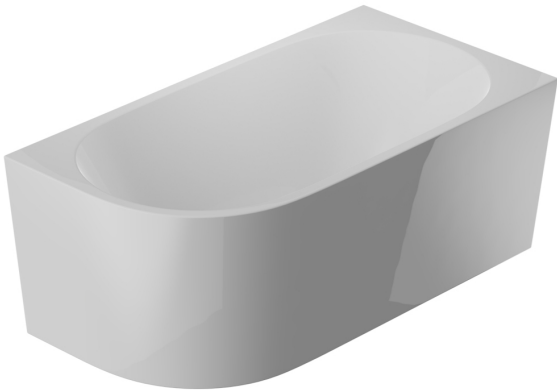


Tondo 1500 Right Corner Back To Wall Bath

Code: TON1500R

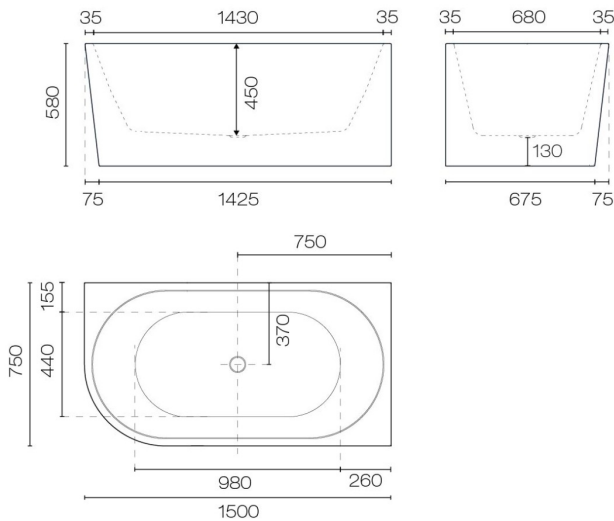


|                |                             |
|----------------|-----------------------------|
| Brand          | Progetto                    |
| Colour         | White                       |
| Finish         | Gloss                       |
| Material       | Acrylic                     |
| Installation   | Back To Wall / Freestanding |
| Width (mm)     | 1500                        |
| Depth (mm)     | 750                         |
| Height (mm)    | 580                         |
| Warranty       | 10 Years                    |
| Overflow       | No                          |
| Waste Size     | 40mm                        |
| Waste Included | Yes                         |
| Capacity       | 230L                        |
| Material       | Acrylic                     |

Other Information Made from Sanitary grade acrylic

**Note to the owner/user** This product is made from a durable & robust material that will give you years of use. However please note the following to avoid damage to your product:

- After each use thoroughly clean the surface with warm soapy water.
- Before applying cleaning products to the surface carefully read all instructions first.
- Do not use products that contain alcohol, bleach, solvents, bath oils/salts, hair dye, abrasives, acetone or citrus based chemicals.
- Do not allow water temperature to exceed above 55°C.



Scan to View  
Product Online



Tondo 1500 Right Corner Back To Wall Bath  
Code: TON1500R

Building Product Information Requirements (BPIR)

|                       |  |
|-----------------------|--|
| Manufacturer          | Plumblineline  |
| Building Code Clauses | B2 (Durability) B2.3.1 (c) / G13 (Foul Water) G13.3.1  |
| Compliance Evidence   | Clauses relating to this product are aimed at the installer. Please find comprehensive installation instructions on the product information page. The product is designed to enable the installer to comply with the building code. The product complies with the clause B2 (Durability) B2.3.1. |
| Condition of Use      | For use in residential and commercial applications. Must be installed by a registered plumber or suitably qualified tradesperson and as per the installation instructions.   |
| Version no.           | 1.0  |
| Subject to a Warning  | No   |

Scan to View  
Product Online

