

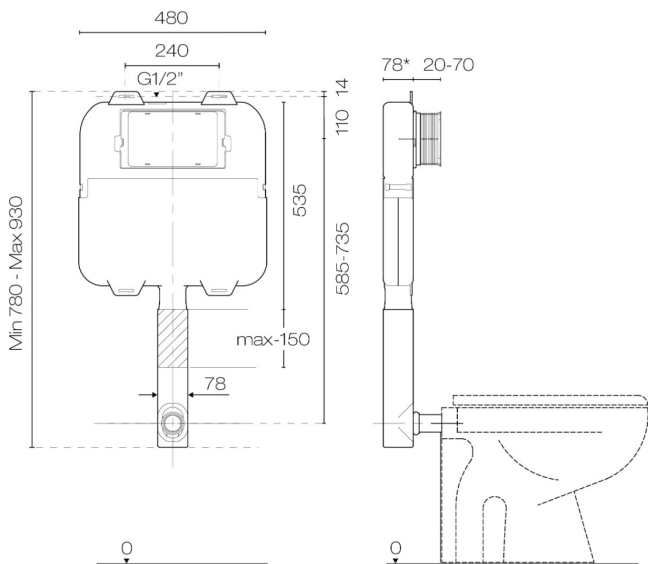
Progetto S20 Slim Inwall Cistern

Code: SPS200



Brand	Progetto
Installation	Concealed inside wall cavity directly behind toilet pan or mounted remote ie. in ceiling (up to 2.5M from flush button)
WELS Rating	4 Star
Width (mm)	480
Depth (mm)	78
Height (mm)	Min 780 - Max 930
Warranty	10 Years
Notes	Can be mounted in wall directly behind toilet pan or mounted remotely (when there is no room behind toilet pan for inwall cistern). Cistern can be mounted up to 2.5 metres from flush panel so could be mounted in a ceiling, cupboard or inwall.

**Other Information** Designed for floor mount or wall hung toilet pans (wall hung bracket required when used with wall hung pans). 4 Star WELS rating (4.5/3 litre dual flush) can be adjusted to 6/3 litre flush. Flush panel can be installed on front of cistern or remotely.



\*Min. recommended wall cavity thickness required : 90mm

Scan to View  
Product Online



Progetto S20 Slim Inwall Cistern

Code: SPS200

Building Product Information Requirements (BPIR)

Manufacturer	Plumblineline
Building Code Clauses	G12 (Water Supply) Performance Clause G12.4.1 / G1 (Personal Hygiene) Performance Clause G1.3.2 B2 (Durability) B2.3.1 (c)
Compliance Evidence	Clauses relating to this product are aimed at the installer. Please find comprehensive installation instructions on the product information page. The product is designed to enable the installer to comply with the building code. The product complies with the clause B2 (Durability) B2.3.1 (c).
Condition of Use	For use in residential and commercial applications. Must be installed by a registered plumber or suitably qualified tradesperson and as per the installation instructions.
Version no.	1.0
Subject to a Warning	No

Scan to View  
Product Online

