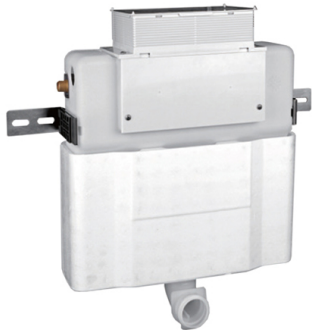
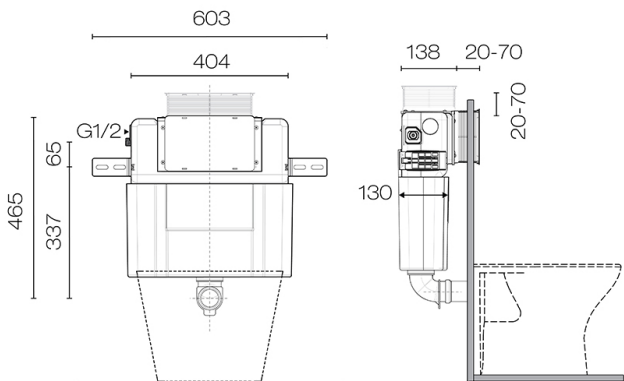


Progetto S30 Low Height Inwall Cistern

Code: SPL300



Brand	Progetto
Installation	Concealed inside wall cavity, directly behind toilet pan
WELS Rating	4 Star
Width (mm)	404
Depth (mm)	138
Height (mm)	465
Warranty	10 Years
Notes	Designed for floor mount toilet pans. 4 Star WELS rating (4.5/3 litre dual flush) can be adjusted to 6/3 litre flush. Mounts in wall directly behind toilet pan (cannot be remote mounted). Flush panel can be installed on top or front of cistern.
Other Information	Suits underbench vanity mounting or inside wall cavity. Wall cavity thickness required: 140mm. Minimum height from centre of flush pipe to top of cistern 465mm. Suits Como & Mod flush panels



Scan to View
Product Online



Progetto S30 Low Height Inwall Cistern

Code: SPL300

Building Product Information Requirements (BPIR)

Manufacturer	Plumblineline
Building Code Clauses	G12 (Water Supply) Performance Clause G12.4.1 / G1 (Personal Hygiene) Performance Clause G1.3.2 B2 (Durability) B2.3.1 (c)
Compliance Evidence	Clauses relating to this product are aimed at the installer. Please find comprehensive installation instructions on the product information page. The product is designed to enable the installer to comply with the building code. The product complies with the clause B2 (Durability) B2.3.1 (c).
Condition of Use	For use in residential and commercial applications. Must be installed by a registered plumber or suitably qualified tradesperson and as per the installation instructions.
Version no.	1.0
Subject to a Warning	No

Scan to View
Product Online

