



Plumbline

**Commercial
Projects**

PORTFOLIO

Commercial Project Partnerships

Plumbline values the opportunity to be a partner in many of the most prestigious property developments in New Zealand and the Pacific Islands. We are pleased to present an overview of some of the hotels, retirement villages, resorts, apartments, penthouses and lodges where we have been able to contribute our expertise.



CASE STUDY

QT Hotel Queenstown

Hotel

The QT Hotel development team partnered with Plumblin to supply bespoke bathroom products including black and chrome combination tapware, luxurious 1800 baths and custom-made vanities.

Specifications

Customised Chap Tapware
in Black/Chrome

Tube Shower Tapware

Evo Freestanding Baths

Metro Accessories

Sfera Inset Basins

Custom Vanity Units



CASE STUDY

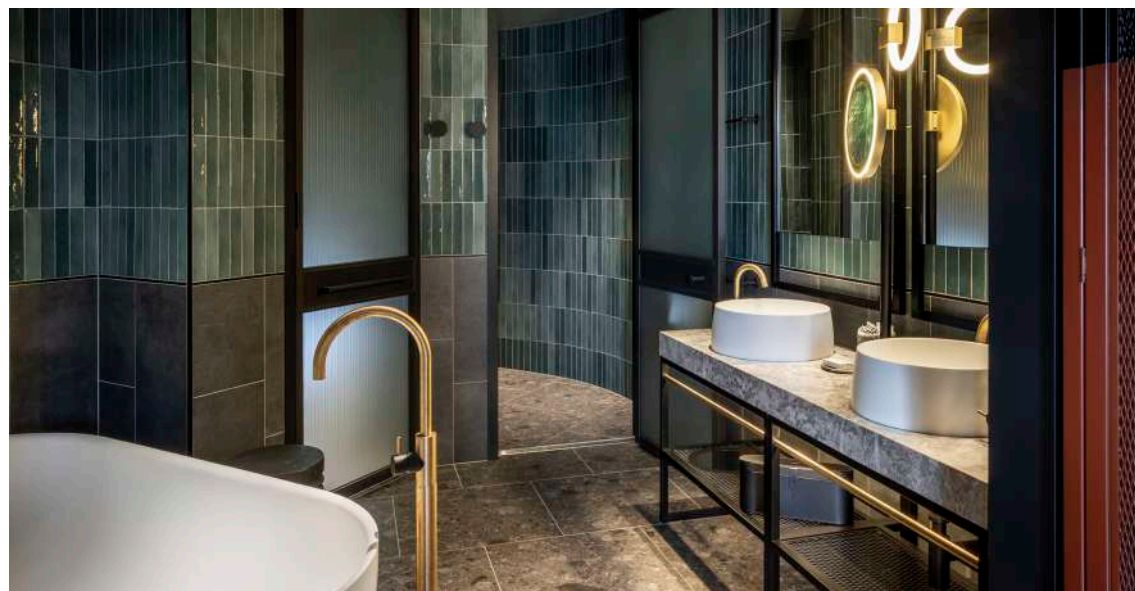
QT Hotel Auckland

Hotel

Plumblineline was thrilled to have the opportunity to continue its partnership with the QT Hotel brand and to be chosen to supply the QT Hotel in Auckland. We collaborated closely with the hotel's architects and designers to provide tailored products that met their specific design needs. This included black and brass combination tapware.

Specifications

Customised Buddy Tapware in Black/Brass
Niagara Belle Freestanding Baths
Cirque Vessel Basins
Evo Undermount Basins



CASE STUDY

Naumi Hotel Auckland Airport

Hotel

In 2016, the Naumi Hotel was in search of brass basin mixers and reached out to various suppliers for assistance. Plumbl ine was able to supply the desired brass mixers after working closely with our manufacturer. This successful project inspired Plumbl ine to develop a coloured tapware collection, Buddy, which has become a signature Plumbl ine product

Specifications

Buddy and Swiss Tapware & Accessories

Evo Freestanding Bath Customised with Overflow

Evo Undermount Basin

Niagara Egg Vessel Basin & Bath



CASE STUDY

The Intrepid Hotel Wellington

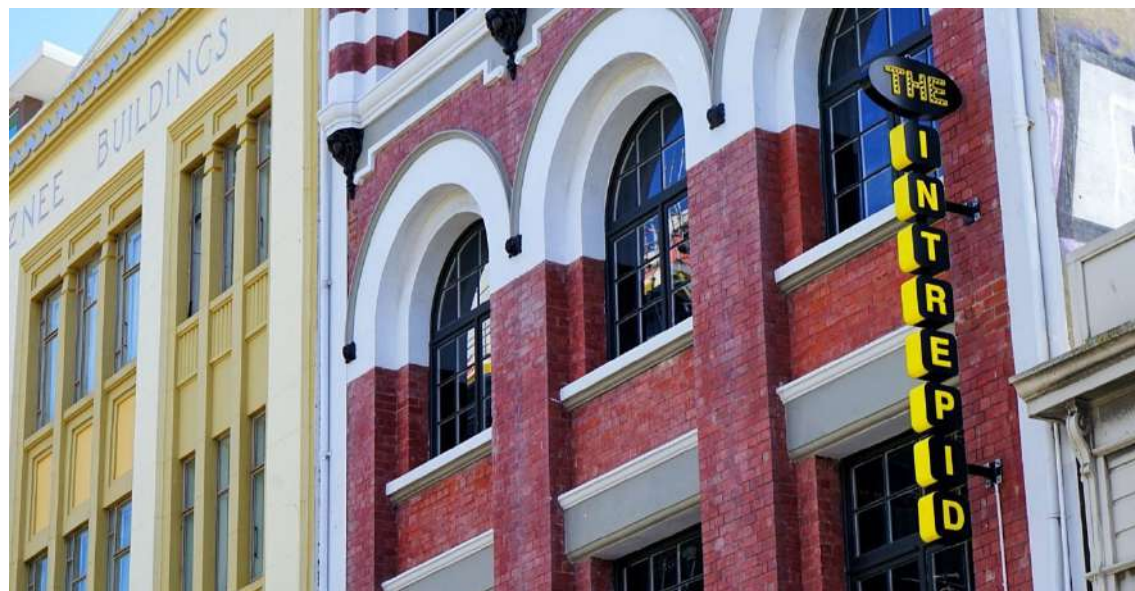
Hotel

Plumblineline was initially contracted to only supply basins for the Intrepid Hotel but when the tapware supplier was unable to supply in time, Plumblineline stepped in and provided the specified tapware which enabled the project to be completed on time.

Specifications

Buddy Tapware

Vessel Basins



CASE STUDY

Sudima Hotel Queenstown 5 Mile

Hotel

The architect for the 4.5 star Sudima Hotel specified a need for longevity and reliability in product choices. Plumblineline was selected to supply the bathroom fixtures including Swiss stainless steel tapware known for its durability and performance.

Specifications

Swiss Tapware

Super-Thin Ellipse Vessel

Basins Evo 70 Toilets



CASE STUDY

Crown Plaza Christchurch

Hotel

This project was awarded by the reputable building company, Lanyon & Le Compt Builders. Plumblineline supplied the basins and toilets for all 204 suites.

Specifications

Mia Vanity Tops

Compact Back to Wall Toilets



CASE STUDY

Hilton Hotel Papua New Guinea

Hotel

Working with the Furnz Group, Plumbline was able to supply full spec, luxury bathrooms for the Papua New Guinea Hilton. As an off-shore project, Plumbline managed the shipping of all bathroom products for the hotel including baths, basins, vanities and tapware.

Specifications

Buddy Tapware in Brushed Brass

Buddy Accessories in Brushed Brass

Evo Vessel Basins

Niagara Round Vessel Basins

Niagara Egg Baths

Organic Hand Forged Copper Basins

Lunar Round LED Mirrors



CASE STUDY

Park Hyatt Auckland

Hotel

The architects specified luxury Apaiser baths for the penthouse suites in the Park Hyatt, Auckland. Plumblíne was able to source and deliver the baths and complete the bathroom with Buddy tapware and accessories.

Specifications

Apaiser Haven Baths

Buddy Tapware & Accessories



CASE STUDY

Novotel Auckland Airport

Hotel

The architect for this project specified a very particular design of basin, a semi recessed basin with no tap hole. Our directors were in Italy at the time and were able to work with our Italian suppliers to meet the architect's brief.

Specifications

Metro Tapware

Tube Shower Columns

Progetto Basins



CASE STUDY

Christchurch Airport

Airport Facilities

Working with Redesign Group in Christchurch, Plumblineline was able to supply the highly durable and hygienic toilets and basins that were required, from our Italian supplier, Catalano. Widely regarded as the best ceramic manufacturers in the world, Catalano's wide and shallow basin design was the perfect shape for this project.

Specifications

Catalano Premium Basins

Catalano Sfera Toilets



CASE STUDY

Falcon Brae Villa Nelson

Luxury Lodge

JTB Architects (Jerrom Tocker Barron) came to us looking for one supplier who could supply a full bathroom of luxury products. Additional to fitting the entire bathroom, we created a deck mounted bath mixer in brass specifically for the project. It has subsequently been added to our Buddy range.

Specifications

Buddy Tapware

Catalano Undermount Basins

Coastline Outdoor Tapware

Starlight LED Mirrors

Evo Back to Wall Toilets



CASE STUDY

The Britten Stables Christchurch

Luxury Accommodation

Oakleys Plumbling Supplies partnered with us to supply this high end project. Plumblineline had the right style of product to suit the age and quality of the build. We have remained suppliers to the family on other high-spec projects.

Specifications

Buddy Tapware in Brushed Brass

Buddy Accessories

Sfera Rimless Floor Mount Toilets

Starlight Round LED Mirrors

Minerva Made to Measure Basins



CASE STUDY

The Oyster Inn Waiheke

Hospitality and Accommodation

With an extensive bathroomware collection, Plumblineline was able to offer products that suited the style and character of this beachside inn and bistro. The designers were after butler sinks and traditional tapware which Plumblineline was able to supply.

Specifications

Nicolazzi Tapware in Chrome
Shaws Butler Sinks



CASE STUDY

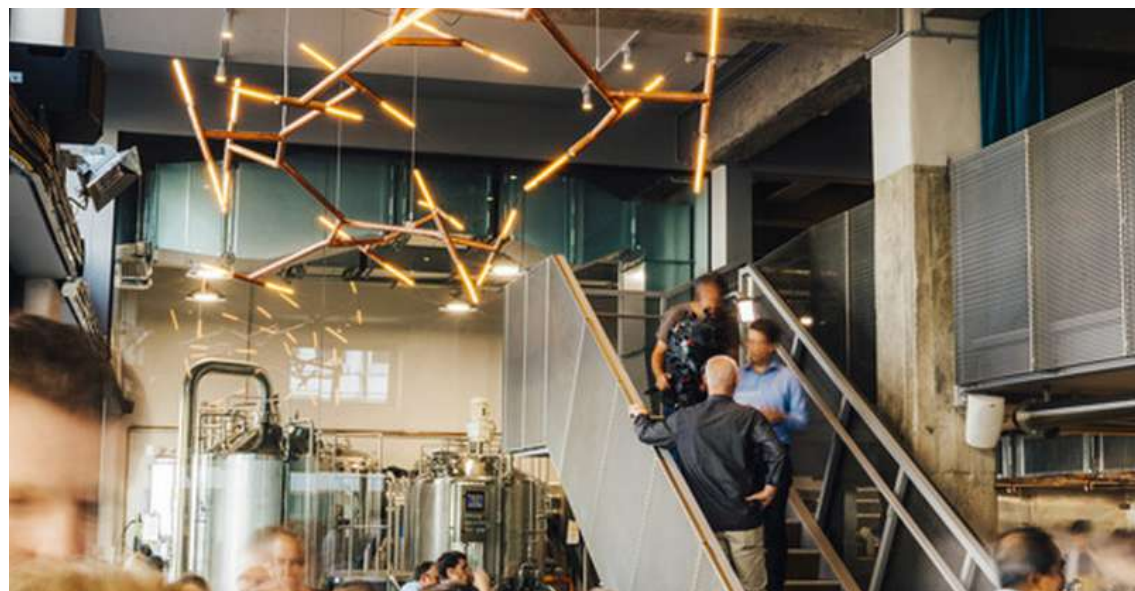
Whistling Sisters Wellington

Hospitality

Architecture HDT approached Plumblin for a tailor-made solution for their basin requirements. Our Solid Surface 'Made-to-Measure' basin service proved to be the ideal solution as it allowed the creation of a basin which fits perfectly between two walls, while also providing a modern and durable material that could withstand heavy use.

Specifications

Minerva Made to Measure Basins
Buddy Tapware



CASE STUDY

Kombi Apartments Tauranga

Apartments

The developers of this apartment complex sought a cost-effective solution for small spaces. Plumblineline's range of Compact toilets and Mia Slim vanities proved to be an ideal fit for the project. We were able to furnish every apartment with these products.

Specifications

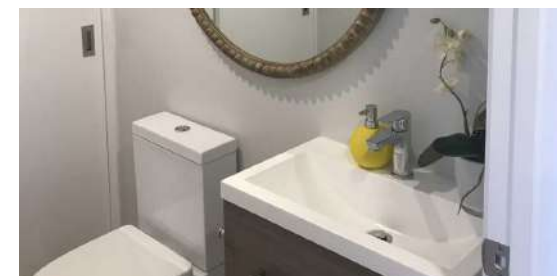
Compact Back Wall Toilet Suite

Eco Style Tapware

Mia Slim Vanities

Minimo Slide Showers

Quadro Heated Towel Ladder



CASE STUDY

Latitude Apartments Tauranga

Apartments

Plumblineline was pleased to be part of the revitalisation of the Tauranga waterfront and at the time, Latitude was one of the only apartment blocks in Tauranga. The apartments were developed for residents looking for luxury and Plumblineline was able to offer a full bathroom fit-out including bespoke 1500 vanities.

Specifications

Reflex Vanities

Swiss Tapware & Accessories

Mia Mirror Cabinets

Evo Toilets

Kube Basins

Tondo Freestanding Baths

Tondo Heated Towel Rail



CASE STUDY

Sunset West Apartments Wellington

Apartments

In collaboration with developer Nightingale Group Wellington, Plumblineline successfully fitted out the bathrooms of a 64-unit apartment block. This development has become a noteworthy addition to the Wellington skyline.

Specifications

Evo 45 Basins

Evo Back to Wall Toilets



CASE STUDY

The Paddington Terraces Wellington

Terraced Houses

The Paddington was inspired by the terrace houses in Paddington, Sydney. The project was developed by Thames Pacific Developer and designed by A+ Design Group. Plumblineline worked closely with the development team to supply all bathroom fittings for the 152 houses in the project.

Specifications

Minimo Tapware

Tube Tapware

Evo Baths



CASE STUDY

Arvida Bethlehem Shores

Retirement Village

Arvida, a developer known for offering luxurious and masterfully designed villas, sought custom-made vanities for their Bethlehem Shores development. They partnered with Plumblineline, recognizing that our off-the-shelf products met not only their design and cost requirements but also their tight project timeline. As a result, Plumblineline was also commissioned to execute the complete bathroom fit-out for all villas, including 2-3 bathrooms per unit.

Specifications

Forma Vanities

Super-thin Ellipse Vessel Basins

Como Tapware & Accessories

Galaxy 1200 Mirrors



CASE STUDY

Epic Homes

Group Home Builders

Plumblin partners with Wellington builder Rodney Harkness to provide high-quality bathroom products for all of their home builds. Our competitive pricing and consistent product offerings make us a reliable choice for all types of housing projects.

Specifications

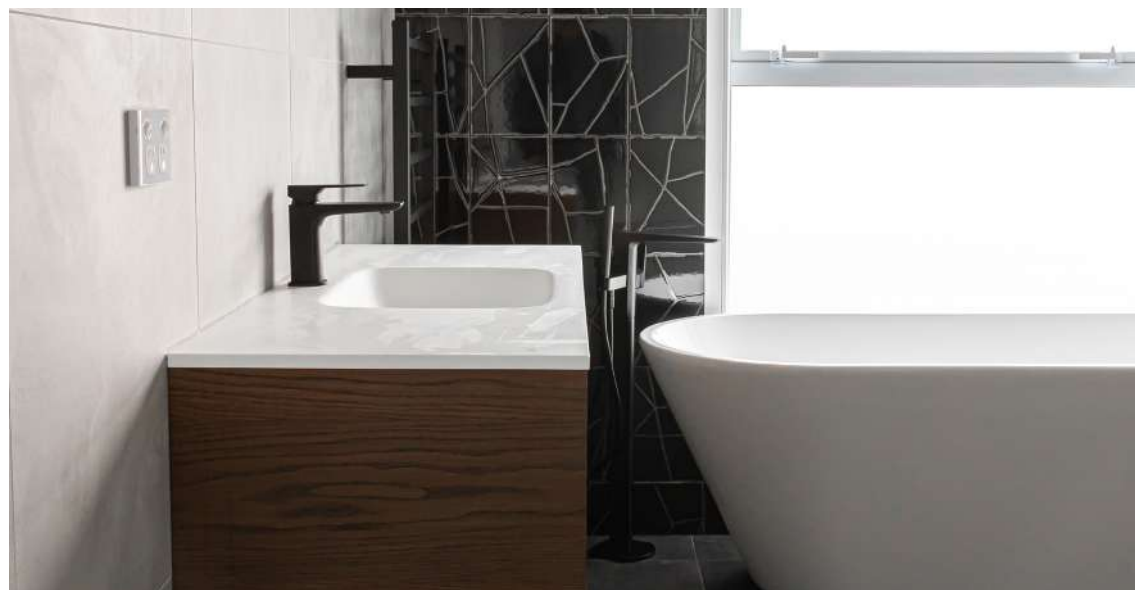
Como Tapware in Matt Black

Buddy Kitchen Mixer

Evo Bath

Stanza Spio Vanities

Zen Toilets



OUR COMPANY

Delivering an unparalleled range of contemporary and traditional bathroom products.

Family Owned & Operated

Established in 1990 by Wellington plumber Geoff Wallace, Plumblineline continues to be owned and operated by the Wallace family. Strong family values and a commitment to delivering on promises has earned the company a reputation for reliability and integrity.

Exceptional Products

Plumblineline offers an extensive range of high-quality bathroomware, both locally designed and exclusively imported. The products are known for their exceptional quality, functionality and design. We also offer the option of bespoke products that are custom-made to fit your specific project needs

Customised Service

Whether it's a minor update or a major construction project, Plumblineline has the resources and expertise to deliver exceptional results. We have a team of experts ready to assist with product selection and sourcing, design advice, bespoke creations and concept renders. We also have the capability to arrange delivery anywhere in the region.

Warranties & Support

Plumblineline provides full warranties and support for all products we sell. We take a pragmatic approach to resolving any issues that may arise and aim to provide solutions that keep customers satisfied. We take pride in offering the best customer service possible.

Our Showrooms



Left: Auckland Showroom
Right: Wellington Showroom

Our showrooms located in Auckland and Wellington are designed to inspire and guide anyone planning a bathroom development.

They feature in-situ bathroom settings, a working shower section and product samples designed to simplify the selection process.



Our showroom teams have extensive product and installation knowledge and are passionate about design. They are available to guide professionals through the entire product selection process.

OUR HEADQUARTERS

Distribution Centre and Head Office



Our Warehouse
Wellington

A significant investment was made in the design and construction of the state-of-the-art, purpose-built Plumblineline headquarters based in Wellington. Completed in 2017, the office and distribution facilities are contemporary, efficient and designed to accommodate future growth.

The 5000m2 building houses modern office facilities, an in-house café, warehousing/distribution centre, and a world-class showroom.



Accommodating the intensity of the in-and-out flow of goods, the highly organised warehouse contains customised racking with over 4000 pallet spaces and bulk store areas to store & allocate large project lots.

Plumblíne

WWW.PLUMBLINE.CO.NZ